

# OMNI<sup>®</sup>



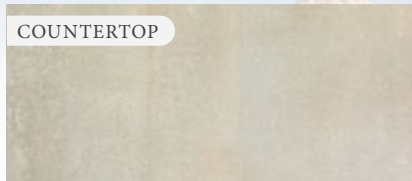
GRAY MOUNTAIN



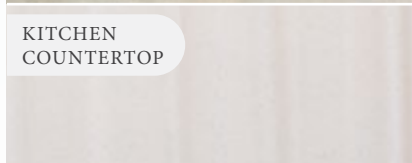
MADERA CANYON



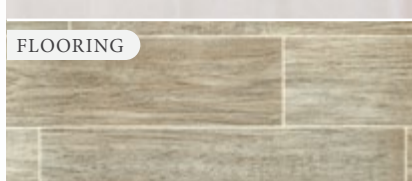
SAHARA SLATE



COUNTERTOP



KITCHEN  
COUNTERTOP



FLOORING



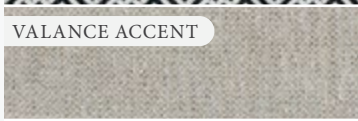
REGATTA



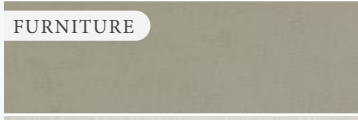
SANIBEL



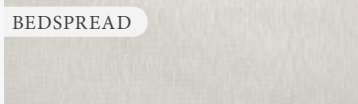
VALANCE & PILLOWS



VALANCE ACCENT

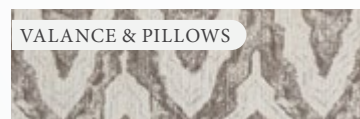


FURNITURE

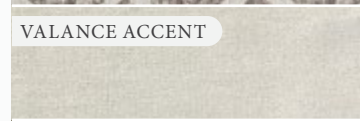


BEDSPREAD

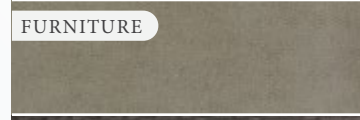
BLACK DIAMOND II



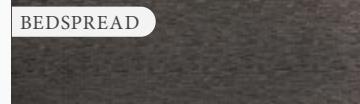
VALANCE & PILLOWS



VALANCE ACCENT



FURNITURE

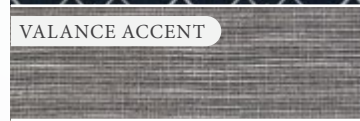


BEDSPREAD

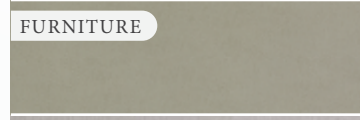
STARGAZER II



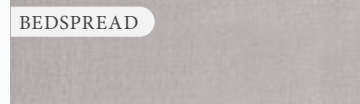
VALANCE & PILLOWS



VALANCE ACCENT

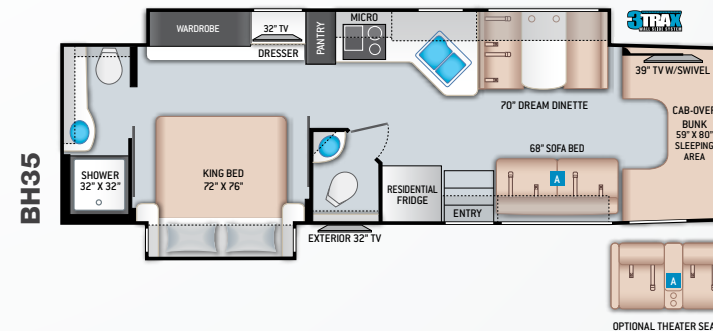
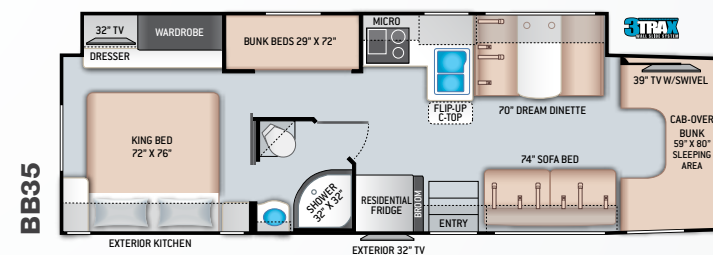
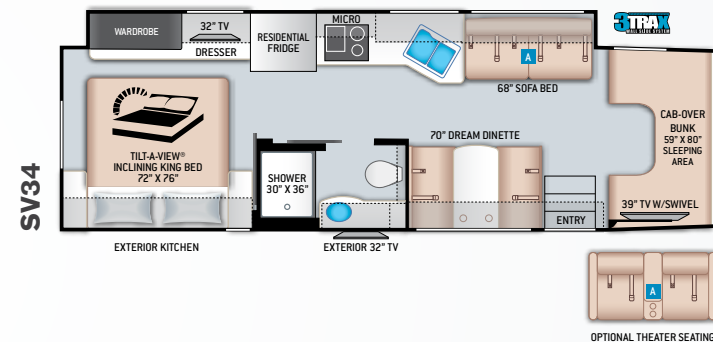
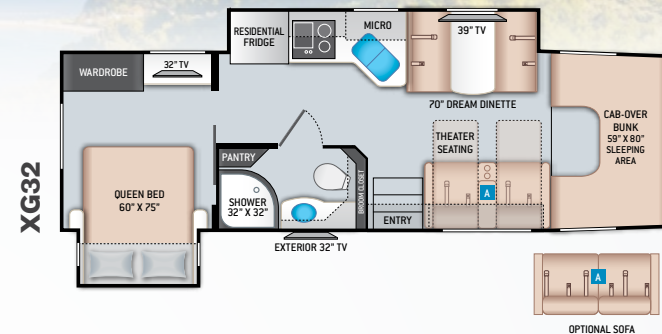


FURNITURE



BEDSPREAD

WATERFALL II



# Featured Highlights

## CONSTRUCTION & EXTERIOR

- Ford® Chassis - F550 - Power Stroke™ 4 X 2 Turbo Diesel / 6.7L Power Stroke V8 / 330HP 825 lb-ft Torque (BB35 & BH35)
- Ford® Chassis - F550 - Power Stroke™ 4 X 4 Turbo Diesel / 6.7L Power Stroke V8 / 330HP 825 lb-ft Torque (XG32 & SV34)
- Welded Tubular Steel Floor
- Welded Tubular Aluminum Roof & Sidewall Cage Construction
- Premium One-Piece TPO Roof
- Full-Body Paint Package with Gel Coated Sidewalls
- Invisible Front Paint Protection
- Automatic Leveling Jacks with Touchpad Controls
- Rotocast Storage Compartments
- Flush Mount Radius Luggage Doors
- Power Patio Awning with Integrated LED Lighting
- Powered Sky View Shade in Cab Overhead
- Slideout Room Awnings
- Roof Ladder
- Patio Light
- Electric Entry Step
- Automatic Courtesy Lights Over Cab Entry
- Frameless Windows
- 10,000-lb. Trailer Hitch with 7-pin Round Connector

## AUTOMOTIVE & COCKPIT

- Touchscreen Dash Radio with SYNC® 3, Navigation, 911 Assist, AppLink and Smart-Charging USB ports
- Heated/Remote Exterior Mirrors
- Rearview Mirror with Back-up Monitor

- Side View Camera System
- Emergency Engine Start Switch
- Adjustable Power Driver & Manual Passenger Captain's Chairs with Center Armrests
- Adjustable Accelerator & Brake Pedals
- Power Windows & Door Locks
- Audible Lane Departure Warning & Pre-Collision Assist with Automatic Emergency Braking (AEB) and Forward Collision Warning (XG32 & SV34)
- Cruise Control
- Tilt Steering Wheel
- Map Light
- Keyless Entry System
- All Weather Cab Floor Mats
- Privacy Curtain
- Fiberglass Running Boards
- Valve Stem Extenders
- Aluminum Wheels

## INTERIOR

- Rubber Tread Entry Steps with Lighted Step Well & Entry Grab Handle
- Residential Vinyl Flooring Throughout
- 84" Interior Ceiling Height
- Soft Touch Vinyl Ceiling
- LED Lighting
- Ceiling Ducted Air Conditioning System
- Hardwood Veneer Paneling in Select Areas
- Satin Finish Cabinetry with Solid Wood Flat Panel Cabinet Doors & Nickel Finish Hardware
- Window Solar & Privacy Roller Shades in Living Room
- Power Sky View Shade in Cab Overhead

- Leatherette Dream Dinette® Booth with Cup Holders
- Pressed Laminated Countertops in Select Areas
- Leatherette Theater Seating with Incliners & Footrests (XG32)
- Leatherette Sleeper Sofa (SV34, BB35 & BH35)

## INTERIOR OPTION

- Leatherette Sleeper Sofa (XG32)
- Leatherette Theater Seating with Incliners & Footrests (SV34 & BH35)
- Single Child Safety Tether in Dinette

## KITCHEN

- Stainless Steel Residential Refrigerator with Ice Maker
- 2-Burner High-Output Gas Range with Single Induction Cooktop
- Stainless Steel 30" Over-the-Range Convection Microwave Oven
- Solid Surface Countertops & Sink Covers
- Decorative Tile Backsplash
- Stainless Steel Double Bowl Sink with Single Handle Faucet & Pull-Down Sprayer
- Pop-Up Countertop Outlet
- Pantry (XG32 & BH35)
- Waste Basket
- 12-volt High Capacity Power Vent with Cover

## BEDROOM & BATHROOM

- King Size Bed (SV34, BB35 & BH35)
- Queen Size Bed (XG32)
- Tilt-A-View® Inclining Bed Mechanism (SV34)
- Headboard, Bedsread & Pillow Shams

- Bedroom 110-volt Outlet on Inverter for CPAP Machine
- Window Privacy Shades in Bedroom
- Bunk Beds in Hallway Slideout (BB35)
- Shower with Obscure Glass Door
- Stainless Steel Bathroom Sink
- Foot Flush Porcelain Toilet
- Power Bath Vent

## ENTERTAINMENT

- 39" TV on Manual Swivel in Cab-Over (SV34, BB35, & BH35)
- 39" LED TV in Living Area (XG32)
- 32" TV in Bedroom
- TV Prep in Bunk Beds (BB35)
- Exterior 32" TV on Manual Swivel with Sound Bar
- Bluetooth® Coach Radio System in Bedroom
- Cable TV Ready
- Digital TV Antenna
- Winegard® Connect™ WiFi Extender +4G
- USB Charging Ports - Bedroom & Living Area
- Exterior Kitchen with 2.5 cu. ft. Refrigerator & Sink (SV34, & BB35)

## ELECTRICAL & PLUMBING

- Onan® RV QD 6000 Diesel Generator
- Automatic Generator Start
- 50-amp Detachable Shoreline Power Cord
- Automatic Shoreline-to-Generator Transfer Switch
- 1800-watt Inverter
- Dual 13,500 BTU Roof Air Conditioners
- Dual Auxiliary House Batteries with Battery

- Tray - Holds up to Four (4) Batteries
- Battery Disconnect Switch
- 100-watt Solar Charging System with Power Controller
- Rapid Camp+® Multiplex Wiring Control System with 7" Touchscreen
- Whole Coach Water Filtration System
- Tankless Water Heater
- Water Heater Bypass System
- Enclosed Holding Tanks with Heat Pads (BH35 S Rear Tank) (SV34, XG32 & BH35)
- Enclosed & Heated Holding Tanks (XG32)
- Black Tank Flush System
- 360° Siphon® RV Holding Tank Vent Cap
- Exterior LP Connection
- Outside Shower
- Systems Control Center

For a complete listing of available features visit [thormotorcoach.com/omni](http://thormotorcoach.com/omni).



	XG32	SV34	BB35	BH35
Chassis	Ford	Ford	Ford	Ford
Gross Vehicle (GVWR)	19,500	19,500	19,500	19,500
Gross Combined (GCWR)	40,000	40,000	40,000	40,000
Wheel Base	227"	248"	248"	258"
Exterior Length (w/o ladder)	33'-6"	35'-6"	36'-8"	36'-10"
Exterior Height (w/iAC)	12'-6"	12'-6"	12'-6"	12'-6"
Exterior Width (w/o mirrors)	99"	99"	99"	99"
Interior Height (living area)	84"	84"	84"	84"
Awning Size	14'	20'	20'	14'
Fuel (gal)	28F / 40R	28F / 40R	28F / 40R	28F / 40R
LPG (lbs)	68.2	68.2	68.2	68.2
Fresh/Waste/Gray Water (gal)	75 / 40 / 47	65 / 40 / 40	75 / 40 / 40	75 / 40 / 40F - 31R
Water Heater (gal)	Tankless	Tankless	Tankless	Tankless
Furnace (BTUs)	30,000	30,000	30,000	30,000
Exterior Storage Capacity (cu. ft.)	78	78	93	116
Hitch Weight Rating (lbs)	10,000	10,000	10,000	10,000



Made to fit.

IMPORTANT—PLEASE READ: This brochure reflects product design, fabrication, material, components and specifications at the date of printing, which date is disclosed below. Please visit us online at [ThorMotorCoach.com](http://ThorMotorCoach.com) or consult with your selling dealership for the latest in standards, options, specification and technical information. Photographs in the brochure may depict optional equipment or may only be available in certain floor plans. Components, appliances and the chassis may have been manufactured in a calendar year before the vehicle's designated model year. All capacities are approximate. The actual length of the vehicle may differ from that indicated in the brochure due to variances in the manufacturing processes and/or installed components. All dry weights are based on standard model features and do not include optional features or equipment. Component part and appliance manufacturers issue limited warranties covering portions of the vehicle not covered under the limited warranty we issue. Copyright Thor Motor Coach, Inc. © MY 06/04/2020

P.O. Box 1486, Elkhart, IN 46515 Sales Department: 800.860.5658

[thormotorcoach.com/omni](http://thormotorcoach.com/omni)

