

SUNCRUISER



2 0 0 1



Suncruiser



35U AMETHYST FROST

The Itasca® SunCruiser®, the most researched product we've ever built, has been further updated for 2001. These refinements, based on extensive customer input and research, bring SunCruiser to all-new levels of home-like environment and convenience.

The SunCruiser is extremely user-friendly because it was built to be like a home. For instance, the **TRUEAIR** residential air conditioning system uses ceiling ducts and residential style filters to distribute better quality air evenly and efficiently throughout the coach. And because it is located in the basement, not the roof, TrueAir produces less noise and is easier to access. User-friendly features like the Flexsteel® sofa/sleeper in the 32V, the residential-height toilet and the built-in hairdryer in the bathroom are also results of this revolutionary approach. Even down to the details, like moving the light switches from the ceiling fixtures to the walls, we tried to make your SunCruiser experience as convenient as possible. The result? A coach that makes you feel right at home.

User-Friendly

We've done our homework.



37C SUMMER STRAW

There's nothing standard about the standard features in the new SunCruiser. The front slideout room on all four models incorporates Winnebago Industries' revolutionary **STOREMORE**® Hydraulic Slideout System. This system greatly increases accessibility to stored items by allowing interior and exterior storage compartments to extend with the slideroom. Other standard amenities include a 25" color TV, chrome and brass light fixtures, and dual-glazed, thermo-insulated windows. All Flexsteel furniture is available in UltraLeather HP™ covering, including driver and passenger seats. Other popular additions include an available six-way power assist driver's seat and an available deluxe stereo sound system.



The available workstation can be used for anything from writing letters to family and friends, to performing everyday business functions on your laptop. It tucks neatly out of the way when not in use.



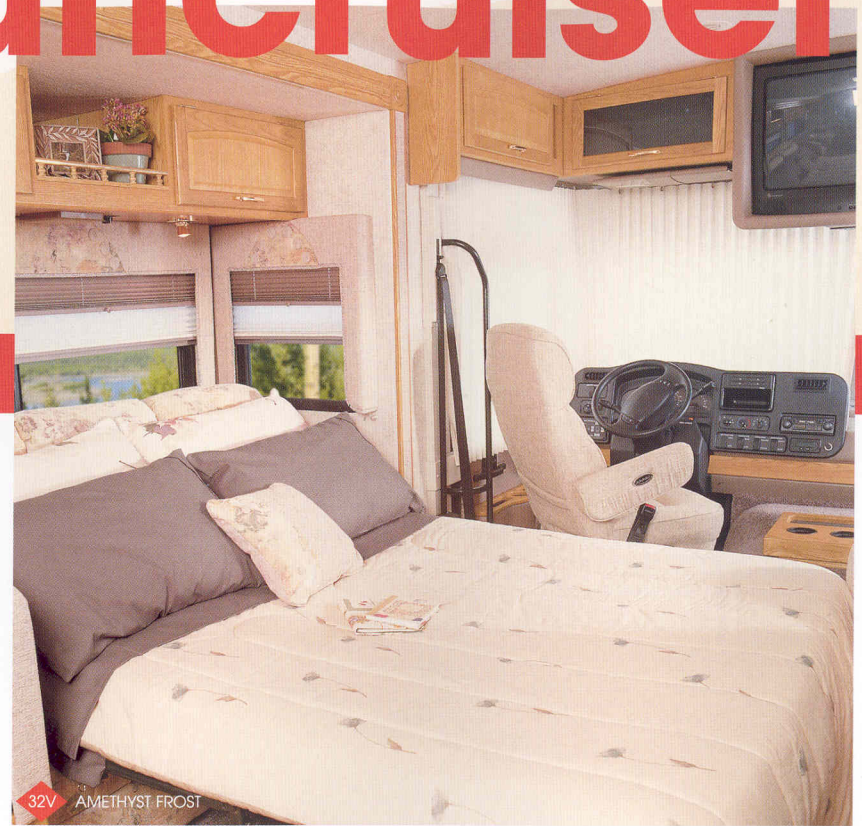
The dash area features a rearview monitor, large easy-to-use control knobs, antenna/satellite dish indicator light, and conveniently mounted touch pad leveling jack controls. In addition, there is an electronic compass/temperature gauge and an AM/FM cassette radio or an available CD radio.

Suncruiser



35U

The galley's list of amenities includes a single-control faucet with pull-out sprayer, solid surface countertops, 30" residential microwave, double-door refrigerator with wood raised panel inserts, sealed burner Magic Chef® range, fluorescent light under overhead cabinet, ventilator fan, water purifier, mirror, spice rack, and a built-in coffeemaker located under the dinette overhead cabinet.



32V AMETHYST FROST

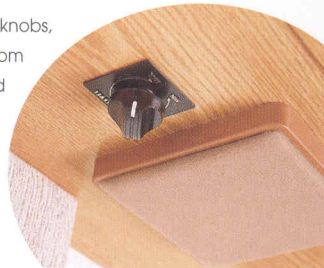
The 32V's comfortable sofa quickly transforms into a 52" x 71" bed for added sleeping space. In keeping with Itasca's long-standing reputation for offering upgrade items, the furniture throughout the coach is custom-built by Flexsteel.



35U

Our roomy pantry with adjustable shelves is the perfect complement to the well-equipped galley.

Volume control knobs, located on the bottom of the overhead cabinets, allow easy control of individual speaker volume for the standard sound system.



Another user-friendly touch is the available flashlight/vacuum cleaner accessory package. Both items are stored on the charger so they're always ready when you need them.



35U AMETHYST FROST

The Sun Cruiser's bedroom includes a large wardrobe (lined with cedar on both ends) with enough capacity to hold clothes for any type of weather you might encounter. A 12 volt DC receptacle and built-in alarm clock are also included.



35U AMETHYST FROST

This handy desk/vanity area with folding chair, and the added storage space you'll find in the roomy bedroom, are made possible by the rear slideout on the 35U.



37G

The 37G's bathroom is designed to provide the finest features without compromise. Highlights include a shower/tub with a textured glass door, a residential-height toilet and a built-in hair dryer with nightlight.



The conveniences of home, such as the available washer/dryer, are a part of what makes the Sun Cruiser one of our most user-friendly motor homes.



Sun Cruiser's more home-like atmosphere extends to items like the drawers and doors, where you'll find large 4" handles and heavy-duty drawer guides with a positive locking feature.



Another Winnebago Industries exclusive feature is the **ONEPLACE** systems center. This innovative display incorporates commonly used monitor panels, switches and controls into one central location for your convenience.



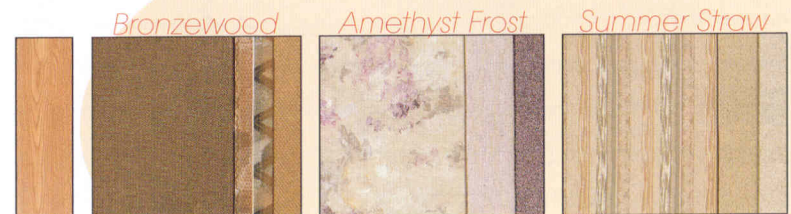
The Sun Cruiser is satellite system ready. A dash mounted indicator light reminds the driver to lower the satellite dish and TV antenna before moving the coach.



Sun Cruiser offers a number of entertainment options. Choose from the standard 25" color TV, or select the available deluxe sound system, which includes a 25" stereo TV and stereo VCR with premium speakers. The bedroom includes a 13" color TV on the 32V and 35B and a 19" color TV on the 35U and 37G.

SUNCRUISER DECOR OPTIONS

To assure their strength and durability, fabrics selected for use in the Sun Cruiser must pass a series of rigorous tests. Just one example is the "double rub" test, where a machine mechanically simulates a person getting in and out of a seat up to 30,000 times. (This equates to nearly four times a day for over 20 years!)



Portsmouth Oak Woodgrain

Suncruiser



What sets a Winnebago Industries motor home apart? You've already seen that we offer more on the inside. But our advantages are much more than simply increased interior comfort. From our smooth, one-piece fiberglass Thermo-Panel® exterior (which you can see), to the welded steel **SUPER** STRUCTURE our motor homes are built on (which you can't see), and from the fit and finish of our storage compartments (which you can see), to the one-of-a-kind joints that secure our walls to the floor and ceiling (which you can't see), our motor homes are simply built to a higher standard. A standard we've been improving on for more than forty years.

Suncruiser's exterior has been designed to be both stylish and functional. The high-gloss Thermo-Panel sidewalls are handsomely accented with your choice of either Wintergreen Metallic or Sahara Metallic paint. The dual-glazed, thermo-insulated tinted windows look classy while reducing exterior noise and light transmittal for comfortable living in a variety of climates. The efficient furnace is positioned in the rear basement area and with the KeyOne® system, which allows you to open most doors and compartments with a single key, access to this and any of SunCruiser's many other features has never been easier.



ITASCA'S fiberglass roof



COMPETITOR'S rubber roof

Unlike the rubber roofs found on most other comparably priced motor homes, which suffer from chalking, tearing, discoloration and deterioration, Suncruiser's one-piece fiberglass roof offers much more strength and durability. Built with our proven Thermo-Panel construction, it features a crowned exterior that easily sheds water. We're so confident of our roof's integrity, we back it with a 10-year limited parts and labor warranty, one of the longest in the industry.



TASCA

35U

Interior and exterior storage compartments of the Suncruiser extend with the slideroom, thanks to the **STOREMORE** Hydraulic Slideout System. All models also feature heated compartments with fully hinged and insulated belt-line storage doors, single-handle latches and gas struts for easy one-handed opening. To aid you in loading and unloading, lights are located within the StoreMore storage compartments.



35U

Electric steps and the large interior and exterior assist handles at the main entrance door make getting into and out of your Suncruiser easy. For added convenience, the auxiliary battery disconnect switch is placed near the door.



The improved exterior mirrors are exclusive to Winnebago Industries. The mirror's flat glass area is larger than last year's design, and the convex area has nearly doubled in size, offering a much better view of the road.

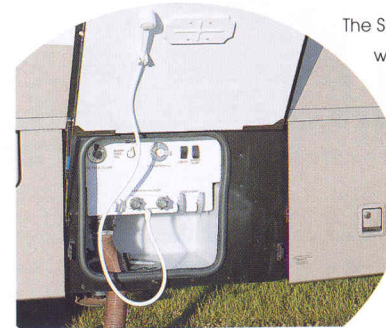
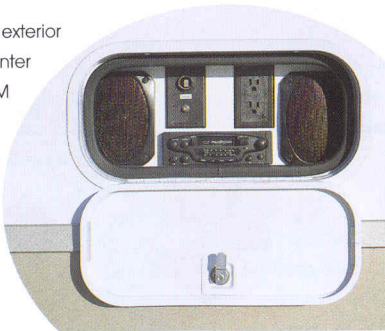


The awning rail does more than support the standard awning. Its integrated rain gutter also serves to channel water to the front and rear of the motor home, away from the awning.



Both the standard Onan® Marquis Gold™ 5,500 watt generator and the available Onan Marquis Gold 7,000 watt generator feature a new, quieter operating design.

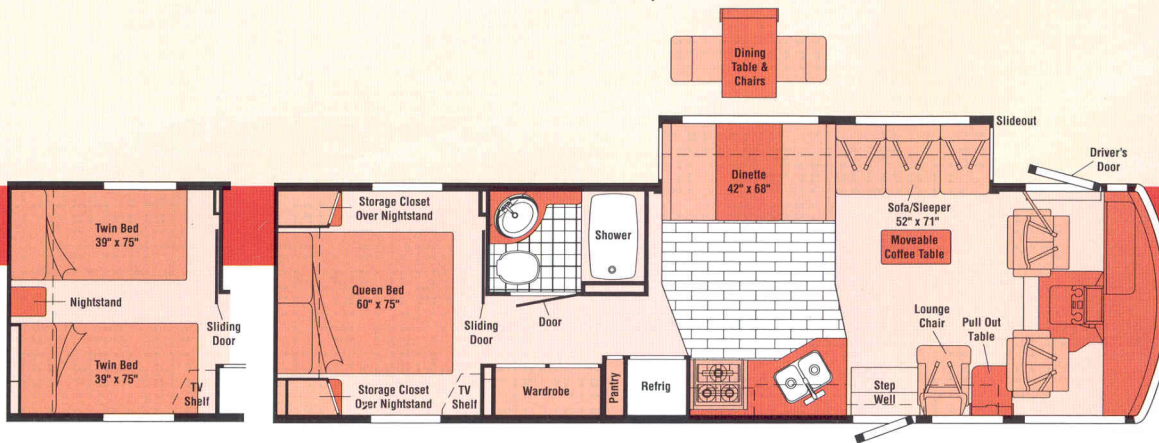
The standard exterior entertainment center features an AM/FM cassette stereo (or available CD), 12 volt DC power supply and 110 volt AC outlet.



The Suncruiser's exterior wash station is a truly handy feature that provides for fast and easy clean-ups. When not in use, it stows away neatly.

2001

Suncruiser Floorplans

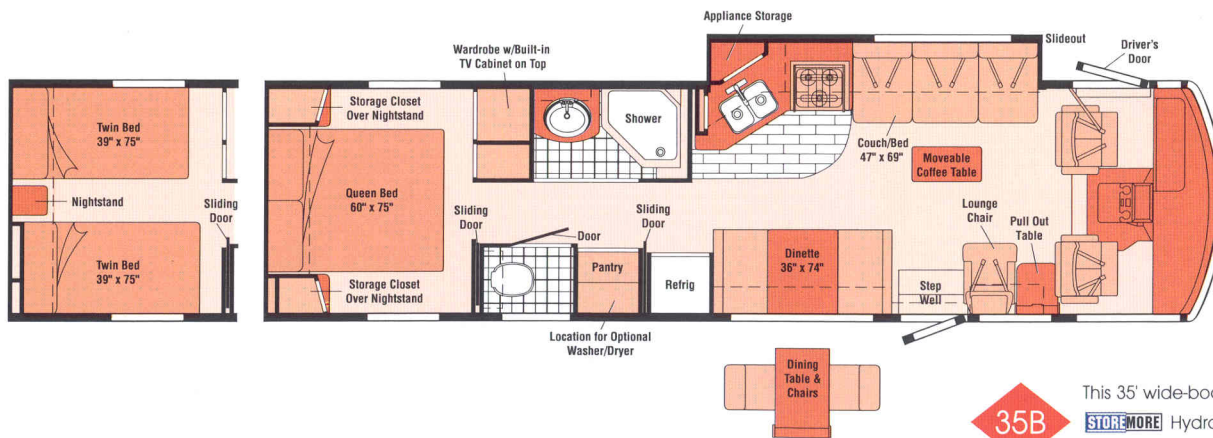


32V

This 32' wide-body features a large dinette/sofa **STOREMORE** slideout which extends a full 30'. The Flexsteel sofa/sleeper means you get a living area that is both roomy and comfortable. Like all Suncruiser floorplans, the 32V includes a moveable coffee table. The available shower package includes a fold-down shower seat and hand-held shower head.

-  Vinyl Floorcovering
-  Vinyl Plank Floorcovering
-  Seatbelts

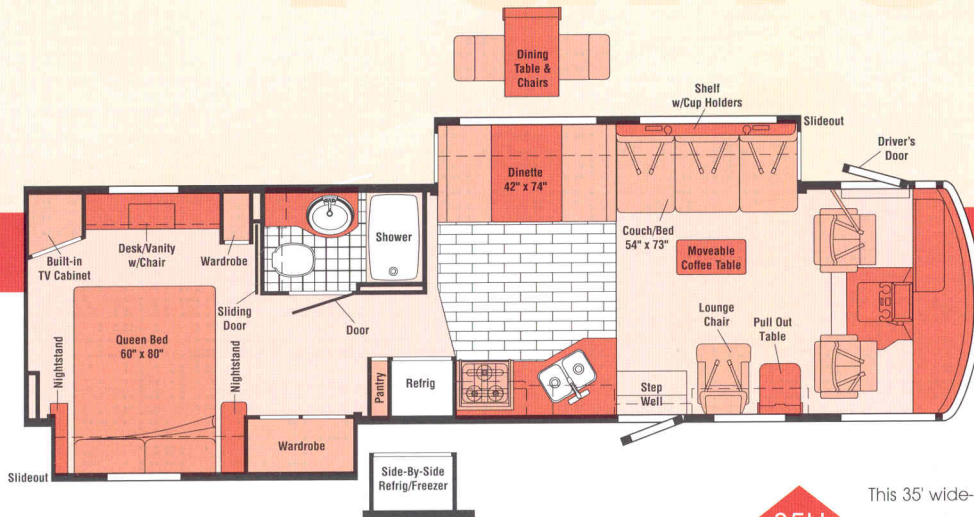
Note: Dimensions shown are for sleeping space only and dashed lines denote overhead storage areas.



35B

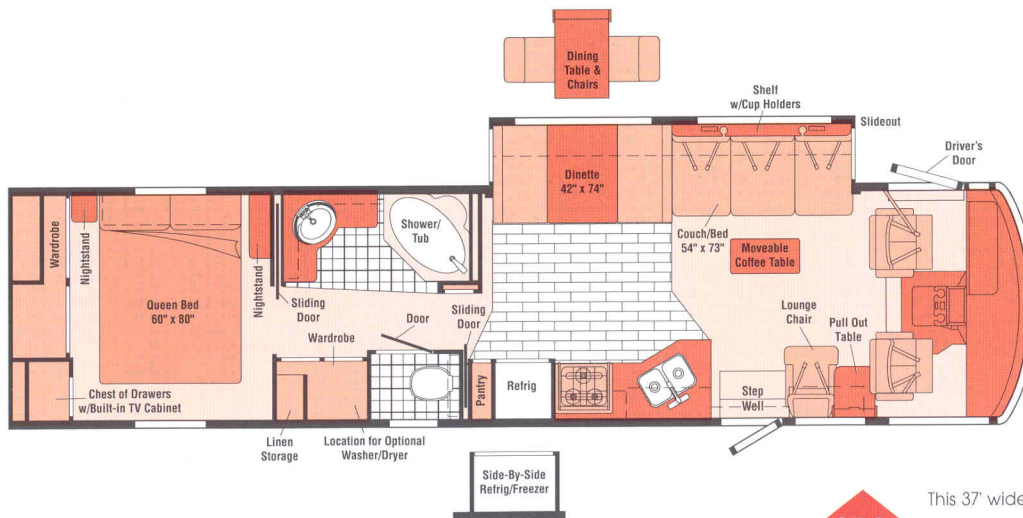
This 35' wide-body features a galley/couch slideout with the **STOREMORE** Hydraulic Slideout System for an abundance of space in the lounge area. The galley can be further enhanced with the available dining table and chairs. The walk-through bath with separate toilet area increases the functional space and privacy in the bath area.

Functional



35U

This 35' wide-body features a **STOREMORE** slideout in the living area and a slideout in the bedroom. The bedroom's increased floor space allows for a built-in TV cabinet and a wardrobe, along with a convenient desk/vanity area with a folding chair.



37G

This 37' wide-body features a dinette/couch **STOREMORE** slideout in the living area, along with an extra large cross-aisle design bathroom with a large vanity, and an angled shower/tub. The bedroom includes a built-in 19\"/>

2001 Suncruiser Specifications

	32V	35B	35U	37G
Length	32'11"	34'11"	34'11"	37'5"
Exterior Height* - Ford/Workhorse	11'9"/11'7"	11'8"/NA	11'8"/NA	11'9"/NA
Exterior Width[^]	8'5.5"	8'5.5"	8'5.5"	8'5.5"
Exterior Storage	76 cu. ft.	73 cu. ft.	88 cu. ft.	97 cu. ft.
Interior Height	6'8"	6'8"	6'8"	6'8"
Interior Width	8'0.5"	8'0.5"	8'0.5"	8'0.5"
Fresh Water Capacity w/Heater* - Ford/Workhorse	90/70 gal.	90 gal./NA	90 gal./NA	90 gal./NA
Holding Tank Capacity - Black/Gray	40/45 gal.	60/54 gal.	40/54 gal.	53/55 gal.
LP Capacity[◇]	28 gal.	28 gal.	28 gal.	28 gal.
Fuel Capacity	75 gal.	75 gal.	75 gal.	75 gal.
GVWR - Ford/Workhorse	20,500/18,000 lbs.	20,500 lbs./NA	20,500 lbs./NA	20,500 lbs./NA
Wheelbase - Ford/Workhorse	208"/200"	228"/NA	228"/NA	248"/NA

AUTOMOTIVE/CHASSIS

	32V	35B	35U	37G
Chassis - Ford[®] 6.8L Triton[™] V-10, 130 amp alternator, 4-speed overdrive transmission	0	\$	\$	\$
Chassis - Workhorse[™] 7.4L Vortec V-8, 124 amp alternator, anti-lock brake system, 4-speed overdrive transmission	\$			
Chassis - Workhorse[™] 8.1L Vortec V-8, 130 amp alternator, anti-lock brake system, 4-speed overdrive transmission	\$			
Hydraulic Leveling Jacks, Spare Tire, Stainless Steel Wheel Liners, Tire Tools wrench & leverage bar, Trailer Hitch 5000# draw bar/350# maximum vertical tongue weight & wiring	\$	\$	\$	\$
Front Shocks/Stabilizer Package Workhorse	0			

CAB AREA & DRIVER CONVENIENCES

	32V	35B	35U	37G
Cab Seats w/Seat Belts 3-point shoulder w/adjustable D-loop & lap w/retractors, armrests, adjustable lumbar support, multi-adjustable swivel/slide/recline, fabric covered, Carpeted Driver & Passenger Floor Mats, Cigarette Lighter/12 Volt Electrical Supply, Convenience Tray, Cruise Control, Driver Entrance Door, Electronic Compass w/Outdoor Thermometer, Intermittent Windshield Wipers, Light Filtering Shades cab windows, Map Light, Power Assist Steering w/Tilt Wheel, Sunvisors (2), Wall Shelf passenger, 12 volt receptacle, Window (Driver) manual roll-down, Window (Passenger) full slider w/screen	\$	\$	\$	\$
Cab Seat Pedestal 6-way power assist, driver	0	0	0	0
Cab Seat Pedestal 6-way power assist, driver & passenger	0	0	0	0
Cab Seats UltraLeather HP covered	0	0	0	0
Defroster Fans (2) auxiliary 2-speed	0	0	0	0
Pull-out Workstation passenger side	0	0	0	0
Rearview Monitor System w/single camera & 1-way audio, Sony [®]	0	0	0	0

ENTERTAINMENT

	32V	35B	35U	37G
25" AC Color TV (Front), CB Prep (includes: antenna, antenna lead, 12 volt power supply), Exterior Entertainment Center w/Cassette DC receptacle, AC duplex receptacle, AM/FM radio, TV jack, radio antenna, exterior antenna jack, speakers (2), lockable compartment, Radio (Cab) AM/FM stereo cassette, roof-mounted flexible rubber antenna, speakers (4), Radio Power Switch main/auxiliary battery, Satellite System Ready, TV Enhancement Package cable input, coax wiring & interior antenna jacks, antenna reminder light, telephone input & interior jack(s), Video Selection System	\$	\$	\$	\$
13" 12 Volt Color TV w/remote, bedroom	\$	\$		
19" AC Color TV w/remote, bedroom			\$	\$
19" AC Color TV w/remote, video selection system, dinette		0		
Compact Multi-disc Changer Sony	0	0	0	0
Deluxe Sound System[*] 25" AC stereo color TV, stereo VCR, amplifier, speakers (4), subwoofers (2)	0	0	0	0
Deluxe Sound System w/5-channel Q [®] surround sound (available September 2000)	0	0	0	0
Exterior Entertainment Center w/CD Player DC receptacle, AC duplex receptacle, AM/FM radio, TV jack, radio antenna, exterior antenna jack, speakers (2), lockable compartment	0	0	0	0
Exterior Entertainment Center Table	0	0	0	0
Radio (Cab) AM/FM stereo CD, Sony	0	0	0	0
Satellite Dish Antenna RV digital, digital elevation sensing unit	0	0	0	0
VCR w/Remote[*]	0	0	0	0

INTERIOR

	32V	35B	35U	37G
Ceiling Lights fluorescent lights, recessed, galley, lounge w/wall switches, Ceiling Lights incandescent w/wall switches, Cupholder, Day/Night Pleated Shades, Decorative Clock, Decorative Wall Mirror oval, beveled, Dual-Glazed/Thermo-Insulated Windows, Front Wraparound Pleated Shade w/Wands, Stepwell Light w/interior switch, Textured Fabric Ceiling, Wardrobe Cabinet carpeted floor, cedar lined, clothes rod, drawers (32V), light, shelf (NA 32V)	\$	\$	\$	\$

	32V	35B	35U	37G
Accessory Package rechargeable flashlight, rechargeable vacuum cleaner	0	0	0	0
Decorative Picture	\$	\$		
Decorative Wall Lamp	\$	\$	\$	\$

CABINERY

	32V	35B	35U	37G
Portsmouth Oak Woodgrain stile-and-rail construction raised panel inserts [*]	\$	\$	\$	\$

COUNTERTOPS

	32V	35B	35U	37G
Solid Surface Countertops galley, Laminate w/wood-look T-mold edging, bath & bedroom (dinette w/solid wood edging)	\$	\$	\$	\$

FLOORCOVERING

	32V	35B	35U	37G
Carpeting w/Pad, Vinyl Floorcovering bath, Vinyl Plank Floorcovering galley	\$	\$	\$	\$

FURNITURE

	32V	35B	35U	37G
Coffee Table, Dinette drawer storage below seats, Lounge Chair	\$	\$	\$	\$
Couch w/2 throw pillows	\$	\$	\$	\$
Couch UltraLeather HP w/2 throw pillows	0	0	0	0
Sofa/Sleeper w/2 throw pillows	\$			
Sofa/Sleeper UltraLeather HP w/2 throw pillows	0			
Dining Table & Chairs folding chairs (2), free-standing chairs (2)	0	0	0	0
Lounge Chair UltraLeather HP	0	0	0	0

GALLEY	32V	35B	35U	37G
Coffemaker, Decorative Wall Border, Double Stainless Steel Sink sink covers (countertop material), Fluorescent Under Cabinet Light, Microwave Oven w/Range Fan residential 30", Pantry, Powered Ventilator Fan, Range 3-burner w/large oven, glass door, recessed, sealed burners, Magic Chef, Range Cover, Refrigerator/Freezer large double-door, Norcold® Single-control Faucet w/Pull-out Sprayer, Spice Rack, Wall Mirror, Wastepaper Basket, Water Purification System	\$	\$	\$	\$
Appliance Storage Cabinet		\$		
Countertop Flip-up Extension	\$	\$	\$	
Glass Partition end of galley		\$		
Microwave/Convection Oven w/Range Fan* residential 30"	0	0	0	0
Range Top 3-burner w/storage below, recessed, sealed burners, Magic Chef	0	0	0	0
Refrigerator/Freezer large double-door w/icemaker, Norcold	0	0	0	0
Refrigerator/Freezer side-by-side w/icemaker, Dometic®			0	0

BATH	32V	35B	35U	37G
3-Rod Towel Rack mounted to door, Hair Dryer, Lavatory Cabinet, Makeup Lights, Medicine Cabinet, Oval Sink, Porcelain Toilet w/Foot Pedal Flush, Power Roof Vent, Single-control Lavatory Faucet, Single-control Shower Faucet w/Fixed Shower Head, Shower Light, Skylight, Tissue Holder	\$	\$	\$	\$
Magazine Rack	\$	\$	\$	
Robe Hook		\$		
Shower	\$	\$	\$	
Shower/Tub			\$	
Shower Door folding	\$	\$		
Shower Door textured glass		\$	\$	
Shower Head hand-held			0	
Shower Package hand-held shower head, fold-down shower seat	0	0	0	
Towel Bar		\$	\$	\$
Towel Ring(s)	\$	\$	\$	
Wall Mirror(s)	\$	\$	\$	

BEDROOM	32V	35B	35U	37G
Alarm Clock, Bedspread, DC Receptacle(s), Decorative Wall Lamps, Innerspring Queen-size Mattress Serta® access to storage below, Pillow Shams, Reading Lights, Throw Pillow, Wainscoting w/Chair Rail	\$	\$	\$	\$
Fabric Headboard	\$	\$		
Hamper			\$	
Twin Beds	0	0		
Vanity Cabinet w/fold-up countertop, folding chair, sliding mirrors over window		\$		
Wall Mirror	\$	\$	\$	

EXTERIOR	32V	35B	35U	37G
AC Duplex Receptacle, Awning* patio, Awning Rails w/rain gutter, Double-door Step electric w/door jamb switch, Entrance Door main w/screen door, deadbolt lock, Graphics Package Sahara Metallic recommended w/Summer Straw & Bronzewood, Or Wintergreen Metallic recommended w/Amethyst Frost, Ladder, Locking Fuel-fill Door, Mirrors low mount, electric remote w/defrost, Porch Light w/interior switch, Rear Mudflaps, Service Light driver side, Sidewall Skin 1-piece fiberglass, smooth, high-gloss, Storage Compartments smooth valance panels, trunk liner, gas cylinders, common key w/entrance doors, single paddle latch	\$	\$	\$	\$
Undercoating Workhorse		0		

SYSTEMS	32V	35B	35U	37G
1" Water Tank Drain, 10 Gallon Electronic Ignition LP Gas/110 VAC Water Heater, 10 Watt Solar Panel/Battery Charger, 30 Amp Power Cord, AC/DC Electrical Distribution System AC & DC breaker panels, 45 amp converter/charger, Automatic Dual Battery Charge Control, Automotive Heater/Air Conditioner, Auxiliary Start Circuit, Coach Batteries 2-deep cycle, Coach Battery Disconnect System, Exterior Wash Station, Generator 5,500 watt, Onan Marquis Gold, gas, Heated Drainage System*, Heated Holding Tank Compartment, Holding Tank Flushing System black tank only, LP Tank permanent mount w/gauge, ONEPLACE Systems Center wall mount, battery digital voltmeter, PowerLine energy management display, generator hourmeter gauge, generator start/stop switch, heating/AC thermostat, holding tank levels, LP tank level, solar panel/battery charger light, water heater switch, water heater on light & pilot indicator light, water pump switch, water tank level, POWERLINE™ Energy Management System, Service Center (Drainage/Water) city water hookup/tank diverter fill, drainage valves, exterior wash station w/pump switch, sewer hose, Service Center (Electrical) cable input, power cord, telephone input, Shoreline/Generator Automatic Changeover Switch, TRUEAIR® Central Air Conditioning System, Water Heater Winterization Bypass Valve, Water Pump demand, Water System Winterizing Valve, Water Tank Fill pressurized city hookup w/diverter valve, Water Tank Fill w/Locking Door	\$	\$	\$	\$
50 Amp Power Cord	0	0	0	0
Auxiliary Automotive Heater*	0	0	0	0
Furnace 35,000 BTU, Suburban® low profile	\$			
Furnace 40,000 BTU, Suburban, low profile		\$	\$	\$
Generator 7,000 watt, Onan Marquis Gold, gas	0	0	0	0
Home Comfort Plus Package central air heat pump, auxiliary automotive heater, insulated power ventilator fans (bath & galley)	0	0	0	0
Inverter DC/AC, 130 watt	0	0		
Inverter DC/AC, 300 watt			0	0
Washer/Dryer combination		0	0	
Washer/Dryer Prep		\$	\$	

SLIDEOUT	32V	35B	35U	37G
Slideout Room (couch/dinette 32V, 35U, 37G & couch/galley 35B), slideroom cover (slideout section), STOR3MORE	\$	\$	\$	\$
Slideout Room (bed/wardrobe), 24" extension				\$

SAFETY	32V	35B	35U	37G
3-Point Cab Seat Belts, 10 B.C. Fire Extinguisher, Acrylic Exterior Assist Handle w/Logo, Bumpers front & rear, Carbon Monoxide Detector/Alarm, Center High-mount Stop Lamp, Courtesy Light(s) w/Wall Switch(es), Escape Window, Ground Fault Interrupter, Interior Assist Bar, LPG Leak Detector/Alarm, Laminated Safety Glass Windshield, Lap Belts In Selected Areas, Smoke Detector/Alarm	\$	\$	\$	\$
Daytime Running Lamps Ford	0	\$	\$	\$

WARRANTY	32V	35B	35U	37G
12-Month/15,000-Mile Basic Warranty, 36-Month/36,000-Mile Warranty On Structure,** 10-Year Limited Parts & Labor Warranty On Roof	\$	\$	\$	\$

NA Not Available

- The height of each model is based on the curb weight of a typically equipped unit on the standard chassis. The actual height of your vehicle may vary by as much as 2" depending on chassis or equipment variations.

^ SunCruiser floorplans feature a wide-body design — over 96". In making your purchase decision, you should be aware that some states restrict access on some or all state roads to 96" in body width. Before making your purchase decision, you should confirm the road usage laws in the states of interest to you.

* Not all items available in combination. See dealer for details.

◇ Capacities shown are tank manufacturer's listed water capacity (W.C.). Actual filled LP capacity is 80% of listing due to overfilling prevention device on tank.

\$ Standard

0 Optional

~ Replaces standard 7.4L engine mid-year 2001 model year.

** See your dealer for complete warranty documentation information.

Winnebago Industries' continuing program of product improvement makes specifications, equipment, model availability and prices subject to change without notice. Comparisons to other motor homes are based on the most recent information available.

Suncruiser

A Few More Details



WIT Club



Membership in the Winnebago Itasca Travelers (WIT) Club is a great way to meet people and get even more enjoyment from your motor home. As an owner of a Winnebago Industries RV, you can join the Club and take advantage of some great services — like professional travel planning and mail forwarding — and participate in some great rallies and caravans. Call 1-800-643-4892 ext. 1 for more information.

TripSaver

In recent RVDA surveys, Winnebago Industries has been voted number one in the industry for service, parts, and warranty support by dealers across the country. And who would know better than the people who service motor homes? We believe a large part of our service success is due to our commitment to getting you back on the road as soon as possible after experiencing a mechanical emergency. That's why we created TripSaver. This industry-leading program guarantees that qualifying, in-stock emergency warranty repair parts will be shipped directly from the factory within 24 hours. Furthermore, a Winnebago Industries built part or component that is not in stock will be specially manufactured and shipped air freight.



TRIPSaver
Emergency-Shipped Parts

Warranty Protection

All new Itasca motor homes include a 12-month/15,000-mile basic protection plan, 36-month/36,000-mile warranty protection on lamination and slideroom construction and assemblies, and a standard 10-year limited parts and labor warranty on the roof. As if those aren't enough, we also stand behind most major appliances and equipment we install (a rarity in the industry) so you can count on the convenience of one-stop service for warranty repairs. It all adds up to some of the most comprehensive warranty programs in the industry backed by the most recognized motor home manufacturer in the world.

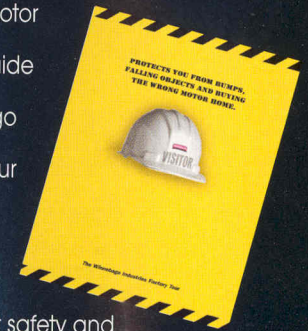


Visit us at
www.winnebagoind.com

Read this guide.

To learn more about what separates our motor homes from others, ask for this free guide next time you visit your Winnebago Industries dealer. It explains our superior manufacturing process. Use it to learn

more about important safety and quality considerations as you shop for the motor home that's best for you.



For Sales and Service Information Contact:



©2000 Winnebago Industries, Inc.

Printed in USA

Seat belts are your most important hookup. Always buckle up.