

2004 *Suncruiser*



AFFORDABLE LUXURY

IMPROVING EVERY YEAR

For motor home enthusiasts, the Itasca Suncruiser® is synonymous with the term "user-friendly." So it's no surprise that the Suncruiser is our #1 selling motor home. And we continue to make improvements every year.

For 2004 a 24" flat-screen Sony® TV is standard (a 27" Sony TV is standard on the 38R). You can also add a Sleep Number® bed from Select Comfort™ to any model. In addition to new features, you'll enjoy all the creature comforts you've come to expect in the Suncruiser, such as solid-surface countertops, the OnePlace™ Systems Center, Rest Easy® Multi-Position Lounge, BenchMark™ Full Comfort Dinette, and RV Radio®.

With so much to say, it's a wonder we were able to fit it all into one brochure. On the following pages you'll find many of the exciting key Suncruiser features detailed. But the beauty of the Suncruiser is something you should appreciate in person. Visit your local dealer and see why the 2004 Itasca Suncruiser leads the pack.



38G Fern Garden with Portsmouth Oak

▲ Relax with all the comforts of home. The StoreMore® slideout system expands to create an inviting living room with more comfortable furnishings, including the Rest Easy Multi-Position Lounge. Spacious cabinetry features a highly durable catalyzed finish for a rich, elegant appearance usually reserved for exclusive home cabinetry. User-friendly features include vinyl floorcovering that extends all the way to the entryway so you won't track dirt on the carpeting. Enjoy advanced climate control with TrueAir® Residential Central Air Conditioning. It includes adjustable ceiling vents to deliver cool air evenly throughout the coach. The Home Comfort Plus Package includes a heat pump that helps take the chill off cool mornings without starting the furnace. Dual-glazed windows increase thermal efficiency and include day/night pleated shades for variable levels of light and privacy.

Interior Decors



Crystal Lake



Fern Garden



Stonehenge Taupe



Concert Cherry



Portsmouth Oak



Washed Maple

Suncruiser
2004



▲ The galley is loaded with features that make preparing a meal or snack a breeze. It comes standard with an Amana® 3-burner range with oven and a 30" residential microwave with a sensor cook feature. A microwave/convection oven is also available. The large, solid-surface countertop is extremely durable and easy to clean, while the flip-up extension (NA 37C) provides plenty of work space. A stain-resistant composite sink is sized to accommodate large plates and pans. It includes a single-control faucet with a convenient pullout sprayer.



▲ You'll love the flexibility of the hoop-base recliner. It moves easily to your favorite spot when you're not traveling. Select the available UltraLeather HP™ seat covering for greater luxurious comfort.

► Natural light from the skylight accents the open bath area. The single-control Moen® faucet with Posi-Temp® control maintains a constant shower temperature regardless of any change to the overall water pressure. A shower upgrade package is also available, which includes a fold-down shower seat (NA 31Y and 38G) and a hand-held showerhead. A hair dryer with night-light is mounted to the wall to save space on the solid-surface countertop.



▲ For additional cold storage, choose the available four-door refrigerator/freezer (NA 31Y and 33V). It includes an icemaker for your convenience. An icemaker is also available with the double-door model.

RESIDENTIAL CONVENIENCE



▲ RVers are falling in love with two-way radios and now they're available with every Suncruiser. The set of four multi-channel radios recharges from the coach batteries using the built-in charging station. Nickel metal hydride batteries provide up to 15 hours of standby time and 90 minutes of talk time on a single charge.



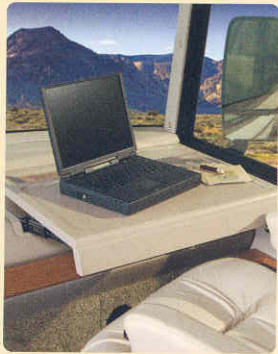
◀ Do laundry at your convenience with the combination washer/dryer. (NA 31Y, 33V and 35U)

▼ Handy features such as the rechargeable flashlight, hand-held vacuum and two-way radios are located in the easily accessible convenience center.





▲ **Driver controls are conveniently located** at your fingertips in the ergonomic cockpit area. The dash features large, easy-to-read switches and gauges that are sized for easy operation. The standard, dash-mounted electronic compass is a helpful navigation tool that displays direction and exterior temperature. An available Sony color rearview monitor system includes a one-way audio feature for ease in backing and maneuvering. Powered sunvisors are also available.



▲ **A passenger workstation** provides an excellent surface for using a laptop computer or writing letters. It slides towards the passenger when needed and includes a storage compartment below it.



◀ **Stay relaxed during long drives** thanks to the high-back, premium cab seats. They incorporate multi-position armrests and manually adjustable lumbar support, as well as slide, swivel and recline features so you can adjust each chair to the position that fits you best. Enhance your ride even further by selecting the six-way power seat pedestal, available for both the driver and passenger seats. Cab seats with the UltraLeather HP upgrade also include adjustable lumbar support.



◀ The driver-side door is a convenience you won't find in all Class A motor homes. The trim panel incorporates a deep cupholder and power mirror controls. A large assist bar is included for easy entrance and exit.



► Staying in for the evening?

Enjoy a variety of entertainment options, starting with the new 24" Sony flat-screen TV (27" on 38R). You can also choose to add a Sony DVD/VCR combo. Select a manual, automatic or in-motion RV digital satellite system and you'll never miss your favorite show. Theatre-quality sound is available when you add the Deluxe Sound System with 5-channel QSURROUND™. Select the available 300 watt inverter to enjoy these features even when you're not connected to shoreline or generator power.



◀ **Itasca owners** continue to rave about the RV Radio. An AM/FM stereo, weather band, cassette deck and CD player are all included. You can even expand your listening options with the available multi-disc CD changer. The radio power switch lets you power the RV Radio from the coach batteries when parked.



Upgrade your listening choices with Sirius® Satellite

Radio programming (requires the satellite-ready radio, available Fall 2003). It offers 100 channels of digital entertainment. High altitude satellites deliver crystal-clear satellite programming anywhere in the U.S. with no signal fades. (Sirius Satellite Radio programming requires a subscription.)



◀ **Eliminate the runaround with the OnePlace Systems Center.** It brings together frequently used switches, gauges and controls in one convenient location so you can check and operate systems at a glance. An overhead light makes it easy to see.

POWERLINE®

► **Keep your electrical systems running smoothly** even when operating your central air conditioning on 30-amp. shoreline power. The PowerLine®

Energy Management System monitors onboard 110-volt electrical usage to automatically minimize the nuisance of tripped campground circuits by controlling the operation of postponable electrical loads during periods of heavy usage. As demand is lowered, PowerLine automatically returns power to secondary appliances and systems.





▲ A rear slideout is standard on every model, creating a spacious bedroom complete with a walk-around, queen-size bed and a full-size wardrobe. The 38G, shown here, even includes two cedar-lined wardrobes for his and her hanging storage. Additional storage can be found in the bedside nightstands, overhead cabinets and under the bed.

▼ The bedroom can be upgraded to include a queen-size Sleep Number bed by Select Comfort. A hand-held remote on each side of the bed lets you quickly and independently adjust the mattress firmness to your ideal level of comfort and support...your Sleep Number, which is The Key to a Perfect Night's Sleep!™



COMFORTS OF HOME



▲ Another smart SunCruiser feature is this handy bedroom desk/vanity area (NA 38R). Conveniences such as a large desktop, a tip-up storage area, an additional phone/modem jack and a folding chair are all included. Other residential bedroom features include a tip-out hamper (NA 31Y, 33V), sliding mirrors (35U only), built-in 19" TV and an alarm clock.



◀ You'll have plenty of options with this available multi-function table. It provides dining for two, expands to seat four, or can be used as a computer desk or workstation. (Available on the 35U, 37C and 38G)

▲ The available BenchMark Full Comfort Dinette is another Winnebago Industries® exclusive. It features seats with an innerspring design for complete residential style and comfort. The seats also lift up to reveal large, easy-to-access storage. BenchMark even converts into a comfortable bed. (NA 37C and 38R)

▼ The Rest Easy Multi-Position Lounge provides unmatched seating flexibility and comfort.



1. It starts as a plush couch with a convenient flip-down beverage tray.



2. Touch a button and it becomes a relaxing recliner with a pullout ottoman.



3. Touch the button again and it's a contoured 75" x 60" bed.



▲ The elegant dining table provides spacious dining for two and easily expands to accommodate guests. It comes standard on all models.



▲ Escape from the summer heat and into the precision climate control of TrueAir Residential Central Air Conditioning. Powered by a Coleman®-Mach® central cooling unit, TrueAir offers superior environmental control throughout the coach. The cooling unit is located in the basement to provide a lower vehicle profile, reduce noise and eliminate roof runoff from A/C condensation. This location is also much easier to service and provides a lower center of gravity than roof pod units. With the standard Home Comfort Plus Package, you get an auxiliary automotive heater, insulated power roof vents and a heat pump to help warm your coach on cool mornings without using the LP furnace.



► One key opens most doors and compartments, thanks to the convenient KeyOne™ System. The double-bit key fits easily into the lock no matter which way it is inserted.

► Satellite ready. Every Suncruiser comes prewired for an available satellite dish. Choose from manual, power, or in-motion satellite dish antennas.



► For auxiliary power without a lot of noise, the Suncruiser features a 5,500 watt Onan® Marquis Gold™ generator. It's the quietest generator in its class and includes digital voltage regulation and self-diagnostic capability for quick troubleshooting. A 7,000 watt Onan Marquis Gold generator is also available.



▲ Built-in rain gutters channel rainwater away from the sidewalls, entrance door and windows, helping keep the exterior clean and streak free.



▲ Stored gear is always at hand with the hydraulically driven StoreMore slideout system. StoreMore allows exterior compartments to extend with the slideroom for easy access. StoreMore exterior compartments are also designed to accommodate large or odd-shaped items so you can bring along your golf clubs or even a folding ladder. Compartment doors feature single-paddle latches and gas struts for easy opening. Compartment lights are door-activated or can be turned off manually using the shutoff switch by the entrance door.



▲ **An exterior entertainment center** lets you listen to your favorite music as you enjoy the great outdoors. It includes: an AM/FM stereo radio, CD player, two speakers, 12-volt powerpoint, TV jack and a removable TV table.

VERSATILE SYSTEMS

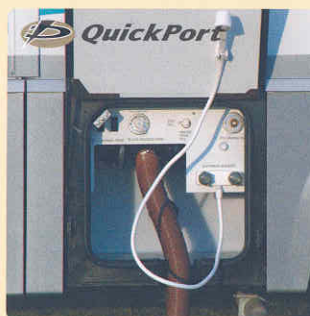


▲ **Enter and exit with confidence.** Large interior and exterior assist handles are located by the entrance door for your convenience.

▼ **An expanded view** is provided by the large flat and convex surfaces of the breakaway exterior mirrors. This breakaway design allows the mirrors to fold back against the coach for easy storage. Additional mirror features include turn signal lights, electric controls and electric defrost that helps increase visibility and safety.



▼ **Keep dirt and sand outside** by using the exterior wash station. The same heated compartment also conveniently houses the major plumbing connections and service points. The QuickPort™ Service Connection Hatch for the power cord and hoses makes hooking up a snap. A Water System Winterization Package with a water heater bypass valve and a siphon tube takes the hassle out of winter storage preparation.



◀ **The QuickConnect Coupling Valve** provides quick and clean hookups with the easy-to-operate valve. For added convenience, QuickConnect stores in its own holster when not in use.

Exterior Color Themes

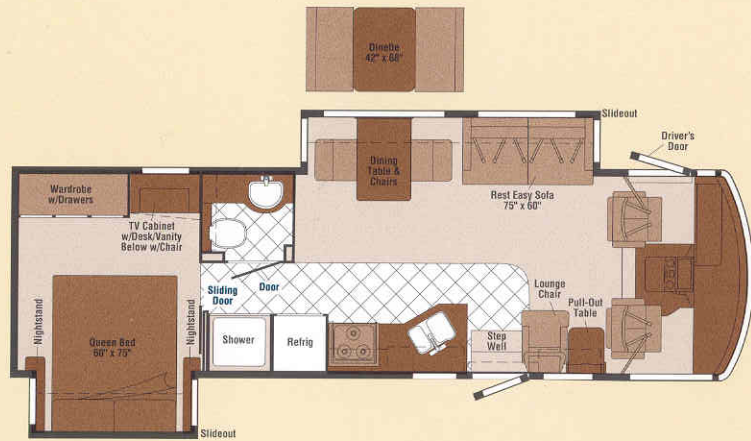


Jaguar Blue Metallic



Warm Silver Metallic

FLOORPLANS



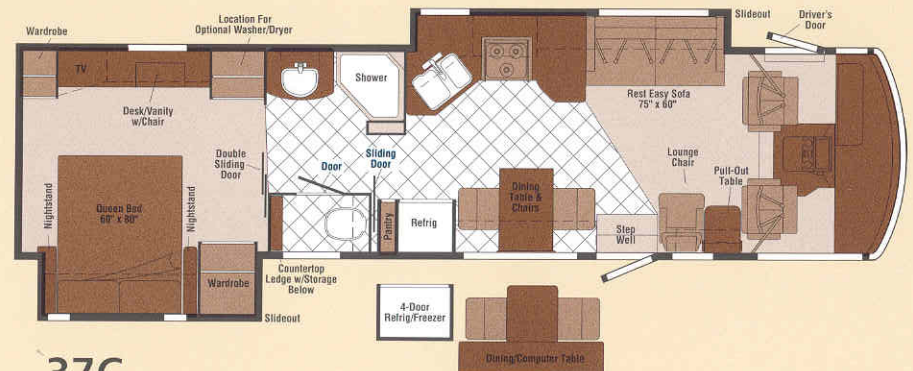
31Y



35U



33V



37C

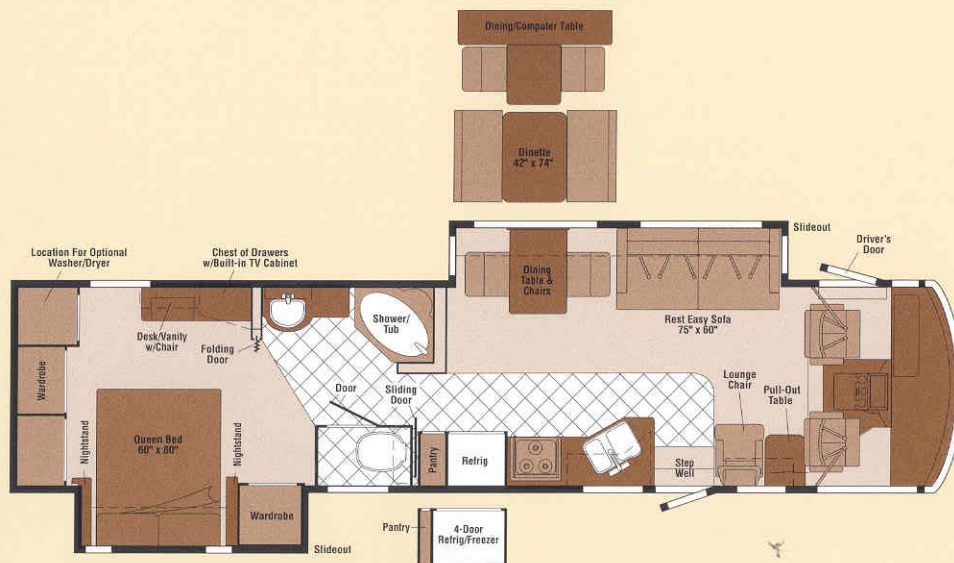


Vinyl
Floorcovering



Seat
Belts

Note: Dimensions shown are for sleeping space only and may vary due to styling differences. Dashed lines denote overhead storage areas.



38G



38R *New*

Where style meets function. The one-piece rear fiberglass cap and stainless steel wheel liners add a touch of class. A variety of Ford® and Workhorse™ chassis with gross vehicle weight ratings ranging from 20,500 to 22,000 pounds let you tailor your coach to fit your driving and towing requirements perfectly. Choose the 22.5" tires for a diesel pusher-like look and performance (NA 31Y and 33V).



SPECIFICATIONS

Chassis Information	31Y	33V	35U	37C	38G	38R NEW
Length	31'8"	33'7"	35'8"	37'4"	38'2"	38'11"
Exterior Height ¹ – F / W	11'0" or 11'3" / 11'2"	11'5" or 11'8" / 11'4"	11'7" or 12'0" / 10'11" / 11'6"	10'11" or 11'2" / 11'10"	11'5" or 11'8" / 11'6"	11'10"
Exterior Width ²	8'6"	8'6"	8'6"	8'6"	8'6"	8'6"
Exterior Storage ³ (cu. ft.)	52.7	60.4	79.5	101.1	98.1	76.0
Interior Height	6'8"	6'8"	6'8"	6'8"	6'8"	6'8"
Interior Width	8'1"	8'1"	8'1"	8'1"	8'1"	8'1"
Fresh Water Capacity w/Heater (gal.)	90	90	90	90	90	90
Holding Tank Capacity – Black / Gray (gal.)	45 / 41	52 / 45	40 / 54	53 / 55	53 / 55	40 / 54
LP Capacity ⁴ (gal.)	28	28	28	28	28	28
Fuel Capacity (gal.)	75	75	75	75	75	75
GCWR (lbs.)	26,000 / 26,000 [Ⓢ]	26,000 / 26,000 [Ⓢ]	26,000 / 26,000 [Ⓢ] / 26,000 [Ⓢ]	26,000 / 26,000 [Ⓢ]	26,000 / 26,000 [Ⓢ]	26,000 [Ⓢ]
GVWR (lbs.)	20,500 / 20,700 [Ⓢ]	20,500 / 20,700 [Ⓢ]	22,000 / 20,700 [Ⓢ] / 22,000 [Ⓢ]	22,000 / 22,000 [Ⓢ]	22,000 / 22,000 [Ⓢ]	22,000 [Ⓢ]
GAWR – Front (lbs.)	7,000 / 7,500 [Ⓢ]	7,000 / 7,500 [Ⓢ]	7,500 / 7,500 [Ⓢ] / 8,500 [Ⓢ]	7,500 / 8,500 [Ⓢ]	7,500 / 8,500 [Ⓢ]	8,500 [Ⓢ]
GAWR – Rear (lbs.)	13,500 / 13,500 [Ⓢ]	13,500 / 13,500 [Ⓢ]	14,500 / 13,500 [Ⓢ] / 15,000 [Ⓢ]	14,500 / 15,000 [Ⓢ]	14,500 / 15,000 [Ⓢ]	15,000 [Ⓢ]
Wheelbase	190"	208"	228"	248"	248"	248"

F Ford®

W Workhorse™

Ⓢ Workhorse™ Chassis w/19.5" Tires




Ⓢ Workhorse™ Chassis w/22.5" Tires

Standards & Options

	31Y	33V	35U	37C	38G	38R
Automotive/Chassis						
	See chart above for chassis weight ratings & tire sizes					
S S S S S						
	Chassis – Ford® 6.8L Super-Duty V10 SOHC Triton™ engine, 310-hp, 4R100 electronic 4-speed overdrive transmission, 130-amp. alternator, 4-wheel anti-lock brakes					
O O O O O S						
	Chassis – Workhorse™ 8.1L Vortec V8, 340-hp, Allison® 1000 electronic 5-speed overdrive transmission, 145-amp. alternator, 4-wheel anti-lock brakes					
S S S S S S						
	Leveling Jacks HWH® hydraulic, manual touch pad w/chime, (Ford® only) Tire spare (NA 38R), Tire Tool wrench, Trailer Hitch 5,000-lbs. drawbar/350-lbs. (500-lbs. w/Workhorse™) maximum vertical tongue weight ⁵ & wiring, Wheel Liners stainless steel					
Cab Area & Driver Conveniences						
S S S S S S S						
	Cab Seats (fabric) w/3-point adjustable seat belts, multi-position armrests, headrest, manually adjustable lumbar support, multi-adjustable swivel/slide/recline, Cab Sound Control Package , Cigarette Lighter/12-Volt Powerpoint , Compass electronic w/outdoor thermometer, Convenience Tray , Cruise Control , Door driver w/power window, assist bar, KeyOne™ (common key w/entrance door & exterior storage compartments), trim panel w/beverage holder, power mirror controls, Courtesy Light , Floor Mats carpet, driver & passenger, Map Lights , Shades light filtering, cab windows & front wraparound, Shelf passenger side w/beverage holder, storage, 12-volt powerpoint, Steering Wheel tilt w/power assist, Sunvisors (2) , Window (passenger) full-slider w/screen, dual-glazed/thermo-insulated, Windshield Wipers intermittent, Workstation in dash					
S S S S						
	Steering Wheel custom (Workhorse™ 22,000 lb. only)					

	31Y	33V	35U	37C	38G	38R
Cab Area & Driver Conveniences (cont.)						
O O O O O						
	Cab Seats (UltraLeather HP™) manual adjustable lumbar support					
O O O O O						
	Cab Seat Pedestal 6-way power assist (driver)					
O O O O O						
	Cab Seats Pedestal 6-way power assist (driver & passenger)					
O O O O O						
	Defroster Fans (2) auxiliary 2-speed w/instrument panel switch					
O O O O O						
	GPS Navigation System (available Fall 2003)					
O O O O O						
	Monitor System rearview w/single camera, color & one-way audio, Sony®					
O O O O O						
	Sunvisors (2) powered, switch					
Entertainment						
S S S S S S S						
	CB Prep antenna, antenna lead, 12-volt powerpoint, Entertainment Center (Exterior) w/CD Player DC receptacle, AC duplex receptacle, AM/FM radio, exterior antenna jack, TV jack, radio antenna, speakers (2), lockable compartment, removable table, NO-RADIO (Cab) AM/FM stereo cassette/CD player w/weather band, remote, roof-mounted flexible rubber antenna, speakers (4), Radio Power Switch main/auxiliary battery, Satellite System Ready , Telephone input & interior jacks, TV 19" Color AC w/remote, bedroom, TV 24" Stereo Color AC w/remote, flat-screen, Sony® (NA 38R), TV Enhancement Package antenna (amplified), interior jacks, coax wiring, cable input, antenna check reminder light, Video Selection System					
O O O O O						
	Compact Multi-disc Changer					
O O O O O						
	DVD/VCR Stereo combo w/remote, Sony®					
S						
	Entertainment Center TV 27" stereo color flat-screen AC w/remote, Sony®					

	31Y	33V	35U	37C	38G	38R
Entertainment (cont.)						
O O O O O						
	Radio satellite (available Fall 2003), Sirius®					
O O O O O						
	Radios (4) two-way, docking port w/charger					
O O O O O						
	Satellite Dish Antenna RV digital, elevation sensing unit, power or manual, Winegard®					
O O O O O						
	Satellite System RV digital, in-motion, Winegard®					
O O O O O						
	Sound System Deluxe w/QSUrround™ amplifier, speakers (5), sub-woofers (2)					
Interior						
S S S S S S S						
	Accessory Package rechargeable flashlight, rechargeable vacuum cleaner, Ceiling fabric, Clock , Lights ceiling, incandescent, bath, bedroom w/wall switches, Light decorative oval, Lights fluorescent, recessed, galley, lounge w/wall switches, Lights reading, Mini Blinds galley & bath, Roof Vent Shades , Shades day/night pleated, lounge, dinette & bedroom, Windows dual-glazed/thermo-insulated					
S S S						
	Light wall lamp (lounge area)					
S S						
	Picture					
S S S S S						
	Mirror					
Cabinetry						
O O O O O						
	Portsmouth Oak or Concert Cherry or Washed Maple stile-and-rail construction w/arched raised-panel inserts					
Floorcovering						
S S S S S S S						
	Carpeting w/pad, Vinyl Tile bath, galley					

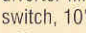

31Y	33V	35U	37C	38G	38R	Furniture					
S	S	S	S	S	S	Dining Table & Chairs ⁶ (2) free standing, (2) folding					
O	O	O	O				Full Comfort Dinette access to storage below				
S	S	S	S	S		Lounge Chair ⁶ (Fabric) w/cabinet & table w/magazine rack, hoop-base, recliner, rocker, footrest					
O	O	O	O	O	O	Lounge Chair (UltraLeather HP [™]) hoop-base					
		S				Lounge Chair (Fabric) hoop-base, recliner, rocker, footrest					
		O	O	O		Multi-Purpose Table & Chairs ⁶ (2) free standing, (2) folding					
S	S	S	S	S	O		Multi-Position Lounge (Fabric) throw pillows & fold-down beverage holder				
O	O	O	O	O	O		Multi-Position Lounge (UltraLeather HP [™]) dual-control				
		S				Sofa (Fabric) J-lounge, power, recliner					
		O				Sofa (UltraLeather HP [™]) J-lounge, power, recliner					

31Y	33V	35U	37C	38G	38R	Galley					
S	S	S	S	S	S	Coffeemaker, Countertops solid-surface, Faucet single-control, w/pullout sprayer, Light fluorescent, under cabinet, Microwave vented range fan, Range 3-burner w/large oven, glass door, recessed, sealed burners, one w/high output Amana [®] Range Cover, Refrigerator/Freezer large double-door, Norcold [®] Sink double-bowl molded w/sink covers (countertop material), Wastepaper Basket, Water Purification System w/separate faucet					
S	S	S		S	S	Countertop Flip-up Extension					
				S		Magazine Rack					
O	O	O	O	O	O	Microwave/Convection Oven Sharp[®]					
	S	S	S	S	S	Pantry adjustable shelves (33V w/dual pantries)					
O	O	O	O	O	O	Range Top 3-burner w/storage below, sealed burners, Amana [®]					
O	O	O	O	O	O	Refrigerator/Freezer large double-door w/icemaker, Norcold [®]					
	O	O	O	O		Refrigerator/Freezer⁶ four-door w/icemaker, Norcold [®]					
		S		S		Utility Tray tip-out					
		S		S		Wall Border					

31Y	33V	35U	37C	38G	38R	Bath					
S	S	S	S	S	S	Cabinet lavatory, Cabinet medicine, Countertops solid-surface, Faucet (lavatory) dual-control, Faucet (shower) single-control, fixed showerhead w/Posi-Temp [®] Hair Dryer wall-mounted w/night-light, Light shower, Lights makeup, Shower Door textured glass, Shower Skylight, Sink oval, Tissue Holder, Toilet (porcelain) w/foot-pedal flush, Towel Rack 3-rod, mounted to door					
	S			S		Cabinet linen					
S	S		S	S		Magazine Rack					
S		S		S		Mirror					
S		S	S	S		Robe Hook					
S	S		S	S		Shower					
	S					Shower w/removable clothes rod					
		S				Shower/Tub					
O		O				Shower Head hand-held					
	O	O	O		O	Shower Package hand-held showerhead, fold-down shower seat					
S	S	S	S	S	S	Towel Bar					
S	S		S	S		Towel Ring					

31Y	33V	35U	37C	38G	38R	Bedroom					
S	S	S	S	S	S	Alarm Clock, Bed queen, innerspring mattress, w/underbed storage, Bedsprad, Ceiling Molding, Headboard, Light decorative ceiling w/dimmer switch, Lights decorative wall lamps (2), Nightstands (2), Pillows, Powerpoint 12-volt DC receptacle(s), Throw Pillow, Wall Border, Wardrobe Cabinet carpeted floor, clothes rod, cedar-lined, drawers (NA 35U & 38R), light, shelves (37C & 38G)					
		S	S	S	S	Hamper tip-out					
S	S	S	S	S	S	Mirror backwall					
O	O	O	O	O	O	Sleep Number[®] Bed queen by Select Comfort [™]					
S	S	S	S	S	S	Vanity Cabinet w/fold-up countertop, folding chair, sliding mirrors over window (35U only)					
S	S	S	S	S	S	Wainscoting w/chair rail					

31Y	33V	35U	37C	38G	38R	Exterior					
S	S	S	S	S	S	Awning⁶ patio, Awning Rails rain gutters, Door entrance w/separate screen door, deadbolt lock, Door fuel-fill, Entrance Door Steps electric w/doorjamb switch, Exterior Graphics Packages Jaguar Blue Metallic Or Warm Silver Metallic, Ladder, Lights fog lamps, Light porch w/interior switch, Light driver side service, Mirrors electric/remote w/defrost, Mudflaps front & rear, Receptacle AC duplex, Sidewall Skin one-piece smooth fiberglass, high-gloss, Storage Compartments smooth valance panels, trunk liner, gas struts, TriMark [®] KeyOne [™] System, paddle latch, lights					
	O	O	O	O	O	Awning⁶ patio, electric, w/wind sensor, remote					
O	O	O	O	O	O	Undercoating Workhorse [™]					

31Y	33V	35U	37C	38G	38R	Systems					
S	S	S	S	S	S	Automotive Heater/Air Conditioner, Auxiliary Start Circuit, Batteries (Coach) (2) deep cycle, group 24, Battery (Coach) disconnect system, Battery Charge Control automatic dual, Drain 1" water tank, Electrical Distribution System AC & DC breaker panels, 45-amp. electronic converter/charger, Generator 5,500 watt, Onan [®] Marquis Gold [™] , gas, Generator/Shoreline Automatic Changeover Switch, Home Comfort Plus Package central air heat pump, auxiliary automotive heater, insulated powered ventilator fans (bath & galley), ONEPLACE[™] Systems Center wall-mounted, battery digital voltmeter, energy management display, generator hourmeter gauge, generator start/stop switch, holding tank levels, LP tank level, solar panel/battery charger light, water heater switch & lights, water pump switch & light, water tank level, courtesy light (ceiling mounted), Power Cord 30-amp., POWERLINE[™] Energy Management System, Service Compartment (Drainage/Water) city water hookup/tank diverter fill, drainage valves, exterior wash station w/pump switch, 10' sewer hose  coupling valve,  service connection hatch, Service Center (Electrical) cable input, power cord, telephone input, Solar Panel 10 watt battery charger, Tank flushing system, black tank only, Tank holding, heated compartment, Tank LP , permanent mount w/gauge, TRUEAIR[™] Central Air Conditioning System, Water Heater 10 gallon electronic ignition, 120 vac/LP gas w/Motoraid, Water System Winterization Package water heater bypass valve & siphon tube, Water Pump demand, variable speed, Water Tank Fill gravity w/locking door, Water Tank Fill pressurized city hookup w/diverter valve					

31Y	33V	35U	37C	38G	38R	Systems (cont.)					
S	S					Furnace 35,000 BTU, low profile					
	S	S	S	S		Furnace 40,000 BTU, low profile					
O	O	O	O	O	O	Generator 7,000 watt, Onan [®] Marquis Gold [™] gas, Inverter⁶ DC/AC, 300 watt, Power Cord 50-amp.					
		O	O	O		Washer/Dryer Combination					
	S	S	S			Washer/Dryer Prep					

31Y	33V	35U	37C	38G	38R	Slideout					
S	S	S	S	S	S	Slideout Room (bed 31Y, 33V & bed/wardrobe 35U, 37C, 38G, 38R)					
S	S	S		S		 Slideout Room (sofa/dinette) w/slideroom cover					
		S				 Slideout Room (galley/sofa) w/slideroom cover					
			S			 Slideout Room (lounge/galley) w/slideroom cover					

31Y	33V	35U	37C	38G	38R	Safety					
S	S	S	S	S	S	Assist Handle exterior, acrylic w/logo, Assist Bar interior, Bumpers front & rear, Detectors/Alarms LP leak, smoke, carbon monoxide, Fire Extinguisher 10 B.C., Ground Fault Interrupter, Light center high-mount brake lamp, Light courtesy w/wall switch, Lights daytime running lamps, Window escape, Windshield laminated safety glass					

31Y	33V	35U	37C	38G	38R	Warranty⁷					
S	S	S	S	S	S	12-month/15,000-mile basic limited warranty⁸, 36-month/36,000-mile warranty on structure⁸, 10-year limited parts & labor warranty on roof skin⁸					

- The height of each model is based on the curb weight of a typically equipped unit on the standard chassis. The actual height of your vehicle may vary by as much as 2" depending on chassis or equipment variations.
- Suncruiser floorplans feature a wide-body design — over 96". In making your purchase decision, you should be aware that some states restrict access on some or all state roads to 96" in body width. Before making your purchase decision, you should confirm the road usage laws in the states of interest to you.
- Your motor home's load capacity is designated by weight, not by volume, so you cannot necessarily use all available space when loading your motor home.
- Capacities shown are tank manufacturer's listed water capacity (W.C.). Actual filled LP capacity is 80% of listing due to overfilling prevention device on tank.
- Actual towing capacity is dependent on your particular loading and towing circumstances which includes the GVWR, GAWR and GCWR as well as adequate trailer brakes. Please refer to your vehicle's operator's manual for further towing information.
- Not all items available in combination. See dealer for details.
- See separate chassis warranty details provided in owner's packet.
- See your dealer for complete warranty information.

NA Not Available

S Standard

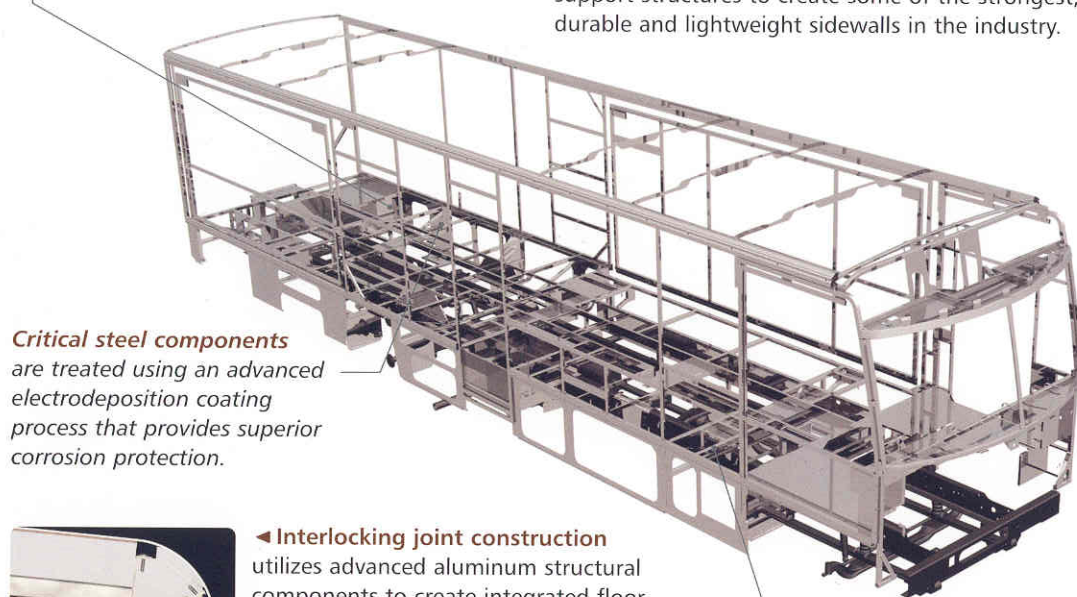
O Optional

Winnebago Industries[®] continuing program of product improvement makes specifications, equipment, model availability and prices subject to change without notice. Comparisons to other motor homes are based on the most recent information available.

Not all motor homes are created equal. SuperStructure® is the term given to Winnebago Industries' structural motor home design and construction. Rather than a single component, it is the culmination of design integration that incorporates steel and aluminum substructures, composite-design laminated floor risers, interlocking joint technology and Thermo-Panel® floor, roof and sidewalls to form an incredibly strong, durable vehicle body.

Laminated risers feature a welded aluminum core for superior strength and provide a stable base for the floor structure and storage compartments.

We invented Thermo-Panel sidewall construction and, over the years, have perfected this innovative composite construction process. It combines an exterior fiberglass panel, high-density block foam insulation and welded aluminum support structures to create some of the strongest, most durable and lightweight sidewalls in the industry.



Critical steel components are treated using an advanced electrodeposition coating process that provides superior corrosion protection.



◀ **Interlocking joint construction** utilizes advanced aluminum structural components to create integrated floor-to-sidewall and sidewall-to-roof joints. This design effectively distributes the

weight of the walls and roof, making a stronger and more durable body than competitor designs that require screws to carry the weight.

The foundation substructure maximizes longitudinal and cross-coach support.



1-year old Itasca fiberglass roof



1-year old competitor's rubber roof

◀ **Built to a higher standard.** The SunCruiser features a crowned, one-piece fiberglass roof, backed with a 10-year limited parts-and-labor roof skin warranty. Fiberglass offers superior strength, attractiveness and durability over the rubber roofs found on many competitive models which can chalk, streak and degrade over time. Fiberglass also provides increased puncture and tear resistance.

Committed to service. We back our motor homes with the industry's best service after the sale.



TRIPsaver
FAST TRACK PARTS

- 12-month/15,000-mile basic limited warranty
- 36-month/36,000-mile warranty on structure
- Standard 10-year limited parts-and-labor roof skin warranty
- Complimentary 24-hour roadside assistance program
- TripSaver Fast Track Parts. TripSaver guarantees that in-stock warranty parts ship directly to your dealer within 24 hours.
- National dealer service network



Recognized quality. Recreation Vehicle Dealer Association members annually rate RV manufacturers on the quality of their products, and sales and service support. Winnebago Industries has achieved the coveted Quality Circle award every year since its inception, the only RV manufacturer to do so.



All motor homes are **not** created equal. Learn more about what sets Winnebago Industries apart. Ask your dealer for this guide. It will help you learn what makes Winnebago Industries motor homes distinctly superior to other brands.



WARNING: Joining WIT has been known to cause excessive fun. Winnebago-Itasca Travelers (WIT) is a club for owners of Winnebago Industries motor homes. WIT is a great way to meet people and offers you:

- Caravans and rallies
- Local and state group activities
- RV travel benefits

winnebagoind.com
NYSE listing: WGO

For Sales and Service Information Contact:



©2003 Winnebago Industries, Inc.



Printed in USA

Seat belts are your most important hookup. Always buckle up.