

2007

WINNEBAGO

Journey®



Journey





WEB  SMARTSPACE

39K Hadley Square with Sierra Maple

## The Diesel Motor Home You've Been Waiting For.

The power, performance and comfort of a full-featured diesel pusher are yours in the 2007 Winnebago Journey. It all starts with a Freightliner® chassis with a 300-hp Cummins® diesel engine and an Allison® transmission. A 350-hp Caterpillar® diesel engine is standard on the 39K, and optional on the 34H and 36G. The advanced suspension system with outboard air-spring placement delivers touch-sensitive driving and precise handling. Step inside and you'll see how we incorporate our SmartSpace™ design philosophy to maximize functionality and convenience while offering more user-friendly features. Another new feature for 2007 is a full-coach water filtration system, conveniently located in the service center. Choose from three fabric options, three wood choices and three floorplans featuring slideouts with a flat-floor design for an open and spacious feel. Great looks, features, comfort and spaciousness. Add it all together and you have the Journey of your dreams.

On the cover: 39K with Red Maple full-body paint.



Euro Lounge Chair



## Feels Like Home.

Enjoy a relaxing evening at the movies from the comfort of your Journey. The entertainment center boasts a 24-inch flat-face TV, DVD player and a Home Theater Sound System. Further enhancements include an amplified antenna and Video Selection System.

Day/night pleated shades provide multiple levels of light and privacy. They cover the dual-glazed, thermo-insulated windows, which are flush-mounted for added style and thermal efficiency.

Stitchcraft custom furniture provides a number of seating options. All are available in leather for an added touch of luxury.

**WEB** Select a Key Feature

The **WEB** icon designates a Winnebago Industries Key Feature. For further in-depth information and photos, use the Search Window or click on the Key Features page at [winnebagoind.com](http://winnebagoind.com).



366 Persian Mist with Washed Maple

### Satellite TV Anywhere.

With the push of a button, the available King-Dome® in-motion satellite dish automatically finds and tracks the satellite of your choice and is compatible with all receivers and service providers.\* A 600-watt inverter (2000-watt inverter charger is available) lets you enjoy TV without shoreline or generator power.

\*Satellite TV requires a subscription. See your dealer for details.



**WEB**



### Rest Easy®

This multi-position lounge changes from a sofa to a recliner with ottoman to a comfortable bed at the touch of a button.



### Hoop-Base Chair.

You can move the hoop-base lounge chair to your favorite spot when the coach is parked (not available on the 39K).



### Multifunction Table.

Expands to accommodate four chairs and doubles as a computer desk or a dining table.





39K Hadley Square with Sierra Maple



**A Place for Everything.**

*The linen closet provides plenty of storage for extra linens, towels and bath accessories.*

**Great Room.**

The bedroom slideout creates a spacious bedroom with plenty of room for the walk-around queen bed. Before turning in for the night, watch TV on the standard 20-inch bedroom TV (a flat-faced TV comes in 36G and an LCD TV can be found in 34H and 39K). You can also add the rear stereo system featuring AM/FM radio with built in alarm clock, a CD/DVD player and an auxiliary input that allows you to listen to an MP3 player through the speakers.

In the bathroom, a skylight above the shower provides light and a spacious feel. The shower features a Moen® Posi-Temp® valve that maintains a consistent shower temperature even if water pressure fluctuates. An available shower package provides a fold-down shower seat and a handheld showerhead.



**A Good Night's Sleep.**

*The available Sleep Number® Vantage Point™ bed by Select Comfort™ lets you adjust the firmness of each side of the bed independently to your Sleep Number — The Key to a Perfect Night's Sleep.™*



**Washer/Dryer.**

*Select the available washer/dryer and enjoy the convenience of never needing to stop at the Laundromat.*



## Look What's Cooking.

Prepare a quick snack or an extravagant meal in this full-featured galley. The appliances not only look great, they offer advanced features such as sensor cook on the 30-inch microwave/convection oven with range fan.

The refrigerator features Titanium Touch stainless finish doors that have the look of stainless steel, resist fingerprints and are warmer to the touch than traditional stainless steel. As an added bonus you can use your favorite kitchen magnets. Upgrade to the four-door refrigerator/freezer for additional cold storage space (shown here with icemaker).

Solid-surface countertops and sink covers create a workspace large enough for most everything on your menu. The Moen galley faucet features a pull-out sprayer, great for easy cleanups in the sink or rinsing fresh produce.



### Neat and Tidy.

No detail is too small when it comes to creating a more user-friendly motor home. Even the wastebasket is designed with tabs that keep plastic grocery bags securely in place.



### Complete Access.

Full-extension drawer slides allow drawers to fully extend for easy access to belongings.



### BenchMark™

This innovative dinette offers innerspring cushions; easy-to-access, large storage areas; and readily converts into a comfortable bed.







**Driver Friendly.**

Designed with ergonomic styling, the dash places controls right at your fingertips, including a steering-wheel remote for the RV Radio. The available side-view cameras activated by the turn signals allow you to view the side of the coach when turning.



**Get Moving.**

The driver high-back cab seat enhances the experience behind the wheel, allowing you to adjust it with the optional six-way powered pedestal. Cut down on glare with the driver and passenger window shades and the available powered sunvisors.

Choose the Audiovox® rearview monitor for added peace of mind when backing and maneuvering. While you drive, listen to CDs, local radio or weather band updates on the RV Radio®. It has a large, easy-to-read display and simplified controls. A handheld remote lets you conveniently use the RV Radio when parked.

You can expand your listening options by adding the Sirius® Satellite Radio\* package with more than 120 digital channels. A complimentary six-month subscription is provided with this package.

\*Sirius Satellite Radio not available in Canada.



**PowerLine®**

This energy management system monitors electrical usage and automatically cycles appliances on and off to prevent power overloads.

**OnePlace®**

This complete systems center places frequently used switches, gauges and controls in one convenient location.



**Chassis Battery Disconnect Switch.**

Conveniently located in the engine compartment, the battery disconnect switch helps prevent auxiliary battery drain when storing your Journey.



**TrueAir®**

The TrueAir residential central air conditioning system with heat pump cools 40% faster and runs 10% quieter than roof airs and provides maximum cooling evenly to all areas of the motor home. The key is a Coleman-Mach® cooling unit located in the basement for a lower vehicle profile.



**TrueLevel™**

Eliminate the guesswork when it comes to tank levels with our exclusive TrueLevel holding tank monitoring system. It incorporates detector cells that determine liquid levels from outside the tank. No probes mean no more corrosion, just accurate readings time after time.



## Get Hooked Up.

Everything in the service center features color-coded labels to make hookups a snap. The heated compartments are full of well-designed features such as the QuickConnect® coupling valve and the QuickPort® service connection hatch. The QuickConnect coupling valve makes for quick and easy connections to the waste dump. QuickPort eliminates the hassle of feeding hoses through a tiny access hole while still allowing bay doors to close, even when connected to hookups. QuickPort has its own storage holster for added convenience. You'll also find a portable satellite dish hookup in the service center (satellite dish not included).

To help keep dirt where it belongs, the wash station lets you clean up before entering your coach.

With the KeyOne™ System, open the entrance door, storage compartments and dual fuel-fill doors with a single key. For added convenience, unlock the doors with the keyless remote.



### StoreMore®

The StoreMore slideout system allows exterior storage compartments to move with the slideout so you don't have to crawl on your hands and knees to access your gear.



### Ladder.

Our folding ladder gives you access to things up high and then easily tucks into a customized enclosure so it's always close at hand. (Available on all models.)



### Storage Pullout Tray.

Provides quick access to stored items. Available on the 34H and 36G.



### Entertainment Outside.

The exterior entertainment center features an AM/FM stereo, CD player, speakers, 12-volt powerpoint, 110-volt outlet and TV jack.



Service Center



Dash Pad



Entrance Door

### Hydraulic Leveling Jacks.

New for 2007 is our exclusive switching system that allows you to control your jacks from the driver's seat, entrance door or service center. Leveling your motor home has never been easier.



Hadley Square



Persian Mist



Sausalito



A-Main Fabric  
B-Carpet  
C-Accent



Concert Cherry

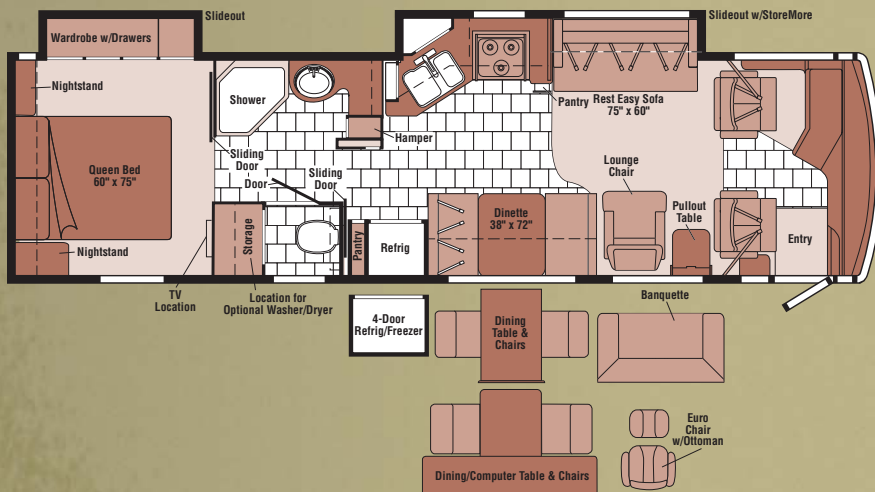


Sierra Maple

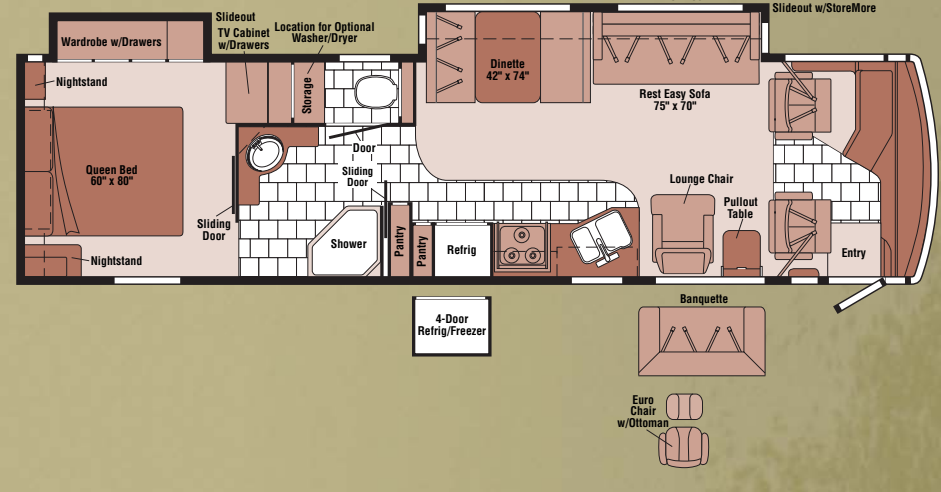


Washed Maple

34H



36G





**Standard Graphics**



**Dark Titanium Metallic**

**Full-Body Paint**



**Red Maple**

**Full-Body Paint**

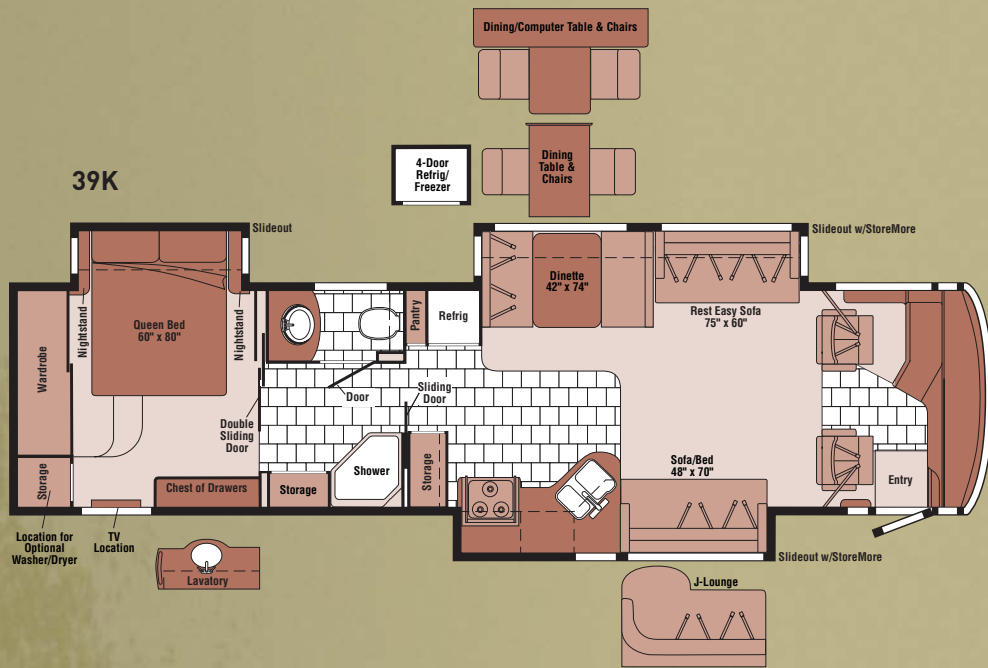


**Sand Dune**

**Full-Body Paint**



**Slate**



**Ride and Handling**

The Winnebago Journey is exclusively offered on a Freightliner® chassis, specifically designed and created for RV application. Freightliner has a well-known reputation for providing top-quality chassis and vehicles. Front and rear suspensions, designed to work as an integrated system, provide the surest, smoothest ride in the industry. And “bump steer”? With Freightliner, it’s a thing of the past. Even when your motor home comes in contact with a pothole, there’s virtually no steering-wheel motion in reaction to the suspensions’ movement. Top that with a network of more than 400 diesel service locations in the United States and Canada, many open 24 hours a day 7 days a week. That means less downtime and quick return to your travels.



THE LEADER AT EVERY TURN™



Note: Dimensions shown are for sleeping space only and may vary due to styling differences. Dashed lines denote overhead storage areas.



WEIGHTS & MEASURES	34H	36G	39K
Length	34'9"	36'5"	39'3"
Exterior Height <sup>1</sup>	11'7" <sup>A</sup> /11'8" <sup>B</sup>	11'7" <sup>A</sup> /11'7" <sup>B</sup>	11'9" <sup>C</sup>
Exterior Width <sup>2</sup>	8'5.5"	8'5.5"	8'5.5"
Exterior Storage <sup>3</sup> (cu. ft.)	99.4	118.7	98.7
Awning Length	18'	20'	20'
Interior Height	6'8"	6'8"	6'8"
Interior Width	8'.5"	8'.5"	8'.5"
Freshwater Capacity w/Heater <sup>4</sup> (gal.)	92	92	92
Holding Tank Capacity – Black/Gray <sup>4</sup> (gal.)	62/54	54/54	54/54
LP Capacity <sup>5</sup> (gal.)	31	31	31
Fuel Capacity (gal.)	90	90	90
GCWR <sup>6</sup> (lbs.)	33,000 <sup>A</sup> /37,910 <sup>B</sup>	33,000 <sup>A</sup> /37,910 <sup>B</sup>	39,410 <sup>C</sup>
GVWR (lbs.)	27,910 <sup>A</sup> /27,910 <sup>B</sup>	27,910 <sup>A</sup> /27,910 <sup>B</sup>	29,410 <sup>C</sup>
GAWR – Front (lbs.)	10,410 <sup>A</sup> /10,410 <sup>B</sup>	10,410 <sup>A</sup> /10,410 <sup>B</sup>	10,410 <sup>C</sup>
GAWR – Rear (lbs.)	17,500 <sup>A</sup> /17,500 <sup>B</sup>	17,500 <sup>A</sup> /17,500 <sup>B</sup>	19,000 <sup>C</sup>
Wheelbase	208" <sup>A</sup> /208" <sup>B</sup>	228" <sup>A</sup> /228" <sup>B</sup>	262" <sup>C</sup>

Standard - S Optional - O	34H	36G	39K
<b>AUTOMOTIVE/CHASSIS</b>			
<b>A - Freightliner® Chassis Cummins®</b> – ISB 5.9L turbo-charged diesel, 300-hp, rear radiator, Allison® 5-speed electronic 2500 MH transmission, NeWay® front & rear air suspension, 160-amp. alternator, exhaust brake, 4-wheel ABS, <b>Wheel Liners</b> stainless steel	S	S	
<b>B - Freightliner Chassis Caterpillar®</b> – 7.2L turbo-charged diesel, 350-hp, rear radiator, Allison 6-speed electronic 3000 MH transmission, NeWay front & rear air suspension, 160-amp. alternator, exhaust brake, 4-wheel ABS, <b>Wheels</b> stylized aluminum	O	O	
<b>C - Freightliner Chassis Caterpillar</b> – 7.2L turbo-charged diesel, 350-hp, rear radiator, Allison 6-speed electronic 3000 MH transmission, NeWay front & rear air suspension, 160-amp. alternator, exhaust brake, 4-wheel ABS, <b>Wheels</b> stylized aluminum (Full Body-Paint Only)			S
<b>Leveling Jacks</b> HWH® hydraulic, automatic, with 3-way switching system, <b>Steering Wheel</b> vinyl wrapped, <b>Trailer Hitch</b> <sup>4</sup> 10,000-lb. drawbar/500 lbs. maximum vertical tongue weight & 7-pin wiring	S	S	S
<b>CAB AREA &amp; DRIVER CONVENIENCES</b>			
<b>C.B. Wire Prep</b> 12-volt DC power supply, <b>Cab Seats (Fabric)</b> armrests, lumbar support, multi-adjustable slide/recline & swivel, <b>Console Center Cabinet</b> , <b>Cruise Control</b> , <b>Exhaust Brake Switch</b> , <b>Map Lights</b> , <b>Monitor System</b> rearview b/w monitor w/single camera & 1-way audio, Audiovox®, <b>Power Door Lock</b> keyless entry, <b>Powerpoints</b> 12-volt DC, <b>Shades</b> cab windows, light filtering, <b>Sliding Stepwell Cover Panel</b> powered, <b>Sunvisors</b> , <b>Window (Driver)</b> full-slider w/screen, dual-glazed/thermo-insulated, <b>Window (Passenger)</b> partial-slider w/screen, dual-glazed/thermo-insulated, <b>Windshield Wipers</b> intermittent, pantographic arms	S	S	S

Standard - S Optional - O	34H	36G	39K
<b>Cab Seat</b> 6-way power assist (driver), <b>Cab Seats (Leather)</b> w/vinyl surround, <b>Cab Seat</b> passenger seat w/footrest, <b>Defroster Fans</b> auxiliary 2-speed w/instrument panel switch, <b>GPS Navigation System</b> , <b>Sunvisors</b> powered, <b>Video Camera System</b> side-mounted cameras	O	O	O
<b>ENTERTAINMENT</b>			
<b>Entertainment Center (Exterior)</b> DC receptacle, AC duplex receptacle, AM/FM radio w/CD player & remote, TV jack, radio antenna, speakers, lockable compartment, <b>Home Theater Sound System</b> amplifier, DVD, receiver, speakers (5), subwoofer, <b>RV Radio® (Cab)</b> AM/FM/stereo/CD, weather band, remotes, roof-mounted flexible rubber antenna, speakers (4), <b>Radio Power Switch</b> main/auxiliary battery, <b>Satellite System Ready</b> , <b>Telephone</b> input & interior jacks, <b>TV (rear)</b> AC 20" color stereo w/remote, <b>TV (front)</b> AC 24" color w/remote, <b>TV Enhancement Package</b> antenna (amplified), interior jack(s), coax wiring, cable input, exterior jack, <b>Video Selection System</b>	S	S	S
<b>Compact Multi-disc Changer</b> remote, <b>Satellite Dish Antenna</b> RV digital, automatic, <b>Satellite Radio</b> Sirius®, antenna, receiver, remote & a 6-month prepaid subscription (NA in Canada), <b>Satellite Dish</b> RV digital, in-motion, King-Dome®, <b>Stereo System</b> (rear) AM/FM/CD/DVD player, front aux. input, front headphone jack, alarm clock	O	O	O
<b>INTERIOR</b>			
<b>Ceiling</b> vinyl, <b>Countertops</b> solid-surface, galley & bath, <b>Lights</b> ceiling, wall switches, incandescent, galley, bath, bedroom, <b>Light</b> decorative, dinette, <b>Lights</b> fluorescent, dinette, bath, hallway, lounge, wall switches, <b>Lights</b> reading, lounge, bedroom area, <b>Mini Blinds</b> galley & bath area, <b>Roof Vent</b> bath area, powered fan, insulated, <b>Roof Vent</b> galley, powered ventilator fan, insulated, <b>Shade</b> front wraparound, pleated w/wands, <b>Shades</b> pleated, day/night w/blackout, lounge, dinette, & bedroom areas, <b>Windows</b> dual-glazed/thermo-insulated/flush-mounted	S	S	S



Standard - S	Optional - O	34H	36G	39K
<b>FURNITURE</b>				
<b>BenchMark™ Full Comfort Dinette (Fabric)</b> access to storage below, child-seat tether anchor		S	S	S
<b>Banquette (Fabric or Leather)</b> throw pillows, access to storage below		O	O	
<b>Chair Lounge (Fabric)</b> hoop-base, recline/rocker/swivel/slide, footrest, pullout table		S	S	
<b>Chair Lounge (Leather)</b> hoop-base, recline/rocker/swivel/slide, footrest, pullout table		O	O	
<b>Chair Lounge (Leather)</b> Euro Recliner w/ottoman		O	O	
<b>Dining Table &amp; Chairs</b> freestanding [2], folding [2]		O	O	O
<b>Dining/Computer Table &amp; Chairs</b> freestanding [2], folding [2]		O	O	O
<b>J-Lounge (Leather)</b> access to storage below, throw pillows				O
<b>Rest Easy® Multi-Position Lounge (Fabric)</b> 75" x 70", dual trundles, throw pillows			S	
<b>Rest Easy Multi-Position Lounge (Leather)</b> 75" x 70", dual trundles, throw pillows			O	
<b>Rest Easy Multi-Position Lounge (Fabric or Leather)</b> 75" x 60", dual control, throw pillows		O	O	O
<b>Rest Easy Multi-Position Lounge (Fabric)</b> 75" x 60", throw pillows		S		S
<b>Sofa (Fabric)</b> access to storage below, throw pillows				S
<b>GALLEY</b>				
<b>Faucet</b> single-control w/pull-out sprayer, Moen®, <b>Microwave/Convection Oven</b> range fan exterior vent, sensor cook feature, residential 30", stainless steel, Sharp®, <b>Pantry, Range Cover</b> solid-surface material, <b>Range Top</b> 3-burner, recessed, sealed burners, piezo ignition, one high-output burner, Amana®, storage below, <b>Refrigerator/Freezer</b> large double-door, Titanium Touch stainless finish, Norcold®, <b>Sink Covers</b> countertop material, <b>Water Purification System</b> Everpure®		S	S	S
<b>Storage Cabinet</b> large roll-out island storage bin				S
<b>Refrigerator/Freezer</b> large double-door w/icemaker or four-door w/icemaker, Titanium Touch stainless finish, Norcold		O	O	O
<b>BATH</b>				
<b>Cabinet</b> lavatory, <b>Cabinet(s)</b> linen/storage, <b>Faucet (Lavatory)</b> single-control, <b>Faucet (Shower)</b> single-control, fixed showerhead, Moen Posi-Temp®, <b>Light</b> shower, <b>Lights</b> makeup		S	S	S
<b>Shower Package</b> fold-down shower seat, handheld showerhead		O	O	O
<b>BEDROOM</b>				
<b>Bed</b> queen, Serta®, innerspring w/underbed storage (NA39K), bedspread, pillows, headboard		S	S	S
<b>Sleep Number®</b> queen-size mattress by Select Comfort™		O	O	O
<b>EXTERIOR</b>				
<b>Awning</b> patio, manual, <b>Awning Rails</b> w/rain gutters, <b>Door</b> entrance w/screen door, deadbolt lock, keyless entry, <b>Entrance Door Step</b> single, electric w/doorjamb switch, <b>Ladder, Light</b> porch, <b>Light</b> under hood, <b>Light</b> service, driver's side, <b>Fuel-fill Doors</b> locking, <b>Mirrors</b> electric remote w/defrost, turn signal, <b>Mudflaps</b> rear, <b>Receptacle</b> AC duplex, <b>Sidewall Skin</b> 1-piece smooth fiberglass, high-gloss, <b>Storage Compartments</b> smooth valance panels, trunk liner, gas struts, TriMark® KeyOne™ System, paddle latch, lights		S	S	S

Standard - S	Optional - O	34H	36G	39K
<b>Air Horns</b> roof-mounted, <b>Awning</b> entry door, box style, manual, <b>Awning Package</b> electric, patio, wind sensor & remote, full-body paint, <b>Front Protective Mask</b> w/full-body paint only, <b>Mud Guard</b> full-width, rear, <b>Step Ladder</b> folding, StoreMore® storage compartment		O	O	O
<b>Compartment Tray(s)</b> slideout		O	O	
<b>SYSTEMS</b>				
<b>HEATING/AC - Automotive Heater/Air Conditioner</b> blend air system, <b>Furnace</b> 40,000 BTU, <b>PowerLine®</b> energy management system, <b>TrueAir®</b> residential central air conditioning w/heat pump		S	S	S
<b>ELECTRICAL - Auxiliary Start Circuit, Batteries (Coach)</b> deep-cycle [2], <b>Battery (Chassis)</b> disconnect system, <b>Battery Charge Control</b> automatic dual, <b>Electrical Distribution System</b> AC & DC breaker panels, <b>Electrical System Display Center, Generator</b> 8,000-watt, Onan® Quiet Diesel™, <b>Generator/Shoreline Automatic Changeover Switch, Inverter</b> DC/AC, 600-watt, <b>OnePlace® Systems Center</b> wall-mounted, courtesy light, battery digital voltmeter, PowerLine energy management display, generator hourmeter gauge, generator start/stop switch, heating & A/C thermostat, holding tank levels, LP tank level, solar panel/battery charger light, water heater switch, water heater light & pilot indicator light, water pump switch, water tank level, <b>Power Cord</b> 50-amp., <b>PowerLine</b> energy management system, <b>Service Center (Electrical)</b> cable input, power cord, shoreline/generator automatic changeover switch, telephone input, portable satellite dish hookup, <b>Solar Panel</b> 10-watt battery charger		S	S	S
<b>Batteries (Coach)</b> deep-cycle [3], <b>Inverter/Charger</b> DC/AC, 2,000-watt w/remote panel		O	O	O
<b>PLUMBING/LP - Drain</b> 1½" water tank, <b>Service Center (Drainage)</b> drainage valves, holding tank flushing system, 10' sewer hose w/QuickConnect® coupling valve, QuickPort® service connection hatch, <b>Service Center (Water)</b> city water diverter fill, drain for freshwater system, exterior wash station w/pump switch, QuickPort service connection hatch, <b>Tank</b> flushing system, black tank only, <b>Tank</b> holding, heated compartment, <b>Tank</b> LP, permanent mount w/gauge, <b>TrueLevel™</b> holding tank monitoring system, <b>Water Heater</b> 10-gallon electronic ignition, LP gas/120 VAC w/motoraid, <b>Water Hookup</b> city, <b>Water Pump</b> demand, <b>Water Tank Fill</b> pressurized city hookup w/diverter valve, locking door, <b>Water System Filtration Package</b> replaceable filter, filter housing, wrench, <b>Water System Winterization Package</b> water heater bypass valve & siphon tube		S	S	S
<b>Washer/Dryer Combination</b>		O	O	O
<b>SAFETY</b>				
<b>Assist Bars</b> interior, <b>Assist Handle</b> exterior, <b>Bumpers</b> front & rear, <b>Child-Seat Tether Anchor, Detectors/Alarms</b> LP leak, smoke, carbon monoxide, <b>Fire Extinguisher</b> 10 BC, <b>Fog Lamps, Ground Fault Interrupter, Lights</b> daytime running, <b>Light</b> high-mount brake-lamp, <b>Lights</b> courtesy w/wall switches, <b>Seat Belts</b> cab, 3-point, <b>Seat Belts</b> lap (in selected areas), <b>Window</b> escape, <b>Windshield</b> laminated safety glass		S	S	S
<b>WARRANTY*</b>				
<b>12-month/15,000-mile basic limited warranty</b> <sup>5</sup> , <b>36-month/36,000-mile limited warranty on structure</b> <sup>6</sup> , <b>10-year limited parts &amp; labor warranty on roof skin</b> <sup>8</sup>		S	S	S

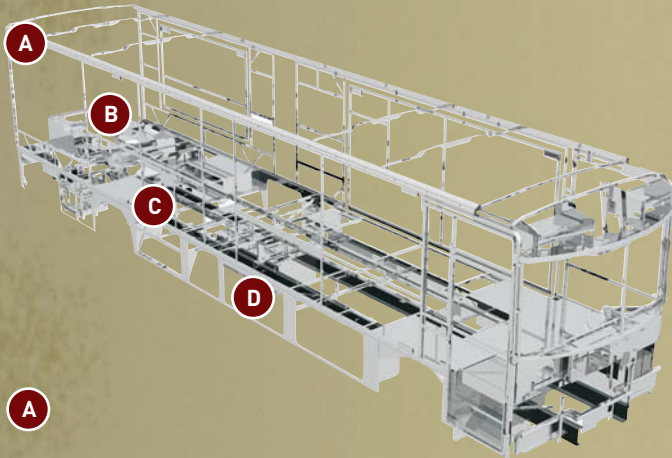
- The height of each model is measured to the top of the tallest standard feature and is based on the curb weight of a typically equipped unit. The actual height of your vehicle may vary by several inches depending on chassis or equipment variations. Please check with your dealer for further information.
- Journey floorplans feature a wide-body design – over 9½ inches. In making your purchase decision, you should be aware that some states restrict access on some or all state roads to 9½ inches in body width. Before making your purchase decision, you should confirm the road usage laws in the states of interest to you.
- The load capacity of your motor home is designated by weight, not by volume, so you cannot necessarily use all available space when loading your motor home.
- Capacities are based on measurements prior to tank installation. Slight capacity variations can result due to installation applications.

- Capacities shown are tank manufacturer's listed water capacity [W.C.]. Actual filled LP capacity is 80% of listing due to overfilling prevention device on tank.
- Actual towing capacity is dependent on your particular loading and towing circumstances, which includes the GVWR, GAWR and GCWR, as well as adequate trailer brakes. Please refer to the Operator's Manual of your vehicle for further towing information.
- See separate chassis warranty.
- See your dealer for complete warranty information. Not all items available in combination. See dealer for details. NA - Not Available.
- Winnnebago Industries' continuing program of product improvement makes specifications, equipment, model availability and prices subject to change without notice. Comparisons to other motor homes are based on the most recent information available.





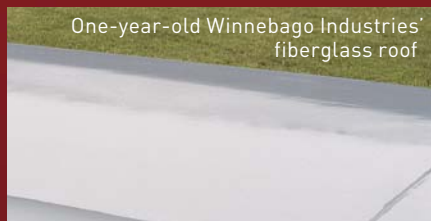
**A**



**SUPERSTRUCTURE®** is the term given to Winnebago Industries' structural motor home design and construction. Rather than a single component, it is the culmination of design integration that incorporates steel and aluminum substructures; composite-design laminated floor risers; interlocking joint technology; and Thermo-Panel® floor, roof and sidewalls to form a high-strength, durable vehicle body.

Thermo-Panel manufacturing combines a durable exterior panel with welded aluminum support substructures. The substructures are embedded in a high-density, block-foam insulation core to create a strong, durable, yet lightweight sidewall. Just another Winnebago Industries invention.

- A** Interlocking joint construction utilizes advanced extruded aluminum structural components to create integrated floor-to-sidewall and sidewall-to-roof joints. This design effectively distributes the weight of the walls and roof, making a stronger and more durable body than competitor designs that rely on screws to carry the weight.
- B** The foundation substructure assembly is precision-aligned to maximize strength and cross-coach support as well as durability.
- C** Laminated risers feature a welded aluminum core for improved strength and provide a stable base for the floor structure and storage compartments.
- D** Critical steel components are treated using an advanced electrodeposition coating process that provides superior corrosion protection.



One-year-old Winnebago Industries' fiberglass roof



One-year-old competitor's rubber roof

**BUILT TO A HIGHER STANDARD.**

The 2007 Journey features a crowned, one-piece fiberglass roof skin backed with a 10-year limited parts-and-labor roof skin warranty. Fiberglass offers superior strength, attractiveness and durability compared to rubber roofs found on many competitive models. Over time, rubber roofs are susceptible to chalking, streaking and degradation, and have less puncture and tear resistance than fiberglass.



**Take a Tour** We're proud of our process, our state-of-the-art facilities and the people who make Winnebago Industries number one. We invite you to visit our factory in Forest City, Iowa, for a firsthand look at the dedication and technology behind every motor home we build.



**Recognized Quality** The Recreation Vehicle Dealer Association annually rates RV manufacturers and awards the Quality Circle award to manufacturers who provide exceptional products, service and support. Winnebago Industries is proud to be the only manufacturer to receive this award every year since its inception.



**Committed to Service** We back our motor homes with the industry's best service after the sale.

- 12-month/15,000-mile basic limited warranty
- 36-month/36,000-mile limited warranty on structure
- Standard 10-year limited parts-and-labor roof skin warranty
- Complimentary 24-hour roadside assistance program
- TripSaver Fast Track Parts. TripSaver guarantees that in-stock warranty parts ship directly to your dealer within 24 hours.
- National dealer service network

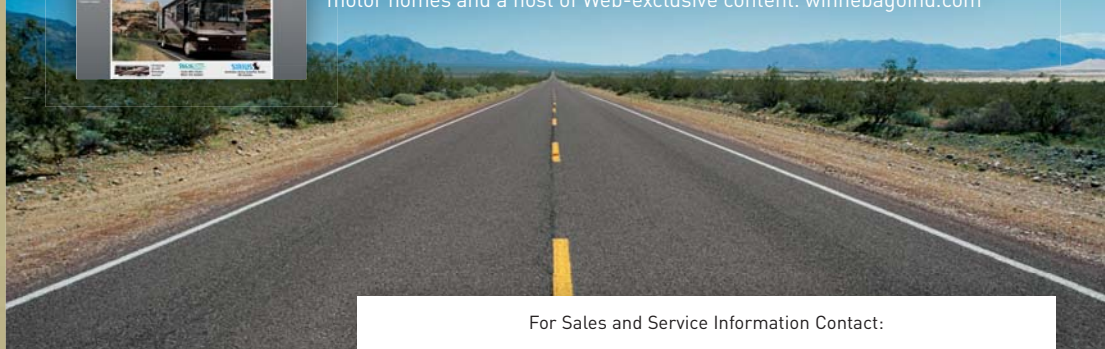


**WIT Club** Winnebago owners are like family. Joining the Winnebago-Itasca Travelers is a great way to meet and travel with other Winnebago enthusiasts. Members enjoy:

- Caravans and rallies
- Local and state group activities
- RV travel benefits



**Visit the Web** Visit us on the Web for more information on all of our motor homes and a host of Web-exclusive content. [winnebagoind.com](http://winnebagoind.com)



For Sales and Service Information Contact:

Built proudly by



NYSE listing: WGO