

# OMNI<sup>®</sup>



COSTA MESA



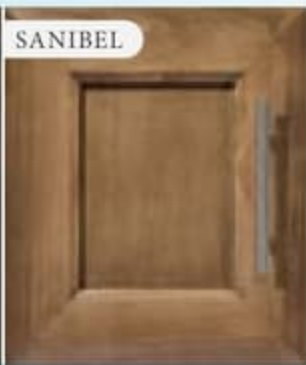
LAKE POWELL



NAPA VALLEY



REGATTA



SANIBEL



FLOORING

XG32



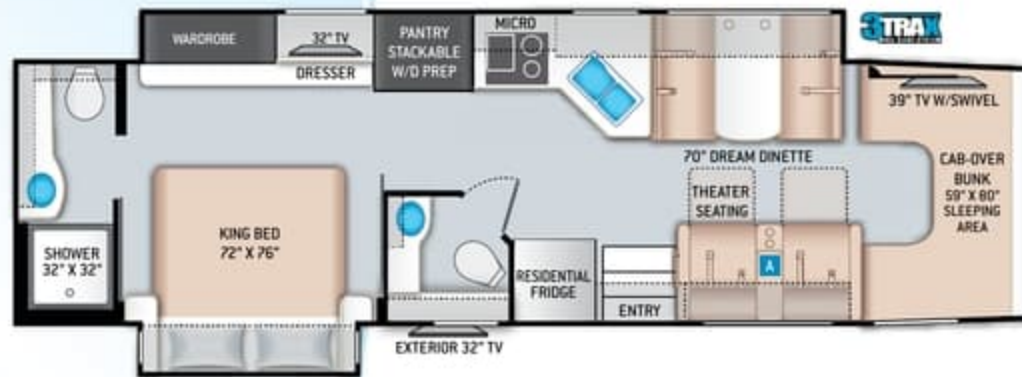
OPTIONAL SOFA

SV34



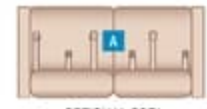
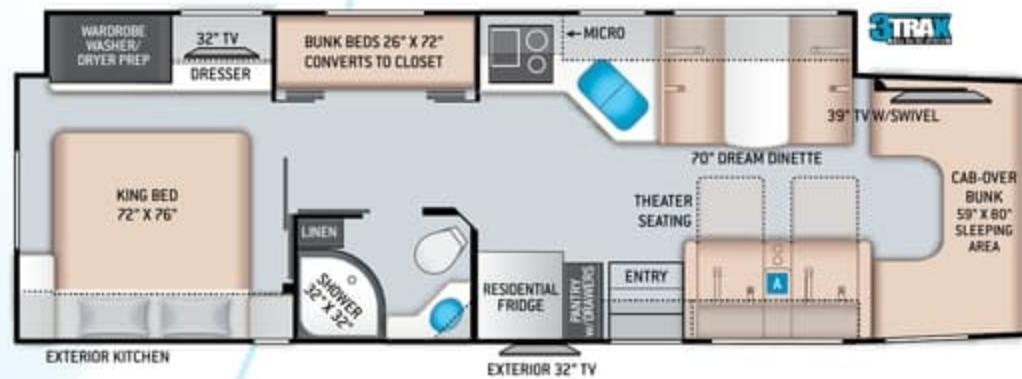
OPTIONAL THEATER SEATING

BT36



OPTIONAL SOFA

RS36



OPTIONAL SOFA

# OMNI<sup>®</sup>



COSTA MESA



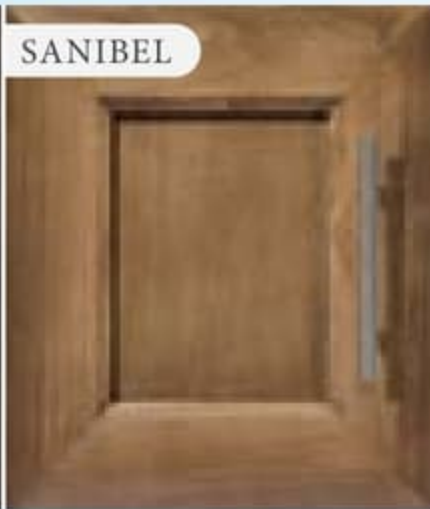
LAKE POWELL



NAPA VALLEY



REGATTA

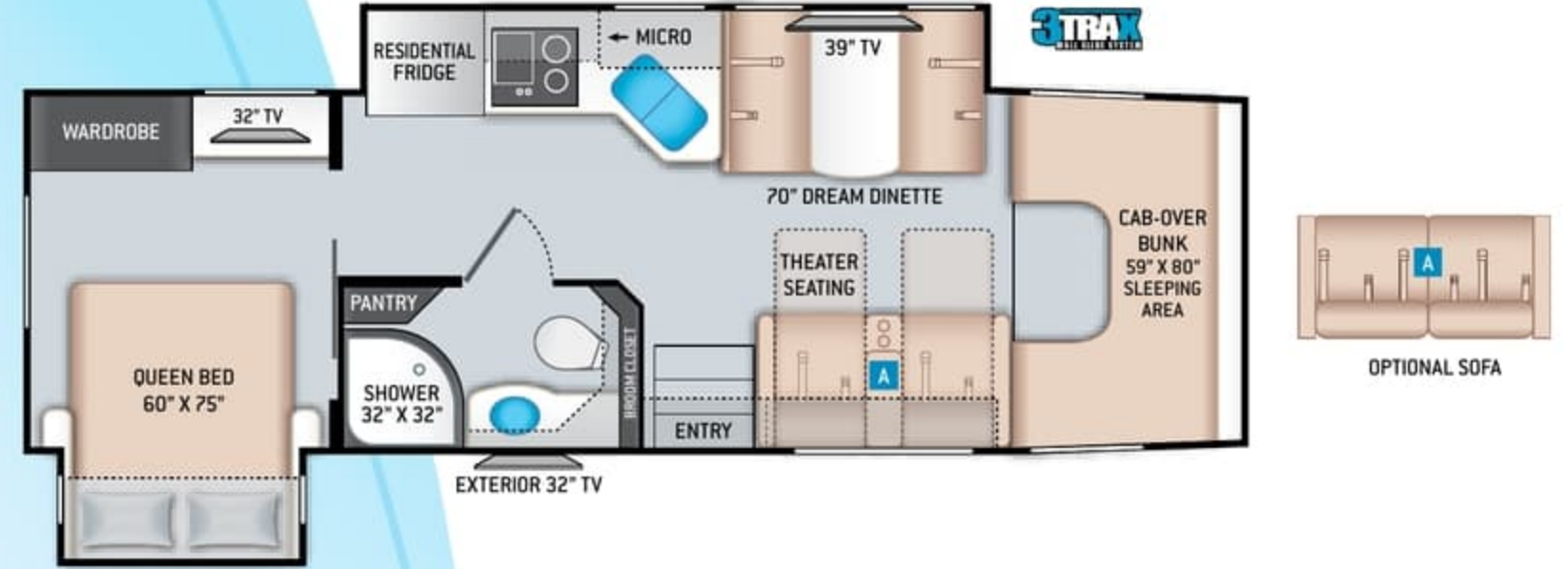


SANIBEL

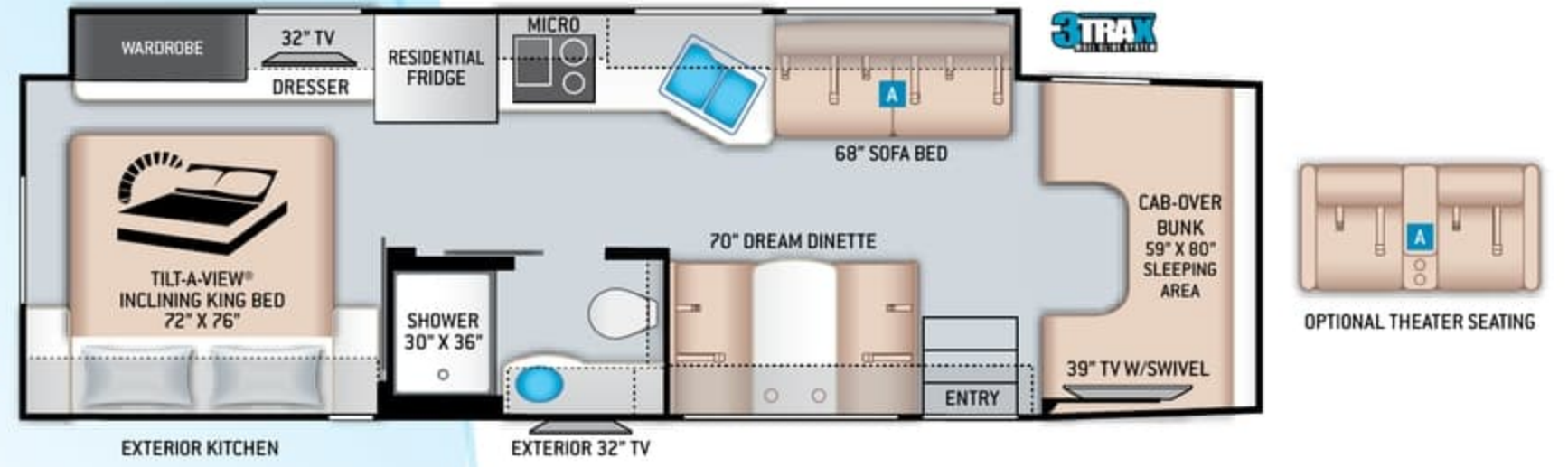


FLOORING

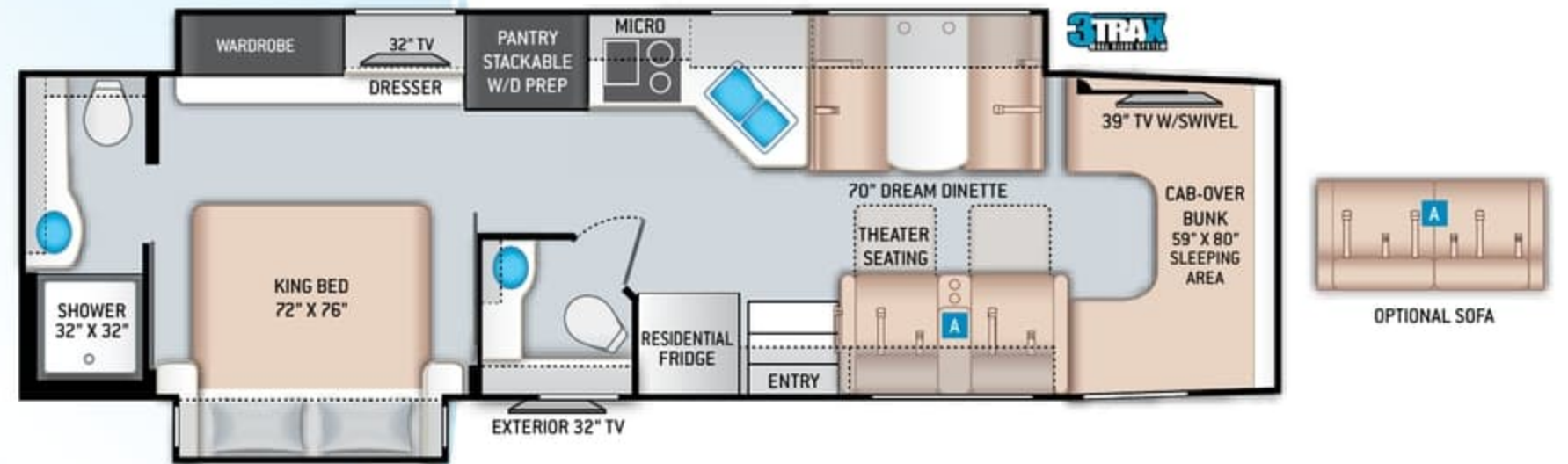
XG32



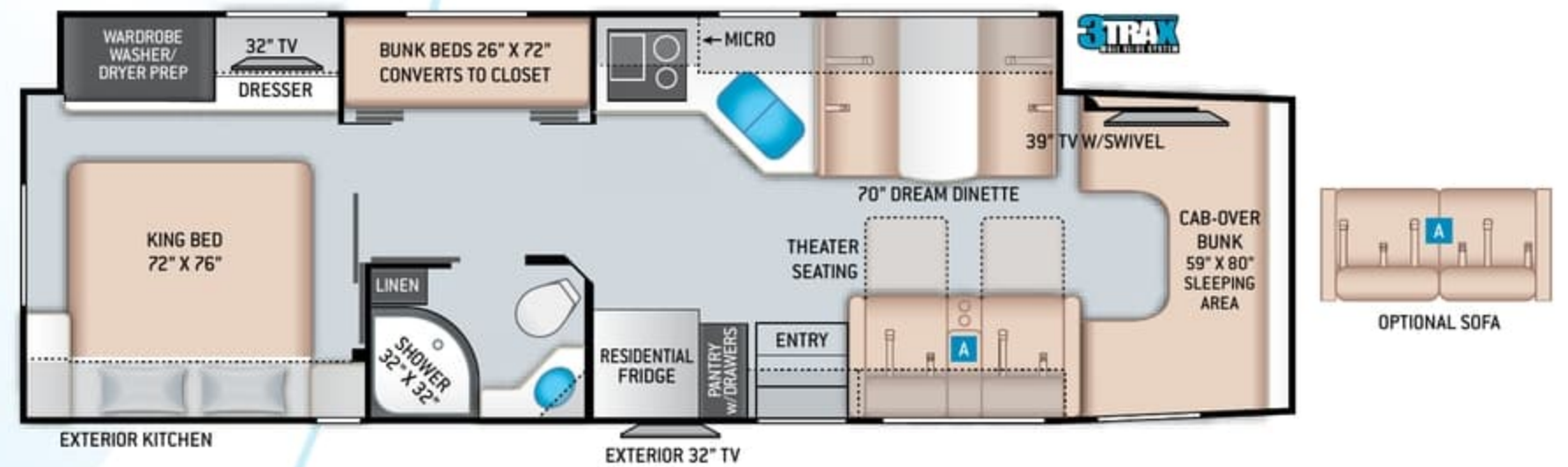
SV34



BT36



RS36



# Featured Highlights

## CONSTRUCTION & EXTERIOR

- Ford® Chassis - F550 - Power Stroke™ 4 X 4 Turbo Diesel / 6.7L Power Stroke V8 / 330HP 825 lb-ft Torque (XG32 & SV34)
- Ford® Chassis - F600 - Power Stroke™ 4 X 4 Turbo Diesel / 6.7L Power Stroke V8 / 330HP 825 lb-ft Torque (BT36 & RS36)
- Welded Tubular Steel Floor
- Welded Tubular Aluminum Roof & Sidewall Cage Construction
- Premium One-Piece Crossflex™ Roof
- Full-Body Paint Package with Gel Coated Sidewalls
- Invisible Front Paint Protection
- Automatic Leveling Jacks with Touchpad Controls
- Rotocast Storage Compartments
- Flush Mount Radius Luggage Doors
- Power Patio Awning with Integrated LED Lighting
- Powered Sky View Shade in Cab Overhead
- Slideout Room Awnings
- Roof Ladder
- Electric Entry Step
- Automatic Courtesy Lights Over Cab Entry
- Frameless Windows
- 10,000-lb. Trailer Hitch with 7-pin Round Connector (XG32 & SV34)
- 12,000-lb. Trailer Hitch with 7-pin Round Connector (BT36 & RS36)

## AUTOMOTIVE & COCKPIT

- SYNC® 3 Enhanced Voice Recognition Communications and Entertainment System
- 8" Color LCD Capacitive Touchscreen with Swiping Capability, 911 Assist, AppLink and Smart-Charging USB Ports and Navigation
- FordPass™ Connect 4G Wi-Fi Modem

- Heated/Remote Exterior Mirrors
- Rearview Mirror with Back-up Monitor
- Side View Camera System
- Emergency Engine Start Switch
- Adjustable Power Driver & Manual Passenger Captain's Chairs with Center Armrests
- Adjustable Accelerator & Brake Pedals
- Power Windows & Door Locks
- Audible Lane Departure Warning & Pre-Collision Assist with Automatic Emergency Braking (AEB) and Forward Collision Warning
- Cruise Control
- Tilt Steering Wheel
- Map Light
- Fog Lamps
- Keyless Entry System
- All Weather Cab Floor Mats
- Privacy Curtain
- Fiberglass Running Boards
- Valve Stem Extenders
- Aluminum Wheels

## INTERIOR

- Residential Linoleum Throughout
- 84" Interior Ceiling Height
- Soft Touch Vinyl Ceiling
- LED Lighting
- Ceiling Ducted Air Conditioning System
- Hardwood Veneer Paneling in Select Areas
- Satin Finish Cabinetry with Solid Wood Flat Panel Cabinet Doors & Nickel Finish Hardware
- Manual Roller Shades - Day/Night in Living Area & Night Shades in the Bedroom
- Leatherette Dream Dinette® Booth with Cup Holders
- Pressed Laminate Countertops in Select Areas

- Leatherette Theater Seating with Incliners & Footrests (XG32, BT36 & RS36)
- Leatherette Sofa (SV34)

## INTERIOR OPTION

- Leatherette Sofa (XG32, BT36 & RS36)
- Leatherette Theater Seating with Incliners & Footrests (SV34)
- Single Child Safety Tether in Dinette

## KITCHEN

- Double Door Refrigerator
- 2-Burner High-Output Gas Range with Single Induction Cooktop
- Stainless Steel 30" Over-the-Range Convection Microwave Oven
- Solid Surface Countertops & Sink Covers
- Kitchen Countertop LED Accent Lighting
- Decorative Tile Backsplash
- Stainless Steel Double Bowl Sink with Single Handle Faucet & Pull-Down Sprayer
- Pop-Up Countertop Outlet
- Pantry (XG32, BT36 & RS36)
- Waste Basket
- 12-volt High Capacity Power Vent with Cover

## BEDROOM & BATHROOM

- King Size Bed (SV34 & BT36)
- Queen Size Bed (XG32 & RB34)
- Tilt-A-View® Inclining Bed Mechanism (SV34)
- Headboard, Bedspread & Pillow Shams
- Bedroom 110-volt Outlet on Inverter for CPAP Machine
- Bunk Beds Convert to Closet (RS36)
- Shower with Obscure Glass Door
- Stainless Steel Bathroom Sink

- Foot Flush Porcelain Toilet (BT36)
- Macerator Toilet
- Power Bath Vent

## ENTERTAINMENT

- 39" TV on Manual Swivel in Cab-Over (SV34, BT36 & RS36)
- 39" LED TV in Living Area (XG32)
- 32" TV in Bedroom
- TV Prep in Bunk Beds (RS36)
- Tablet Holder and USB Charge Port in Bunk Bed (RS36)
- Exterior 32" TV on Swivel Bracket with Bluetooth® Built-in Sound Bar and Radio
- Bluetooth® Coach Radio System in Bedroom
- Cable TV Ready
- Digital TV Antenna
- Satellite Mounting Backer in Roof
- Winegard® Connect™ 2.0 WiFi / 4G / TV Antenna
- USB Charging Ports - Bedroom & Living Area
- Exterior Kitchen with Refrigerator & Sink (SV34 & RS36)

## ELECTRICAL & PLUMBING

- Onan® RV QD 6000 Diesel Generator
- Automatic Generator Start
- 50-amp Detachable Shoreline Power Cord
- Automatic Transfer Switch with Power Protection
- 1800-watt Inverter
- Dual Roof Air Conditioners
- Dual Auxiliary House Batteries with Battery Tray - Holds up to Four (4) Batteries
- Battery Disconnect Switch
- 100-watt Solar Charging System with Solar Controller

- Rapid Camp+® Multiplex Wiring Control System with 7" Touchscreen
- Whole Coach Water Filtration System
- Tankless Water Heater
- Water Heater Bypass System
- Enclosed & Heated Holding Tanks (XG32 & RS36)
- Enclosed Holding Tanks with Heat Pads (SV34 & BT36 Rear Tank Only)
- Black Tank Flush System
- 360° Siphon® RV Holding Tank Vent Cap
- Exterior LP Connection
- Washer/Dryer Combo Prep (RS36)
- Stackable Washer/Dryer Prep (BT36)
- Outside Shower

For a complete listing of available features visit [thormotorcoach.com/omni](http://thormotorcoach.com/omni).

Use your phone's camera to find out more information.



Just scan the code!

	XG32	SV34	BT36	RS36
Chassis	Ford F550	Ford F550	Ford F600	Ford F600
Gross Vehicle (GVWR)	19,500	19,500	22,000	22,000
Gross Combined (GCWR)	40,000	40,000	43,000	43,000
Wheel Base	227"	249"	267"	267"
Exterior Length (w/o ladder)	33'-8"	35'-9"	37'-9"	37'-9"
Exterior Height (w/AC)	12'-6"	12'-6"	12'-7"	12'-7"
Exterior Width (w/o mirrors)	99"	99"	99"	99"
Interior Height (living area)	84"	84"	84"	84"
Awning Size	14'	20'	14'	20'
Fuel (gal)	28F / 40R	28F / 40R	28F / 40R	28F / 40R
LPG (lbs)	68.2	68.2	68.2	68.2
Fresh/Waste/Gray Water (gal)	75 / 40 / 47	65 / 40 / 40	75 / 40F - 31R / 40	75 / 40 / 40
Water Heater (gal)	Tankless	Tankless	Tankless	Tankless
Furnace (BTUs)	30,000	30,000	30,000	30,000
Exterior Storage Capacity (cu. ft.)	78	78	83	74
Hitch Weight Rating (lbs)	10,000	10,000	12,000	12,000



Made to fit.

**IMPORTANT-PLEASE READ:** This brochure reflects product design, fabrication, material, components and specifications at the date of printing, which date is disclosed below. Please visit us online at [ThorMotorCoach.com](http://ThorMotorCoach.com) or consult with your selling dealership for the latest in standards, options, specification and technical information. Photographs in the brochure may depict optional equipment or may only be available in certain floor plans. Components, appliances and the chassis may have been manufactured in a calendar year before the vehicle's designated model year. All capacities are approximate. The actual length of the vehicle may differ from that indicated in the brochure due to variances in the manufacturing processes and/or installed components. All dry weights are based on standard model features and do not include optional features or equipment. Component part and appliance manufacturers issue limited warranties covering portions of the vehicle not covered under the limited warranty we issue. Copyright Thor Motor Coach, Inc. © OH 01/07/2022

P.O. Box 1486, Elkhart, IN 46515 Sales Department: 800.860.5658

[thormotorcoach.com/omni](http://thormotorcoach.com/omni)



Go RVing

# Featured Highlights

## CONSTRUCTION & EXTERIOR

- Ford® Chassis - F550 - Power Stroke™ 4 X 4 Turbo Diesel / 6.7L Power Stroke V8 / 330HP 825 lb-ft Torque (XG32 & SV34)
- Ford® Chassis - F600 - Power Stroke™ 4 X 4 Turbo Diesel / 6.7L Power Stroke V8 / 330HP 825 lb-ft Torque (BT36 & RS36)
- Welded Tubular Steel Floor
- Welded Tubular Aluminum Roof & Sidewall Cage Construction
- Premium One-Piece Crossflex™ Roof
- Full-Body Paint Package with Gel Coated Sidewalls
- Invisible Front Paint Protection
- Automatic Leveling Jacks with Touchpad Controls
- Rotocast Storage Compartments
- Flush Mount Radius Luggage Doors
- Power Patio Awning with Integrated LED Lighting
- Powered Sky View Shade in Cab Overhead
- Slideout Room Awnings
- Roof Ladder
- Electric Entry Step
- Automatic Courtesy Lights Over Cab Entry
- Frameless Windows
- 10,000-lb. Trailer Hitch with 7-pin Round Connector (XG32 & SV34)
- 12,000-lb. Trailer Hitch with 7-pin Round Connector (BT36 & RS36)

## AUTOMOTIVE & COCKPIT

- SYNC® 3 Enhanced Voice Recognition Communications and Entertainment System
- 8" Color LCD Capacitive Touchscreen with Swiping Capability, 911 Assist, AppLink and Smart-Charging USB Ports and Navigation
- FordPass™ Connect 4G Wi-Fi Modem

- Heated/Remote Exterior Mirrors
- Rearview Mirror with Back-up Monitor
- Side View Camera System
- Emergency Engine Start Switch
- Adjustable Power Driver & Manual Passenger Captain's Chairs with Center Armrests
- Adjustable Accelerator & Brake Pedals
- Power Windows & Door Locks
- Audible Lane Departure Warning & Pre-Collision Assist with Automatic Emergency Braking (AEB) and Forward Collision Warning
- Cruise Control
- Tilt Steering Wheel
- Map Light
- Fog Lamps
- Keyless Entry System
- All Weather Cab Floor Mats
- Privacy Curtain
- Fiberglass Running Boards
- Valve Stem Extenders
- Aluminum Wheels

## INTERIOR

- Residential Linoleum Throughout
- 84" Interior Ceiling Height
- Soft Touch Vinyl Ceiling
- LED Lighting
- Ceiling Ducted Air Conditioning System
- Hardwood Veneer Paneling in Select Areas
- Satin Finish Cabinetry with Solid Wood Flat Panel Cabinet Doors & Nickel Finish Hardware
- Manual Roller Shades - Day/Night in Living Area & Night Shades in the Bedroom
- Leatherette Dream Dinette® Booth with Cup Holders
- Pressed Laminate Countertops in Select Areas

- Leatherette Theater Seating with Incliners & Footrests (XG32, BT36 & RS36)
- Leatherette Sofa (SV34)

## INTERIOR OPTION

- Leatherette Sofa (XG32, BT36 & RS36)
- Leatherette Theater Seating with Incliners & Footrests (SV34)
- Single Child Safety Tether in Dinette

## KITCHEN

- Double Door Refrigerator
- 2-Burner High-Output Gas Range with Single Induction Cooktop
- Stainless Steel 30" Over-the-Range Convection Microwave Oven
- Solid Surface Countertops & Sink Covers
- Kitchen Countertop LED Accent Lighting
- Decorative Tile Backsplash
- Stainless Steel Double Bowl Sink with Single Handle Faucet & Pull-Down Sprayer
- Pop-Up Countertop Outlet
- Pantry (XG32, BT36 & RS36)
- Waste Basket
- 12-volt High Capacity Power Vent with Cover

## BEDROOM & BATHROOM

- King Size Bed (SV34 & BT36)
- Queen Size Bed (XG32 & RB34)
- Tilt-A-View® Inclining Bed Mechanism (SV34)
- Headboard, Bedspread & Pillow Shams
- Bedroom 110-volt Outlet on Inverter for CPAP Machine
- Bunk Beds Convert to Closet (RS36)
- Shower with Obscure Glass Door
- Stainless Steel Bathroom Sink

- Foot Flush Porcelain Toilet (BT36)
- Macerator Toilet
- Power Bath Vent

## ENTERTAINMENT

- 39" TV on Manual Swivel in Cab-Over (SV34, BT36 & RS36)
- 39" LED TV in Living Area (XG32)
- 32" TV in Bedroom
- TV Prep in Bunk Beds (RS36)
- Tablet Holder and USB Charge Port in Bunk Bed (RS36)
- Exterior 32" TV on Swivel Bracket with Bluetooth® Built-in Sound Bar and Radio
- Bluetooth® Coach Radio System in Bedroom
- Cable TV Ready
- Digital TV Antenna
- Satellite Mounting Backer in Roof
- Winegard® Connect™ 2.0 WiFi / 4G / TV Antenna
- USB Charging Ports - Bedroom & Living Area
- Exterior Kitchen with Refrigerator & Sink (SV34 & RS36)

## ELECTRICAL & PLUMBING

- Onan® RV QD 6000 Diesel Generator
- Automatic Generator Start
- 50-amp Detachable Shoreline Power Cord
- Automatic Transfer Switch with Power Protection
- 1800-watt Inverter
- Dual Roof Air Conditioners
- Dual Auxiliary House Batteries with Battery Tray - Holds up to Four (4) Batteries
- Battery Disconnect Switch
- 100-watt Solar Charging System with Solar Controller

- Rapid Camp+® Multiplex Wiring Control System with 7" Touchscreen
- Whole Coach Water Filtration System
- Tankless Water Heater
- Water Heater Bypass System
- Enclosed & Heated Holding Tanks (XG32 & RS36)
- Enclosed Holding Tanks with Heat Pads (SV34 & BT36 Rear Tank Only)
- Black Tank Flush System
- 360° Siphon® RV Holding Tank Vent Cap
- Exterior LP Connection
- Washer/Dryer Combo Prep (RS36)
- Stackable Washer/Dryer Prep (BT36)
- Outside Shower

For a complete listing of available features visit [thormotorcoach.com/omni](http://thormotorcoach.com/omni).

Use your phone's camera to find out more information.



Just scan the code!

	XG32	SV34	BT36	RS36
Chassis	Ford F550	Ford F550	Ford F600	Ford F600
Gross Vehicle (GVWR)	19,500	19,500	22,000	22,000
Gross Combined (GCWR)	40,000	40,000	43,000	43,000
Wheel Base	227"	249"	267"	267"
Exterior Length (w/o ladder)	33'-8"	35'-9"	37'-9"	37'-9"
Exterior Height (w/AC)	12'-6"	12'-6"	12'-7"	12'-7"
Exterior Width (w/o mirrors)	99"	99"	99"	99"
Interior Height (living area)	84"	84"	84"	84"
Awning Size	14'	20'	14'	20'
Fuel (gal)	28F / 40R	28F / 40R	28F / 40R	28F / 40R
LPG (lbs)	68.2	68.2	68.2	68.2
Fresh/Waste/Gray Water (gal)	75 / 40 / 47	65 / 40 / 40	75 / 40F - 31R / 40	75 / 40 / 40
Water Heater (gal)	Tankless	Tankless	Tankless	Tankless
Furnace (BTUs)	30,000	30,000	30,000	30,000
Exterior Storage Capacity (cu. ft.)	78	78	83	74
Hitch Weight Rating (lbs)	10,000	10,000	12,000	12,000



Made to fit.

**IMPORTANT-PLEASE READ:** This brochure reflects product design, fabrication, material, components and specifications at the date of printing, which date is disclosed below. Please visit us online at [ThorMotorCoach.com](http://ThorMotorCoach.com) or consult with your selling dealership for the latest in standards, options, specification and technical information. Photographs in the brochure may depict optional equipment or may only be available in certain floor plans. Components, appliances and the chassis may have been manufactured in a calendar year before the vehicle's designated model year. All capacities are approximate. The actual length of the vehicle may differ from that indicated in the brochure due to variances in the manufacturing processes and/or installed components. All dry weights are based on standard model features and do not include optional features or equipment. Component part and appliance manufacturers issue limited warranties covering portions of the vehicle not covered under the limited warranty we issue. Copyright Thor Motor Coach, Inc. © OH 01/07/2022

P.O. Box 1486, Elkhart, IN 46515 Sales Department: 800.860.5658

[thormotorcoach.com/omni](http://thormotorcoach.com/omni)

