

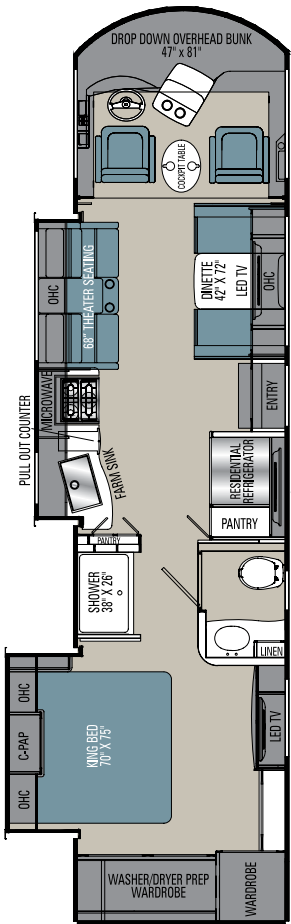


SPORTSCOACH SRS

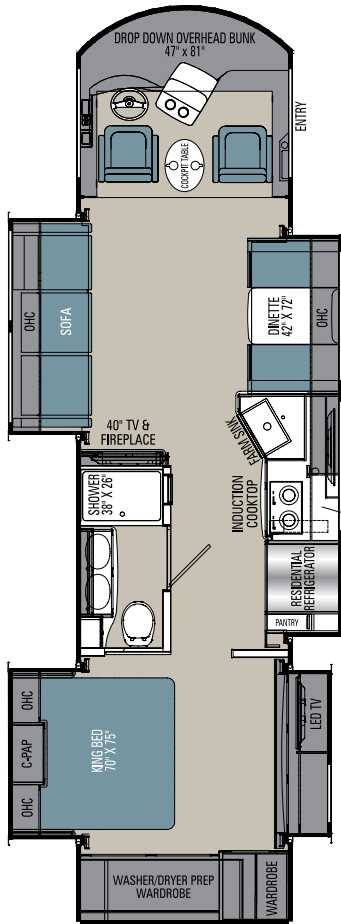


SCAN HERE

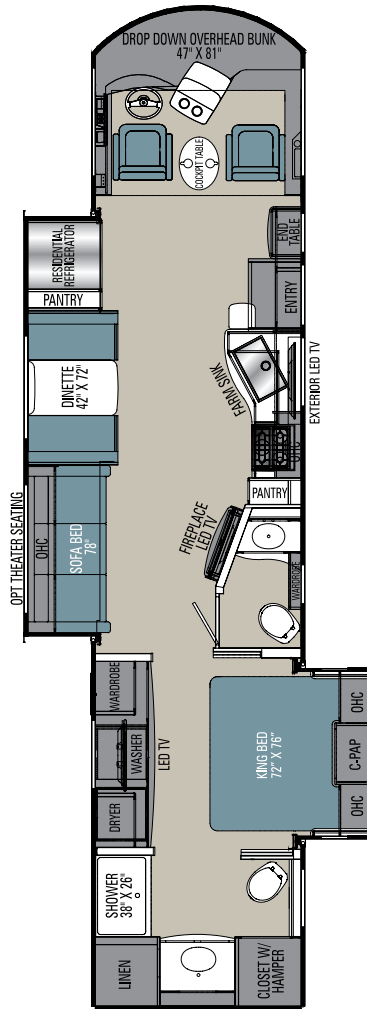
To see available Standards, Options and Features!



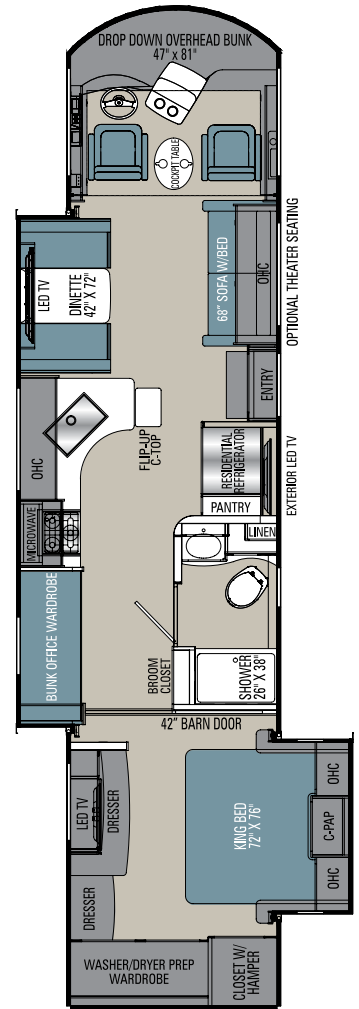
339DS



354QS



365RB



376ES

SPORTSCOACH SRS SPECIFICATIONS

CLASS A DIESEL	339DS	354QS	365RB	376ES
CUMMINS ISB 6.7L ENGINE	340 HP@2600 RPM	340 HP@2600 RPM	340 HP@2600 RPM	340 HP@2600 RPM
ALLISON TRANSMISSION	2100MH	2100MH	2500MH	2500MH
WHEEL BASE	208"	208"	252"	252"
GVWR	26,000 lbs	26,000 lbs	29,410 lbs	29,410 lbs
GCWR	30,000 lbs	30,000 lbs	33,000 lbs	33,000 lbs
GAWR FRONT	10,410 lbs	10,410 lbs	10,410 lbs	10,410 lbs
GAWR REAR	17,500 lbs	17,500 lbs	19,000 lbs	19,000 lbs
FUEL CAPACITY	90 gal	90 gal	90 gal	90 gal
LP GAS CAPACITY	20 gal	20 gal	20 gal	20 gal
FURNACE (BTUs)	(2) 20,000	(2) 20,000	35,000	35,000
EXTERIOR LENGTH (w/o Ladder)	36' 3"	36' 3"	40' 0"	40' 0"
EXTERIOR HEIGHT (w/A/C)	12' 10"	12' 10"	12' 10"	12' 10"
EXTERIOR WIDTH	102"	102"	102"	102"
FRESH WATER	72 gal	72 gal	72 gal	72 gal
GREY WATER	45 gal	45 gal	45 gal	45 gal
BLACK WATER	45 gal	45 gal	45 gal	45 gal
WATER HEATER	10 gal	10 gal	10 gal	10 gal
AWNING SIZE	18'	14'	17'	20'
TOW HITCH	8,000 lbs	8,000 lbs	8,000 lbs	8,000 lbs

GVWR (Gross Vehicle Weight Rating) is the maximum permissible weight of the unit when fully loaded. It includes all weights, inclusive of all fluids, occupants, cargo, optional equipment and accessories. For safety and product performance do NOT exceed the GVWR.

GCWR (Gross Combined Weight Rating) is the maximum permissible loaded weight of your motor home and any towed trailer or towed vehicle. Actual GCWR of this vehicle may be limited by the sum of the GVWR and the installed hitch receiver maximum capacity rating; see hitch rating label for detail.

GAWR (Gross Axle Weight Rating) is the maximum permissible weight, including cargo, fluids, optional equipment and accessories that can be safely supported by each axle.

UVW (Unloaded Vehicle Weight) * is the typical weight of the unit as manufactured at the factory. It includes all weight at the unit's axle(s), including full fuel, all fluids and LP Gas. The UVW does not include cargo, fresh potable water, additional optional equipment or dealer installed accessories.

*Estimated Average based on standard build optional equipment.

CCC (Cargo Carrying Capacity) ** is the amount of weight available for fresh potable water, cargo, passengers, additional optional equipment and accessories. CCC is equal to GVWR minus UVW. Available CCC should accommodate fresh potable water (8.3 lbs per gallon). Before filling the fresh water tank, empty the black and gray tanks to provide for more cargo capacity.

** Estimated average based on standard build optional equipment

Each Coachmen motorhome is weighed at the manufacturing facility prior to shipping. A label identifying the unloaded vehicle weight of the actual unit and the cargo carrying capacity is applied to every Coachmen motorhome prior to leaving our facilities.

The load capacity of your unit is designated by weight, not by volume, so you cannot necessarily use all available space when loading your unit.

Actual towing capacity is dependent upon your particular loading and towing circumstances, which includes the GVWR, GAWR and GCWR as well as adequate trailer brakes. Please refer to the Operator's Manual of your vehicle for further towing information.

All information contained in this brochure is believed to be accurate at the time of publication. However, during the model year, it may be necessary to make revisions and Coachmen reserves the right to make all such changes without notice, including prices, colors, materials, equipment and specifications as well as the addition of new models and the discontinuance of models shown in this brochure. Therefore, please consult with your Coachmen dealer and confirm the existence of any materials, design or specifications that are material to your purchase decision. 8/21

©Copyright 2021 Sportscoach RV a Division of Forest River Inc. - All Rights Reserved.

CUSTOMER SATISFACTION



www.ForestRiverBuyLocal.com



FREE MEMBERSHIP
www.coachmenowners.com



Learn More
Scan this barcode using a QR Reader on your smart phone to learn more about Forest River.



A Berkshire Hathaway company.



Sportscoach RV, a Division of Forest River, Inc.,
A Berkshire Hathaway Company

423 N. Main St., P.O. Box 30, Middlebury, IN 46540

To learn more about Sportscoach RV and our products and see how Sportscoach is making the easy life easier, visit www.sportscoachrv.com

24/7 EMERGENCY ROADSIDE ASSISTANCE WITH VEHICLE PURCHASE*

TOWING	WINCH-OUT
JUMP-STARTS	MOBILE MECHANIC
TIRE CHANGES	TECHNICAL
FLUID DELIVERY	SUPPORT
LOCKOUT	DEALER LOCATOR
SERVICE	SERVICES



*VALID FOR 1 YEAR FROM DATE OF PURCHASE