

Challenger



redefining value



Challenger



32RKS Shown in Briarwood Decor

tranquility

In the past, luxury and value were contradictory terms, but Challenger has redefined value to include the very best in price, luxury, and satisfaction.

Elegant style, great floor plans, and wonderful features from end to end give new meaning to RV living – all with a generous dose of residential quality that enhances your long-term enjoyment.



placidity

Residential appeal is evident at every turn with Challenger. Glazed maple cabinetry creates an elegance and warmth found in many of today's finest homes. Comfortable furnishings are covered with luxurious fabrics that will make every guest feel welcome, yet provide years of durability. Abundant storage, a large LCD television with DVD player, and an extra large kitchen sink with a hi-rise faucet are just a few of the many features that are sure to make you feel at home when you're on the road.





35CKQ Shown in Tuscany Red Decor



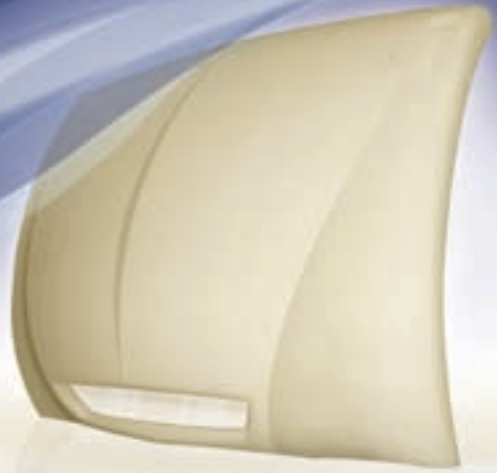
35CKQ Shown in Tuscany Red Decor

picturesque

Since our designers know that having a beautiful interior is only one element of total satisfaction, Challenger strives to create an environment of comfort and convenience that maximizes your enjoyment. Attention to such details include an 80" pillow-top king size bed, extra tall bedroom drawers with full extension guides that allow complete access, and a spacious marble finish shower stall with a large glass door. The phrase "sleep like a king" was never more appropriate.



INDUSTRY LEADING
A E R O D Y N A M I C S
WHERE MPG AND SAFETY MEET!



The Challenger "Easy Tow" front fiberglass cap provides 18% better aerodynamics than many of today's leading fifth wheels. With its unique multi-radius design, strategically lowered leading edge, and multiple wind channels to enhance air flow, "Easy Tow" provides improved fuel economy, increased stability, and a safe, enjoyable towing experience.

TURNING RADIUS REDEFINED

In response to customer demand, Challenger is proud to introduce an all-new front fiberglass cap that improves turning radius over 30% compared to other fifth wheel brands. Utilizing the latest in Computer Aided Design technology, this advancement in turning radius was created without compromising aerodynamics, structural integrity, or styling. When combined with the convenience of Challenger's "Hitch Assist" back-up mirror, you have the industry's most advanced front cap ever.



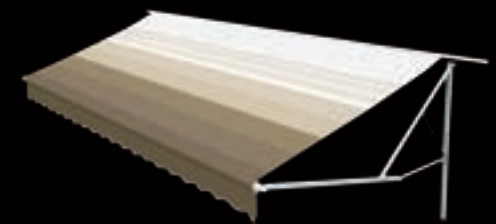
Pass Thru Storage: Challenger's pass thru storage area features a 70" access door, skid resistant flooring and unmatched storage capacity.



Waterworks: The all-in-one "Waterworks" area is a convenience normally reserved for luxury motorhomes.



Safety First: Because safety is a priority, Challenger is standard with name brand, E-Load 16" radial tires attached to 8-lug wheels.



Electric Awning: Customers love the one-touch convenience of Challenger's deluxe electric patio awning.

CHALLENGER CONSTRUCTION

WALL CONSTRUCTION

- 1 Gel-coated fiberglass exterior
- 2 1/8" Lauan wood backer
- 3 Second layer 1/8" lauan wood backer with staggered seams
- 4 Hi-density block foam insulation
- 5 Radius window corner blocks
- 6 2" Welded aluminum sidewall studs
- 7 Fiberglass batten insulation
- 8 High-gloss front fiberglass cap
- 9 Metal backing strips

ROOF CONSTRUCTION

- 10 Aluminum radius roof corner molding wrap
- 11 One-piece EPDM rubber roof with 12-year warranty
- 12 3/8" Fully walkable roof decking
- 13 Fiberglass batten insulation
- 14 5" "Snow Load" roof trusses
- 15 1/8" Ceiling decking with vinyl protection

FLOOR CONSTRUCTION

- 16 Residential grade carpet with stain protection
- 17 Residential grade carpet padding
- 18 5/8" Seamless wood floor decking with limited 25 year warranty
- 19 Fiberglass batten insulation
- 20 Darco wrap (main floor)
- 21 Fiberglass batten holding tank insulation
- 22 One-piece, fluted polypropylene fully enclosed sub-floor
- 23 3" floor joists on 12" - 16" centers

TIRES AND CHASSIS

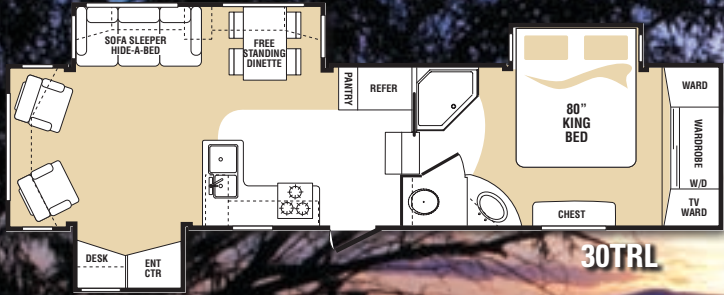
- 24 10" Steel "powder coated" I-beam frame
- 25 16" E-load radial tires
- 26 EZ Lube, 8-lug axles

When creating Challenger, our engineers recognized that great looks, comfort and convenience are only part of what make a customer truly satisfied. Aluminum framed sidewalls offer lighter weights and long-term durability. A revolutionary front cap contributes to industry-leading aerodynamics and turning radius. Intelligent details like "No Sweat" attic vents contribute to four season usage. Feel confident, because with Challenger, the hidden details of quality construction were a priority long before the first unit was ever built.

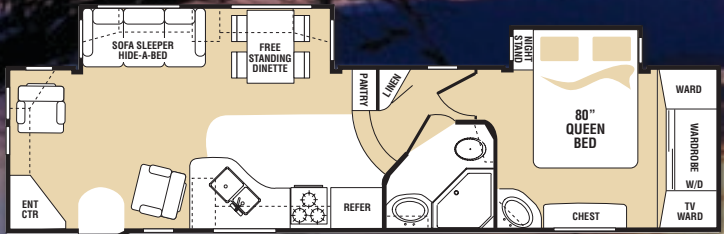


Vented Attic: The "No Sweat" attic vents help to eliminate moisture and condensation during cold weather use.

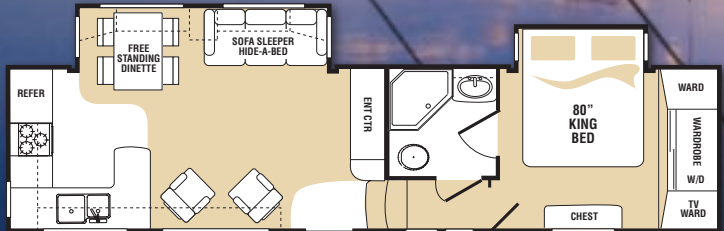
Floorplans



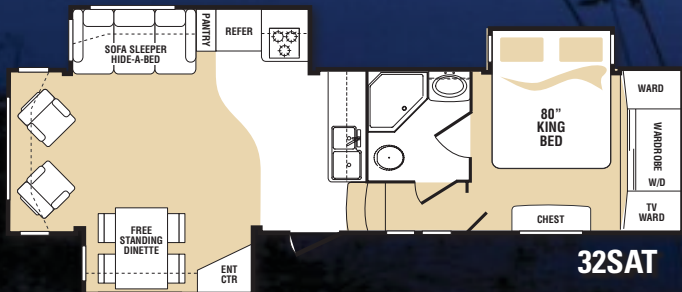
30TRL



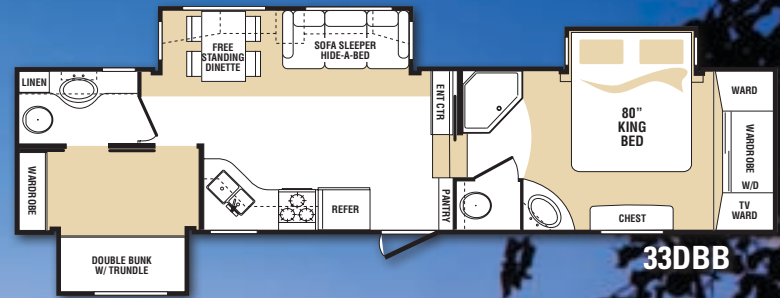
31RLS



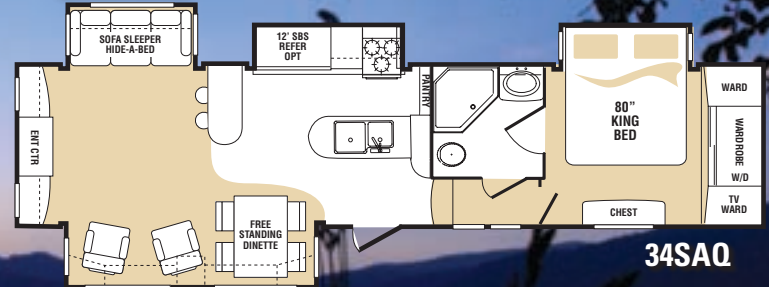
32RKS



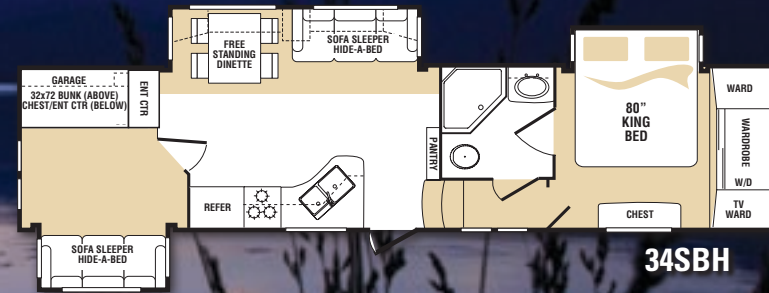
32SAT



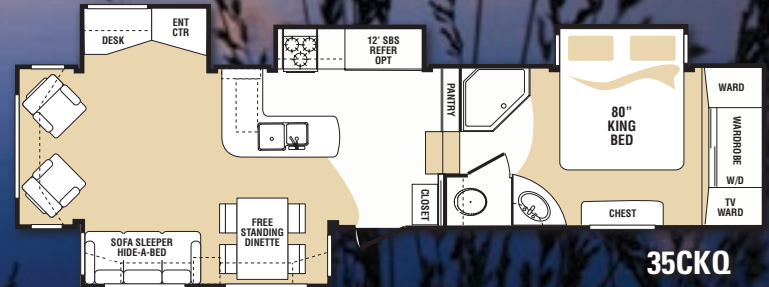
33DBB



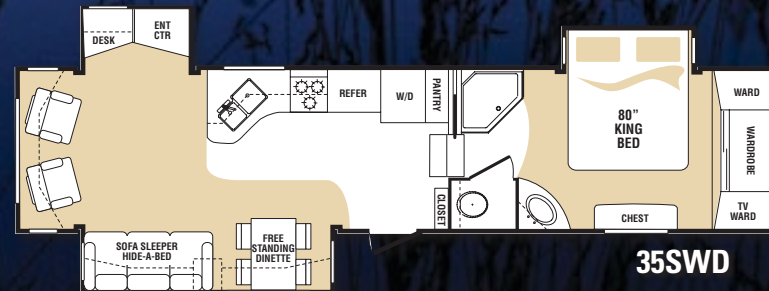
34SAQ



34SBH



35CKQ



35SWD

Interior Features

- Glazed maple, Endura cabinet doors with 10 year warranty
- Glazed maple, Endura drawer fronts
- Upgraded appliance package featuring:
 - ✓ Large 8' double door refrigerator
 - ✓ Large microwave oven with vented range hood
 - ✓ Hi output 3 burner range with 22" oven
 - ✓ 12 gallon gas/electric water heater with DSI
 - ✓ 15,000 BTU air conditioner with quick cool
 - ✓ 35,000 BTU ducted furnace
- Digital climate control center
- Heavy duty, residential ball bearing drawer guides
- 20" deep drawers where applicable
- Pre-drilled, screwed maple cabinetry with lumbercor styles
- Designer kitchen countertops
- Extra large kitchen sink with deep bowls
- High rise kitchen faucet
- Space-saver silverware tray
- Refrigerator and stove storage drawers (select models)
- "Media Pro 5000" AM/FM stereo, CD and DVD player with surround sound
- "Sleep and Store" air mattress sofa
- 4 high back dinette chairs

- Free standing dinette table with sliding tabletop
- Digital TV antenna with built-in amplifier
- Dual cable and satellite TV hook-ups
- Extra tall 6'5" main slide room height
- Designer slide room fascia trim
- Day/night shades
- Ceiling fan with light kit
- Telephone jack
- LP leak detector
- Monitor panel
- One-piece, marble-finished shower surround
- Translucent glass shower door and enclosure
- Residential handheld massaging shower head
- Skylight over shower
- Porcelain foot-flush toilet
- Single-level master bedroom suite (no step from bath to bed)
- Residential king size bed (most models)
- Innerspring pillow-top mattress
- Convenient cell phone holder with charging station
- Residential style headboard
- Residential style chest of drawers in bedroom
- Quilted bedspread and pillows

Exterior Features

- "Deep and Wide" pass-thru storage with anti-skid flooring and 70" access door
- 50 AMP service with detachable power cord

- "Easy Tow" hi-gloss front fiberglass cap featuring:
 - ✓ 30% more turning radius
 - ✓ 18% better aerodynamics
 - ✓ "Hitch Assist" back-up mirror
- Hi-gloss fiberglass rear bumper
- One-piece, polypropylene underbelly
- Triple ducted, heated holding tanks
- All-in-one "Waterworks" exterior utility center featuring:
 - ✓ "Easy Siphon" winterization system
 - ✓ Water heater bypass
 - ✓ Enclosed low point drain shut-off valves
 - ✓ Heat vent for cold weather protection
 - ✓ Black tank flush
 - ✓ Soap dispenser
- 16" E-load radial tires with 8 lug wheels
- Heavy duty 6000 lb. axles
- Easy-Lube axles
- "No Sweat" vented attic system
- Folding entrance handle
- Easy open triple steps
- Extra large entrance door: 6'4" high and 30" wide
- Power front landing jacks
- Easy-to-access, front-facing snap jack pins
- Gutters with rain spouts
- Rear ladder

- Outside entertainment package featuring:
 - ✓ Two exterior stereo speakers
 - ✓ Cable TV hook-up
 - ✓ 110 V outlet
- Tinted (80%) safety glass windows

Options

- Recliner/glider – one or two
- Euro-style reclining chair – one or two
- (2) bar stools
- Booth dinette (most models)
- Wire and brace for second A/C in bedroom - non-ducted
- Dual A/C Package
- Garden tub IPO shower
- Generator prep
- Create-a-Breeze roof vent in kitchen
- Desk chair (where applicable)
- End table (where applicable)
- Extra sink cover
- CSA Construction
- Extra large 12' SBS refrigerator (34SAQ and 35CKQ)
- High gloss fiberglass exterior

Challenger Convenience Package

- Electric awning
- Security lights
- Washer and dryer prep
- Water purifier
- 16" undercarriage spare tire kit
- Exterior shower
- Carbon monoxide detector
- 26" LCD TV

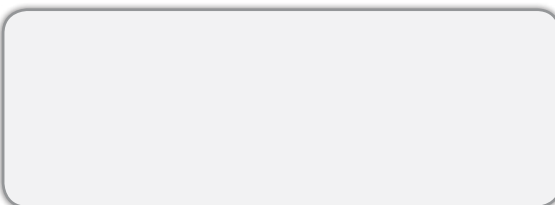


Model	30TRL	31RLS	32RKS	32SAT	33DBB	34SAQ	34SBH	35CKQ	35SWD
Shipping Weight	11035	10375*	10110	10525	11250 *	11350	11155	11455	11155
Carrying Capacity	3025	3195*	3290	3755	3070 *	2685	2835	2385	2960
Hitch	2060	1700*	2460	2280	2320 *	2035	1990	1840	2115
Exterior Length	35' 1"	35'	34' 10"	34' 10"	37' 3"	36' 10"	37' 3"	37' 3"	37' 4"
Exterior Height (A/C Top)	12' 8"	12' 8"	12' 8"	12' 8"	12' 8"	12' 8"	12' 8"	12' 8"	12' 8"

* Estimated at time of printing

an oasis of serenity

FOR MORE INFORMATION, CONTACT YOUR CHALLENGER DEALER:



Product information is as accurate as possible as of the date of publication of this brochure. Features, floor plans, and specifications are subject to change without notice. Please also consult Keystone's web site at keystonerv.com for more current product information and specifications.

Tow Vehicle Disclaimer: CAUTION: Owners of Keystone recreational vehicles are solely responsible for the selection and proper use of tow vehicles. All customers should consult with a motor vehicle manufacturer or their dealer concerning the purchase and use of suitable tow vehicles for Keystone products. Keystone disclaims any liability or damages suffered as a result of the selection, operation, use or misuse of a tow vehicle. **KEYSTONE'S LIMITED WARRANTY DOES NOT COVER DAMAGE TO THE RECREATIONAL VEHICLE OR THE TOW VEHICLE AS A RESULT OF THE SELECTION, OPERATION, USE OR MISUSE OF THE TOW VEHICLE. 10/07**

Challenger
by Keystone

is a product of:  **Keystone RV Company**

2642 Hackberry Drive, Goshen, IN 46526

(574) 535-2100

www.keystone-challenger.com