



MONACO®

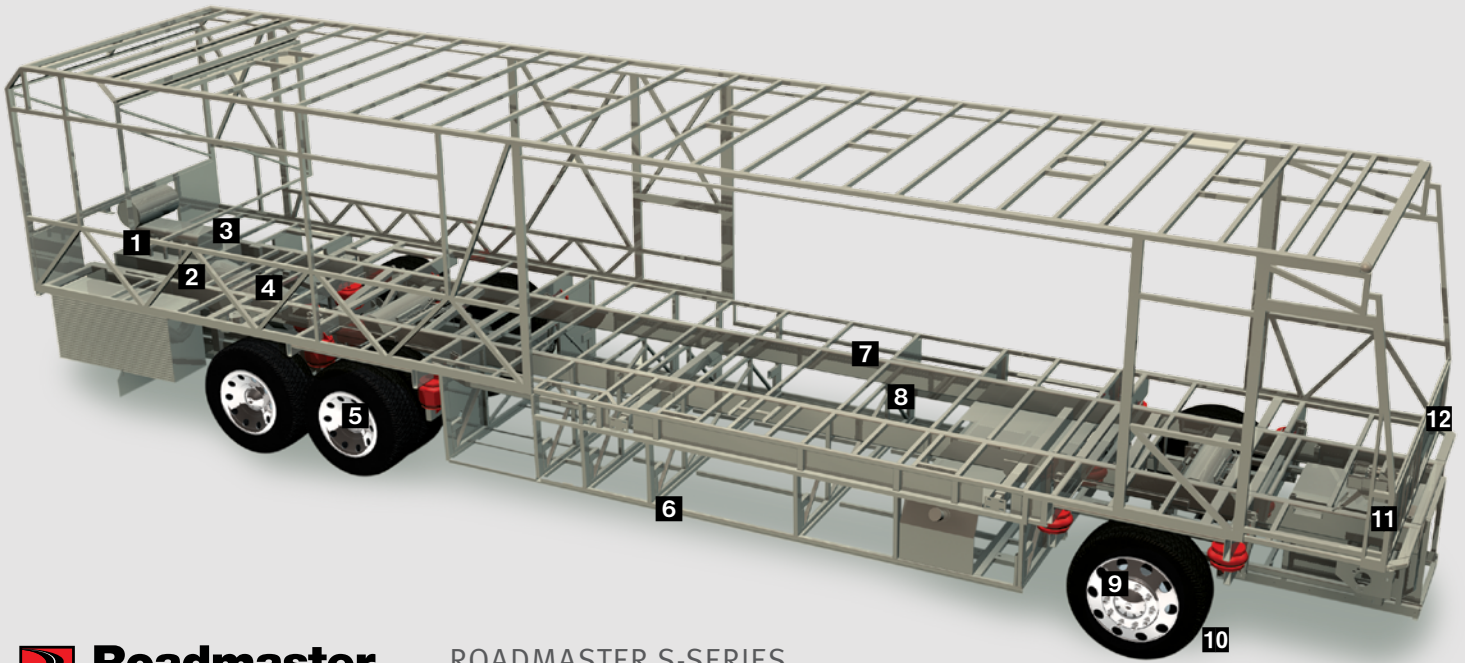
DRIVING YOUR DREAM.

SIGNATURE SERIES

 | 07



## SIGNATURE SERIES



### ROADMASTER S-SERIES SEMI-MONOCOQUE CHASSIS

**1** 10,000 lb. hitch receiver offers powerful towing capacity with 7/4-way trailer plug. Pre-wired for supplemental braking system that works with your tow vehicle.

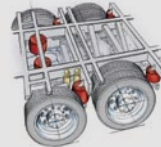
**2** The three-point engine mounting system lowers the coach's center of gravity and reduces the amount of vibration that reaches the coach. The mounting also makes the engine easier to service by allowing the engine to be easily lowered through the bottom of the coach.

**3** Cummins® ISX 525 HP engine. The highest power-to-weight ratio in its class. And the patented Variable Geometry Turbocharger (VG Turbo) gives you peak performance at every RPM.

**4** Allison® 4000 MH 6-speed transmission for smooth shifting; our exclusive use of synthetic transmission fluid allows for up to three-year maintenance intervals.

**5** Cushion Air Glide suspension system positions ten Bilstein® shocks and ten air bags, eight of which are outboard mounted with auto-leveling for greater stability, a smoother ride and the best handling in its class.

Unique three-degree rear axle tilt perfectly aligns the engine, transmission and differential, minimizing stress on the drivetrain and reducing noise in the coach.



Automatic Traction Control (ATC) eliminates wheel slippage in slick conditions and heightens control.

Tag axle lifts for added maneuverability in tight spots.

**6** Basement structure rust inhibitor. To prevent corrosion, the basement storage area is constructed with pre-primed steel with rust-inhibiting paint.

**7** Full-length frame rails fabricated from 3" by 8" by 1/4" 60,000 PSI structural steel; rails are spaced 44" on center for a wider stance and unmatched strength.

**8** The semi-monocoque design, with trussed superstructure, distributes stress evenly throughout the entire chassis and adds strength to sidewalls and bays.

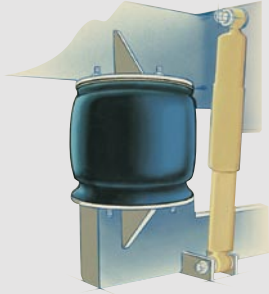
## MAY WE BUILD YOU A CHASSIS?

Did you know that every Roadmaster chassis is custom designed and built for the Monaco coach that will ride on it? It's a novel idea, but our owners seem to like it. And it pays off — in better performance, safety and reliability. Owners also like the fact that Roadmaster, a division of

Monaco Coach Corporation, only does one thing: They build chassis for motorhomes. Not trucks. Not buses. Just motorhomes. So naturally, they do it better. No wonder Roadmaster is the leading high-end diesel chassis manufacturer in America.

## OUTBOARD AIR BAG SUSPENSION

The outboard-mounted air bags are protected by two steel plates and are placed farther apart than the competition, providing a wider and more stable platform for the coach. The active suspension automatically adjusts the pressure of the air bags as you drive and virtually eliminates nosediving and the side-to-side body sway associated with high wind conditions, curvy roads and emergency maneuvers.



Signature Series offers the gutsy power of a Cummins® ISX 525 HP engine with unbeatable torque at the RPM where you need it most.

**9** Two-stage Jake brake system assures you of safely traveling steep grades while 6-wheel anti-lock brakes with disc brakes in front help you maintain control in severe road conditions.

**10** P295/80R/22.5 Goodyear steel belted all-season tires ensure a safe and quiet ride (G670 RV tire).

**11** The TRW power steering box allows for a 50-degree front wheel turn angle in both directions for better maneuverability and returns the steering wheel to its center position to eliminate driver fatigue.

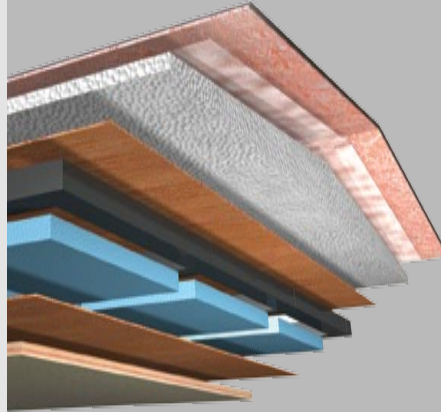
**12** All chassis are equipped with steel cage construction, steel firewall and steel stepwell for added safety.

## CONSTRUCTION



### 8-LAYER ALL-SEASON FOAM INSULATED ROOF: (top to bottom)

- One-piece 1/4" thick fiberglass roof, crowned for water runoff and seamlessly joined with front and rear end caps; non-skid walkways on outboard areas for added convenience
- Vapor barrier
- 3-1/2" tapered bead foam supports the crowned roof; the center tunnel houses wiring and air conditioner ducts
- 1/4" marine grade plywood sheeting
- Tubular steel framework
- R 7.5 closed cel foam seals every nook and crevice
- Luaun and vinyl paneling are Vac-U-Bonded
- Sound-absorbing, easy-to-clean padded vinyl interior headliner



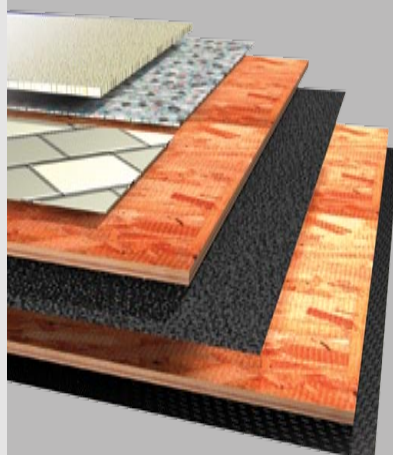
### 6-LAYER LAMINATED GEL COAT FIBERGLASS SIDEWALLS: (left to right)

- Gel coat fiberglass outer wall
- Luaun paneling
- R 7.5 closed cel foam seals every nook and crevice
- Heavy-gauge tubular steel and 4" steel plate backers
- Luaun paneling; walls are Vac-U-Bonded together
- Decorative wall coverings



### 5-LAYER FLOORING: (top to bottom)

- Tile, or 1/2" carpet pad and carpeting
- OSB flooring
- Decibel paper
- OSB flooring
- Waterproof Darco underbelly



**ASSISTANCE**  
SALES • TECH • ROADSIDE  
**1-877-4MONACO**

## WE'RE HERE. ANYTIME, EVERY TIME.

- Reach us anytime — literally — via our live customer support line.
- Drive in to one of our 350 Service Centers.
- Enjoy the first year free when you enroll in our Owner Advantage Roadside Assistance Program.
- See where it all begins with a tour of one of our facilities in Indiana or Oregon. Call 1-800-650-7337 or 1-800-634-0855 to find out more.

# SIGNATURE SERIES

STAINED OAK



NATURAL OAK



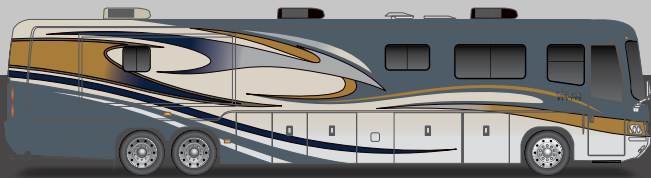
STAINED CHERRY



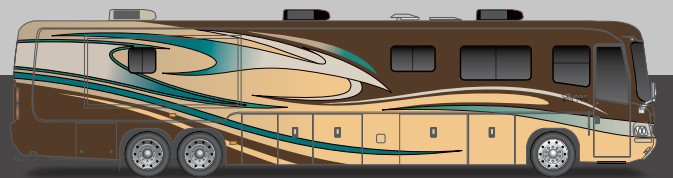
NATURAL CHERRY



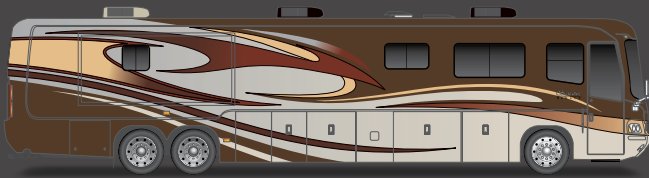
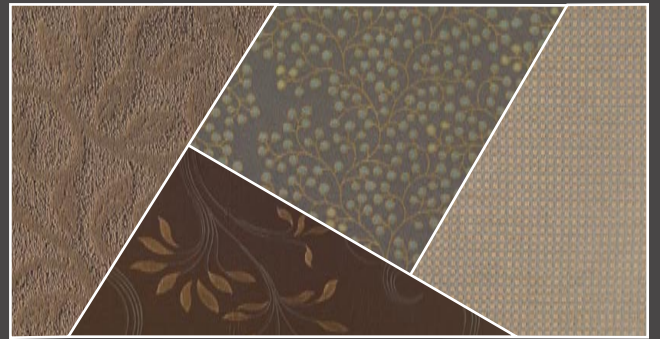
CLASSIC CHERRY



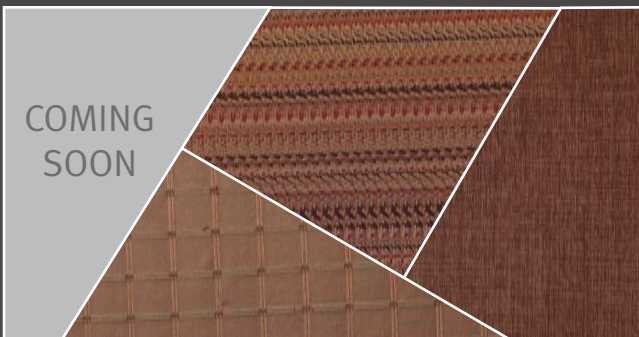
AMBER SLATE



AQUA TOPAZ



CAYENNE SPICE



MALIBU SAND II





NATURAL MAPLE

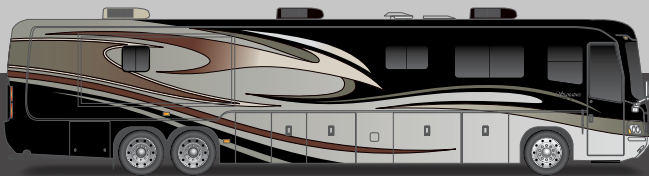


SPICED MAPLE



WHICH WAY WILL YOU GO?

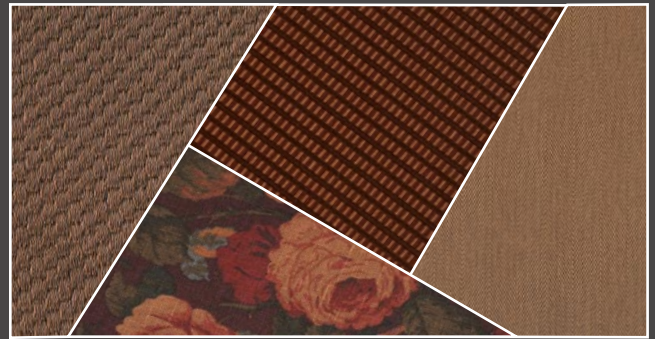
We know you love choices. That's why our designers give you so many tempting options. From mild to wild, discriminating to daring, Monaco offers lots of fun ways to go.



RALPH LAUREN BLACK PEARL



RALPH LAUREN LANDSDOWN II



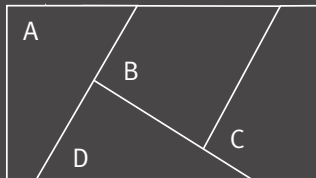
Note: Colors depicted are a reasonable representation though they may not be an exact match of the actual colors due to variances in processing and production. See your dealer for actual fabric and paint chip samples.

RALPH LAUREN PACKAGE:

Here's a feast for your senses. Our exclusive Ralph Lauren package offers upgraded features throughout the coach. Because we want your life on the road to be beautiful.

- › Upgraded Ralph Lauren Fabrics Both Living Room and Bedroom
- › Upgraded Villa Furniture Featuring 2-Tone Ralph Lauren Fabric/Leather and Villa Dinette Chairs
- › Upgraded Galley and Lavatory Faucets
- › Upgraded Tumbled Stone Galley/Bath Backsplashes ILO Corian®
- › Polished Porcelain 14" x 14" Floor Tile
- › Upgraded Carpet
- › Additional Decorative Pillows in Ralph Lauren Fabrics
- › Decorative Lighting All in Brush Bronze
- › Detailed Decorative Carved Headboard
- › Upgraded Carved Slide-Out Fascia
- › Upgraded Knobs and Pulls
- › Wallpaper
- › Ceiling Treatments

- Carpet A
- Dinette B
- Sofa C
- Bedspread D



Better Stain Protection

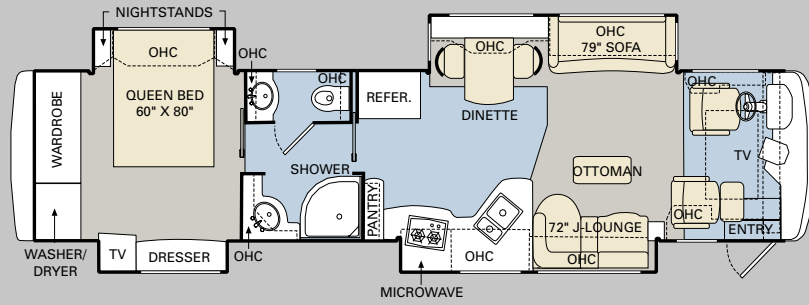
Manufactured in, not added on. For added protection against stains, soil repellent is applied to virtually all upholstery fabric during the finishing process for superior coverage.\*



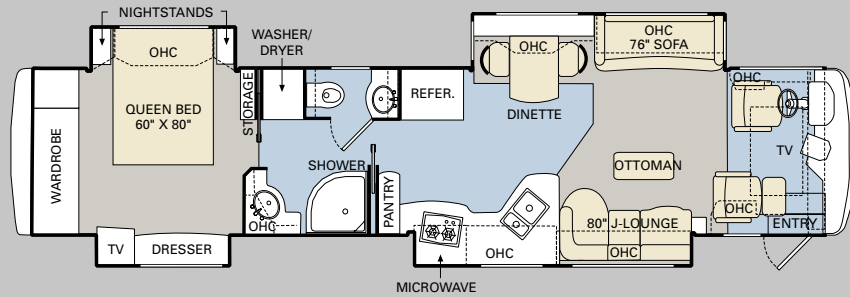
\* Brand and application of upholstery fabric protection may vary depending on date recreational vehicle was manufactured.

# SIGNATURE SERIES

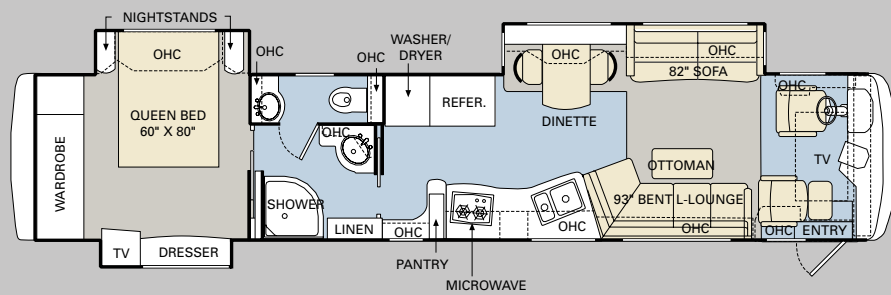
40 PLATINUM IV



42 CHATEAU IV



44 CARDINAL III

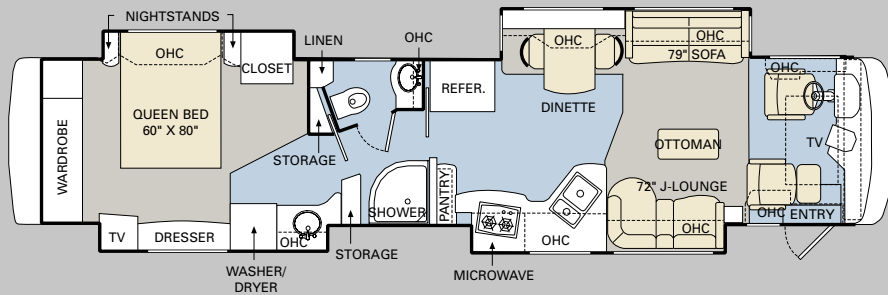


TILE  CARPET

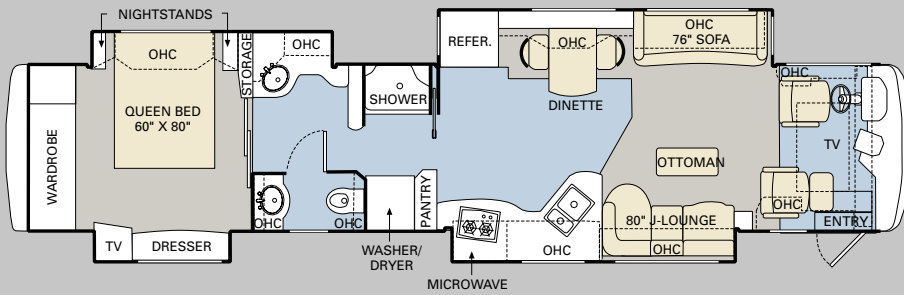
Ready to choose? The 2007 Signature Series is available in a wide selection of large, livable floorplans from 40 to 45 feet, with triple or quad slide-outs. And this year, we're offering the new 45 Noble III with PanaSuite™ full-wall slide. It provides maximum uninterrupted living space on the driver's side of the coach.

## FURNITURE OPTIONS:

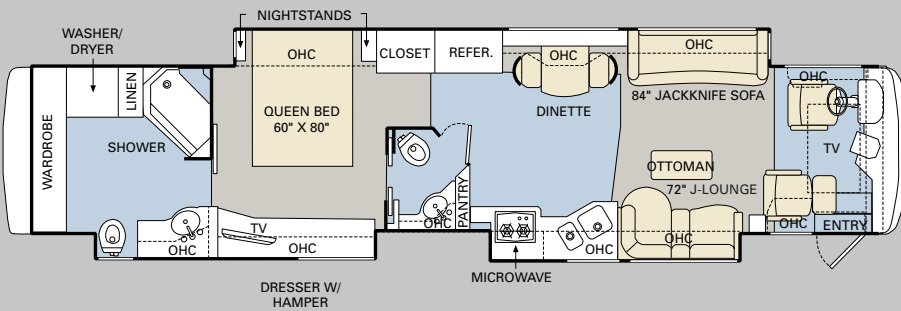
- King Air Mattress with Digital Remote
- Roadside: Leather Euro-Recliner with Ottoman
- Roadside: Glider Recliner with Ottoman
- Roadside: Computer Desk with Leather Euro-Recliner
- Roadside: Leather Hide-a-Bed with Air Mattress
- Fabric/Leather Sectional Booth Dinette Ensemble
- Computer Desk in Bedroom with Bedroom Chair (44 Conquest IV)



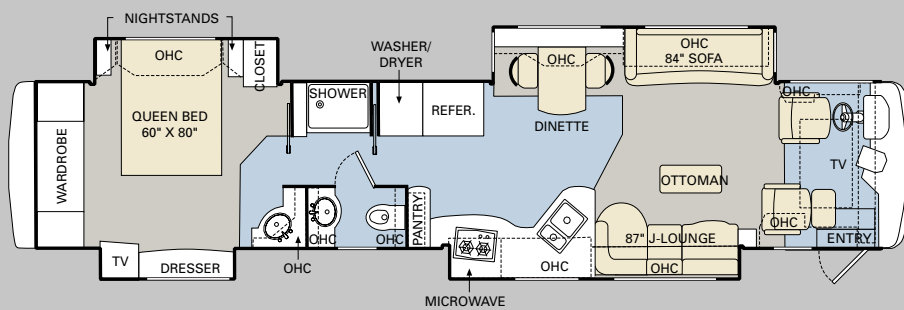
44 CONQUEST IV



45 CASTLE IV



45 NOBLE III



45 COMMANDER IV

ALL ROADS LEAD TO [WWW.MONACOCOACH.COM](http://WWW.MONACOCOACH.COM).

Wherever the road takes you, you're never more than a click away from your friends at Monaco. Just go to [www.monacocoach.com](http://www.monacocoach.com) for all the latest product news, club dates and destinations, a dealer locator function, and factory tour information. You can also e-mail us directly through the site at any time.



# SIGNATURE SERIES

# SPECIFICATIONS

	Weight Ratings (Lbs.)					Measurements	Wheelbase	Overall Length	Overall Height (with A/C) (add 5" for satellite option)	Interior Height	Interior Width	Exterior Width	Tank Capacity (Gal.) <sup>2</sup>				
	Gross Vehicle	Gross Combined <sup>1</sup>	Front Gross Axle	Rear Gross Axle	Tag Axle								Gray Tank	Black Tank	Fresh Tank	LP Tank <sup>3</sup>	Fuel Tank
40 Platinum IV	50,160	60,160	15,160	23,000	12,000	250.75"	41' 7"	12' 8"	84"	96"	100.5"	72	40	100	25	150	
42 Chateau IV	50,160	60,160	15,160	23,000	12,000	271"	43' 1"	12' 8"	84"	96"	100.5"	72	40	100	25	150	
44 Cardinal III	50,160	60,160	15,160	23,000	12,000	278"	44' 7"	12' 8"	84"	96"	100.5"	72	40	100	25	150	
44 Conquest IV	50,160	60,160	15,160	23,000	12,000	278"	44' 7"	12' 8"	84"	96"	100.5"	72	40	100	25	150	
45 Castle IV	50,160	60,160	15,160	23,000	12,000	280"	44' 11"	12' 8"	84"	96"	100.5"	72	40	100	25	150	
45 Noble III	50,160	60,160	15,160	23,000	12,000	280"	44' 11"	12' 8"	84"	96"	100.5"	72	40	100	25	150	
45 Commander IV	50,160	60,160	15,160	23,000	12,000	280"	44' 11"	12' 8"	84"	96"	100.5"	72	40	100	25	150	

<sup>1</sup>Towing capacity is limited by GCWR; your vehicle's towing capacity is the difference between the GCWR and the actual vehicle weight, including all water, fuel, passengers and cargo. Your towed vehicle should be equipped with auxiliary brakes if the weight of the towed vehicle exceeds 1,000 lbs. Consult your owner's manual for further towing information.

<sup>2</sup>All tank capacities are estimated based upon calculations provided by the tank manufacturers and represent approximate capacities. The actual "usable capacity" may be greater or less than the estimated capacities based upon fabrication and installation of the tanks.

<sup>3</sup>Actual filled LP capacity is 80% of listing due to safety shut-off required on tank.

The actual overall length of the recreational vehicle may differ from that indicated in the brochure due to variances in the manufacturing process and/or installed components. The actual length may be greater or less than that indicated. Due to the large variety of options and floorplan arrangements available to our customers, actual weights for each unit can differ significantly. Monaco Coach provides a weight sticker on each unit we produce which includes that unit's tank capacities and approximate weight. Consult your local Monaco Coach dealer for unit availability and further information. The information printed in this brochure reflects product design, fabrication, and component parts at the date of printing. The manufacturer reserves the right, at any time, to make changes in product design or material or component specifications as its sole option, without notice. This

includes the substitution of components of a different brand or trade name which will result in comparable performance. All information printed in this brochure is subject to change after the date of printing. Some features shown or mentioned in this brochure are optional and may only be available in selected floorplans. Photographs may show props or decorations that are not standard equipment on Monaco Coach models. Monaco Coach, the Monaco logo and its design, are registered trademarks. All other products and company names are trademarks and/or registered trademarks of their respective holders. While the color of the motorhome's exterior and the interior fabrics depicted in this sales brochure are fair and reasonable depictions, the colors depicted may not be an exact match of the actual colors because of the variances in photo-processing and variances caused by inserting the

photographs within the sales brochure. Due to product improvements, changes during the model year and/or transcription errors that may occur, information represented within this brochure may not be accurate at the time of your purchase. If certain information is significant to your purchasing decision, please confirm the information with your dealer prior to submitting your order. Component part and appliance manufacturers issue limited warranties covering those portions of the recreational vehicle not covered by the Limited Warranties issued by Monaco Coach Corporation. To learn which specific component parts and appliances are excluded from the Limited Warranties issued by Monaco Coach Corporation, please contact your selling dealership or Monaco Coach Corporation directly, or review the warranty packet inside the recreational vehicle.





## BODY CONSTRUCTION

- › Heavy-Duty Steel Superstructure with Steel Cage Cockpit Construction
- › Seamless One-Piece Molded Crowned Fiberglass Roof
- › All-Season Foam Insulated Roof
- › Laminated Gel Coat Fiberglass Walls
- › Five-Layer Flooring with Two Layers of OSB Flooring
- › Deluxe Full-Body Paint
- › Panaview™ 1-Piece Front
- › Triple Head Power Controlled Heated Chrome Exterior Mirrors with Security Cameras and Turn Indicator Lights
- › Halogen Fog Lamps
- › Daytime Running Lights
- › Recessed Side Docking Lights
- › Dual Trumpet Air Horns
- › Insulated Aluminum Baggage Doors with Power Locks
- › Lined Pass-Through Storage Compartments
- › Interlocking Aluminum Framed Slide-Out Houses
- › Interior Paneling with 1-1/2" Insulation
- › Storage Bay Slide-Out Tray (One Side)
- › Storage Bay Slide-Out Tray (Full Pass-Through)
- › Rear Ladder
- › Monaco Full-Length Mud Flap with Stainless Steel Logo
- › 3M Film Front Mask

## OPTIONS

- › Electric Slide-Out Storage Trays (Complete Pass-Through)
- › Interior Sunscreens

## CHASSIS/ENGINE/SUSPENSION

- › Roadmaster S-Series: Semi-Monocoque Chassis
- › Cummins® ISX 525 HP Engine with Allison® 4000 MH 6-Speed World Transmission and Electronic Shifter
- › Torque: (@ 1200 RPM) 1650 lbs./ft. Max. Net
- › Engine Displacement: 912"/ 11.0L
- › Dual Fuel Fill
- › 270 Amp Alternator
- › Rear Axle Ratio: 4:30:1
- › Tires: 295/80R/22.5
- › Polished Aluminum Wheels
- › Full-Cushion Air Glide Suspension with Ten Outboard Air Bags and Ten Bilstein® Shock Absorbers
- › Air Suspension with Ping Tank
- › Automatic Traction Control
- › Air Disc Brake System with ABS
- › Tag Axle with Anti-Lock Braking System
- › Auto Slack Adjusters on Brakes
- › Two-Stage Jacobs Engine Brake
- › Pre-Wire for Supplemental Braking System
- › Engine Block Heater with Switch on Dash
- › Automatic Air Leveling System
- › Undercoating
- › 10,000 Lb. Hitch Receiver and 7/4-Way Trailer Plug
- › Remote Inflation Connector

## OPTIONS

- › Series 60 Detroit Diesel 515 HP Engine with Allison® 4000 MH 6-Speed World Transmission and Electronic Shifter
- › Torque: 1,650 lbs./ft.; 858" Cu. In. Displacement
- › Cummins® ISX 600 HP Engine with Allison® 4000 MH 6-Speed World Transmission and Electronic Shifter
- › Torque: 1,850 lbs./ft.; 912" Engine Displacement
- › ADC RV 2-Position Adjustable Shock System
- › Hydraulic Leveling System (Replaces Air Leveling)
- › Dual Leveling System (Air/Hydraulic)

## COCKPIT

- › Fiberglass Automotive Dash with Eagle Burl Instrumentation Panel, White Dash Gauges with Black Lettering and Gold Bezels
- › In-Dash Stereo with AM/FM Stereo with Multi-Disc CD Changer
- › GPS Navigational System
- › Color Rear Vision System
- › Rear Vision Camera
- › Aladdin™ Video Coach System with On/Momentary Switch
- › CB Radio Prep (Cable and Antenna)
- › Vienna by Verosol Power Window Blinds (Cockpit Only)
- › Power Sunvisors
- › Pilot and Co-Pilot Side Window Manual Sunscreens
- › Power Driver's Side Window
- › Adjustable Brake and Accelerator Pedals
- › Lighted VIP Smartwheel® with Controls for Windshield Wiper System, ICC and Cruise Control
- › Audible Turn Signals
- › Cruise Control Light on Dash
- › Leather Pilot and Co-Pilot Seats with 6-Way Power Adjustments/Heated/Integrated 3-Point Seatbelts/Adjustable Armrests, Electric Headrests; Power Footrest on Co-Pilot Seat; Electric Sliding Seat Cushion and Memory Capabilities on Pilot Seat
- › 12V and 110V Outlet at Dash
- › Carpeted Driver and Passenger Floor Mat

## OPTIONS

- › Air Ride Pilot Seat
- › CB Radio
- › XM Satellite Stereo (Requires Subscription)
- › Sirius Satellite Radio System (Requires Subscription)

# SIGNATURE SERIES

## APPLIANCES AND ACCESSORIES

- › 14 Cu. Ft. 2-Door Refrigerator with Water/Ice Dispenser in Door
- › Recessed High-Output 2-Burner Cooktop with Flush-Mount Covers
- › Spacesaver Convection Microwave with Touch Control
- › Electric TV Antenna
- › Fully Automatic Digital Satellite System with Receiver in Living Area and Bedroom
- › 37" LCD TV Mounted in Living Area Ceiling
- › 32" LCD TV in Bedroom
- › Bose® Wave Radio in Bedroom
- › Bose® Sound System with DVD Player and Surround Sound Speakers
- › Bedroom DVD Player
- › Universal Remote System for Living Area TV
- › Combination Washer/Dryer

## OPTIONS

- › Residential Refrigerator with 4 Additional House Batteries
- › Stack Washer/Dryer (Floorplans TBD)
- › Central Vacuum System
- › Dishwasher Drawer
- › In-Motion Digital Satellite System
- › In-Motion Digital Satellite System with HD-Ready Receiver
- › Exterior 32" Sharp LCD TV (N/A: 44 Cardinal III)

## INTERIOR

- › Stained or Natural Oak Cabinetry
- › Lined Cabinet Shelves
- › Dinette Wall Cabinet with Solid Surface Top
- › Built-In Storage Area for Kitchen Countertop Covers
- › Bedroom Dresser with Raised Panel Drawer Faces
- › Clothing Hamper in Bedroom
- › Low-Friction Roller Drawer Guides
- › Radiused Ceiling Design with Accents in Living Room and Bedroom
- › Corian® Countertops Throughout with Serpentine, Dripless Edge
- › Integrated Corian® Sinks in Vanity and Galley
- › Ceramic Tile Backsplash in Galley and Bath Areas
- › Corian® Countertop Shelf at Living Room Side of Kitchen Countertop
- › Power Silhouette Shades in Living Room and Dining Area
- › Day/Night Shades with Blackouts in Bedroom
- › Designer Vinyl Wallpaper Throughout
- › Corian® Cutting Board
- › Two-Tiered Silverware Drawer Divider
- › Designer Textured Carpet in Living Area and Bedroom
- › High-Gloss Tile Floors in Galley and Bath
- › High-Gloss Tile Flooring in Cockpit Area
- › Raised Panel Door for Private Bath
- › Bedspread and Pillows
- › Nightstands with Corian® Countertops
- › Corian® Windowsills in Living Area
- › Decorative Cabinetry Hardware
- › Decorative Hardwood Slide-Out Fascia

## OPTIONS

- › Interior Decors: Malibu Sand II, Cayenne Spice, Amber Slate, Aqua Topaz
- › Ralph Lauren Decors: Landsdown II, Black Pearl
- › Spiced or Natural Maple, and Natural, Stained or Classic Cherry Cabinetry
- › Ceiling Fan in Bedroom
- › Large Bay Window in Living Area (Replaces Living Area Overheads on Driver and Passenger Side)
- › Sculptured Carpet Design in Living Room
- › Open Bath (42 Chateau IV)
- › Drop-in Glass Vanity Sink

## FURNITURE

- › Legless Side-Slide Solid Surface Dinette Table with Two Freestanding Dinette Chairs and Two Folding Chairs
- › Roadside: Fabric Sleeper Sofa
- › Curbside: Leather J-Lounge with Drawer and Ottoman with Storage
- › Additional Bedroom Wardrobe (44 Conquest IV)
- › Queen Bed with Pillowtop-Hinged Mattress

## OPTIONS

- › King Bed (70" x 80")
- › Queen Air Mattress with Digital Remote
- › King Air Mattress with Digital Remote
- › Roadside: Leather Euro-Recliner with Ottoman
- › Roadside: Glider Recliner with Ottoman
- › Roadside: Leather Sleeper Sofa with Drawer
- › Roadside: Computer Desk with Leather Euro-Recliner
- › Roadside: Leather Hide-a-Bed
- › Roadside: Leather Hide-a-Bed with Air Mattress
- › Fabric/Leather Sectional Booth Dinette Ensemble
- › Computer Desk in Bedroom with Bedroom Chair (44 Conquest IV)



## ELECTRICAL SYSTEMS AND LIGHTS

- › 50 Amp 120/240V Distribution Panel and Power Cord with Quick Disconnect
- › Onan® 12.5 kW QD Generator on Power Slide-Out Tray with Auxiliary Start Switch and Automatic Temperature Start
- › 2,800 Watt Pure Sine Wave Inverter with Auto Gen Start and Auto Temp Start
- › Halogen Map Lights above Driver/ Passenger Seating
- › Decorative Lighting in Living Area and Bedroom
- › Cosmetic Vanity Lights in Bathroom
- › Halogen Lights in Headboard above Bed
- › Halogen Lighting under Living Room and Dinette Overhead
- › Halogen Lighting in Ceiling Throughout
- › Accent Rope Lighting Throughout Coach
- › Lighted Utility Center
- › Underhood Utility Light
- › 120V Outlet in Private Bath
- › 120V Outlet in Bed Base
- › 120V Receptacles inside Storage Compartment
- › Porch Light
- › Doorbell
- › Lights in Outside Storage Compartments
- › Four 6V House Batteries
- › Two 12V Chassis Batteries
- › Surge Guard™ Automatic Transfer Switch
- › Multiplex 12V Wiring for Dash and Throughout Interior of Coach
- › 100 watt Solar Panel

### OPTIONS

- › Glass Matt Batteries (Replace House and Chassis Batteries)

## PLUMBING AND LP SYSTEMS

- › Central Water Purifier in Service Compartment
- › Manabloc Water System for Entire Coach
- › Insulated Systems Compartment with Easy Access to Hook-Up
- › Water Pump Switch in Galley, Bathroom and Service Bay
- › Winterization Valving System
- › China Toilet
- › Super Service Center
- › Corian® Shower with Tile Accents and Shower Caddy
- › Rain Shower Head with 4 Adjustable Wall Sprayers
- › Shower Head Volume Control
- › RV Sani-Con Tank Drainage System
- › Black Holding Tank Rinsing System
- › Outside Faucet with Hot and Cold Water
- › Power Water Hose Reel
- › Soap Dispenser in Kitchen
- › Insta-Hot® Water System in Kitchen

### OPTIONS

- › Ozone Water Filter at Kitchen Sink
- › Bathtub

## HEATING, VENTS AND AIR CONDITIONING

- › Aqua-Hot® Heating System
- › Three Low-Profile Ducted 15M BTU Roof Air Conditioner with Wall Thermostat and Heat Pump
- › Electronic Air Conditioner/Heat Climate Control System
- › Center Defroster Vents
- › 12V Attic Fan with Wall Thermostat and Rain Sensors in Bathroom, Private Lavatory and Kitchen

### OPTIONS

- › One Low-Profile 110V Baseboard Heater (N/A: 40 Platinum IV)

## WINDOWS, DOORS AND AWNINGS

- › Flush-Mount Radius Dual Pane Safety Glass Dark Tinted Windows
- › Front Entry Door with Air Seal and Removable Top Screen
- › Keyless Remote Entry System with Pocket Remote
- › Tinted Skylight in Bathroom
- › Girard® Front Door Awning
- › Topper Slide-Out Awnings, All Houses
- › Roof-Mounted Girard® Automatic Front Patio Awning
- › Roof-Mounted Girard® Automatic Rear Patio Awning
- › Girard® Window Awnings on all slide-out house windows

### OPTIONS

- › Roof-Mounted Girard® Automatic Rear Patio Awning
- › Girard® Window Awnings on all slide-out house windows

## SAFETY

- › Back-Up Alarm
- › Fire Extinguisher
- › Deadbolt Lock on Entrance Door
- › Lighted Interior and Exterior Grab Handles
- › 120V GFI Protected Circuit
- › LP Gas Detector
- › Smoke Detector
- › Carbon Monoxide Detector
- › Integrated Pilot and Co-Pilot Three-Point Seatbelts
- › Third Brake Safety Light
- › Egress Window
- › Security Safe
- › Deluxe Security System

### OPTIONS

- › Collision Avoidance System

SIGNATURE SERIES



COME ON, FELLOW TRAVELERS. Haven't you waited long enough to drive your dream? It's your turn now. And Monaco is here to make it all happen. With high-line, high-performing coaches that lead the way in quality, comfort and safety. So grab a road atlas and climb aboard. The coach of your dreams is just ahead.



DEALER:



MONACO®

DRIVING YOUR DREAM.

91320 Coburg Industrial Way, Coburg, OR 97408 | 800 634-0855

[www.monacocoach.com](http://www.monacocoach.com)

Monaco Coach Corporation is traded on the NYSE under the listing MNC. | 0606 NPN: BROMSIG