



Diesel pusher features in
a gas-powered motor home.





39C-Silver Brocade with Salem Cherry

Take a fresh look.

Completely redesigned for 2002, Winnebago Chieftain is causing quite a stir in luxury motor home circles. It's loaded with refined, upscale amenities and comforts that you would expect in the flagship of the Winnebago family. But what really sets Chieftain in a class of its own are its innovative floorplans. This floorplan flexibility is made possible by the 22,000 GVWR Workhorse™ chassis. Its 340-hp GM® Vortec™ 8100 gasoline engine with Allison® transmission provides outstanding power and torque, and its front-mounted position allows for flat-floor bedroom designs and improved exterior storage.



39T



39C-Silver Brocade with Salem Cherry

Spacious comfort.

You'll have plenty of room to enjoy your surroundings and relax in the comfort of premium-designed furniture thanks to the spaciousness created by the StoreMore® slideroom. Choose the available leather furniture upgrade for an added touch of elegance. Chieftain features the advanced design of the basement-mounted TrueAir™ Residential Central Air Conditioning system for superior climate control. Interior storage is plentiful with beautiful cabinetry designed to optimize usable storage space. For added durability, cabinets feature a catalyzed finish usually reserved for high-end residential cabinets.

Pleasant dreams.

The rear bedroom area incorporates a standard queen bed slideout to create an open and roomy retreat. A spacious wardrobe with mirrored doors and a separate vanity are standard as is additional storage under the bed. The 39C, 39L and 39T feature a second wardrobe in the slideout room. Additional upgrade features include a stereo with cassette or CD, bedside nightstands and a decorative ceiling light with a dimmer switch.

Prime viewing.

You're ready for the big game or your favorite movie with this elegant entertainment center. It features a 32" stereo TV and is standard on the 39C, 39L and 39T. Other standard entertainment features include a theater sound system with QSURROUND™ 5.1 sound, stereo VCR and video selection system. Available upgrades include a manual or automatic digital satellite system and DVD player.

Multiple personalities.

The Rest Easy™ Multi-Position Lounge offers flexibility and comfort. It starts as a plush couch. At the touch of a button it becomes a relaxing recliner with pull-out ottoman. Touch the button again and presto: a comfortable 60" x 75" contoured bed. Rest Easy is also available in leather, and leather with the dual recline feature.



(Available in the 36W & 39T)



Any way you want it.

This multi-purpose area has ample storage and can be used as a vanity or desk area with telephone and electrical ports. A standard 19" bedroom TV tucks away in its own cabinet when not in use.

PRACTICAL FEATURES FOR CAREFREE LIVING



Created for RVers.

Winnebago Industries' engineers worked closely with the radio manufacturer to create the RV Radio™—a radio designed specifically for motor home applications. Chieftain's AM/FM stereo radio has both a cassette and CD player. Large control knobs and buttons are easy to operate. A weather band feature provides weather updates at the touch of a button.



Spread the cool around.

Interior climate control has never been more precise, thanks to Winnebago Industries TrueAir Residential Central Air Conditioning. It utilizes superior cooling technology to supply optimum comfort to every part of the coach. At the heart of the system is a Coleman®-Mach® cooling unit, which is located below the floor line of the coach. The unit provides a lower vehicle profile and center of gravity, plus reduced interior noise and an easier access for service. On cool days, the available heat pump provides heat, minimizing the need to use LP.



Cook up a storm.

This innovative U-shaped galley features Corian® countertops with a Swanstone™ solid surface sink and a Moen® single-control faucet with pull-out sprayer. Spacious cabinetry, a residential microwave/convection oven, dual-burner recessed range top with Corian cover and recessed fluorescent lighting are also standard. A built-in dishwasher is available in the 39C, 39L and 39T.



Cool choices.

A double-door refrigerator with icemaker and accompanying pull-out pantry is standard. Choose the available 4-door refrigerator for even more cold storage.



At your command.

Designed for ergonomic comfort, the dash area places driving controls at your fingertips. Standard features include a dash-mounted rearview monitor with audio, electronic compass and external temperature indicator; auxiliary 12-volt powerpoint; and a convenient center-mounted console. The available Alpine® GPS mapping system takes the guesswork out of navigation.



Ride in comfort.

The low-clearance motor cover provides easy access to the high-back custom Stitchcraft luxury leather cab seats. They feature adjustable lumbar support for a perfect fit. Available upgrades include a six-way power assist on the driver seat and a footrest on the passenger seat.



Freshen up.

The walk-through bath area with private toilet has a solid surface countertop and an angled shower with textured glass shower door.



Skip the laundromat.

The available built-in combination washer/dryer features multiple wash and time and temperature cycles for a wide variety of fabrics.



Instant shade.

The available electric awning extends with the touch of a button.



Easy cleanups.

The service compartment includes an exterior wash station for rinsing off equipment or sandy feet. All features are packaged for user friendliness and easy access with clearly labeled controls. Other major plumbing connections and service functions are located in a separate compartment that's heated for extended seasonal use.

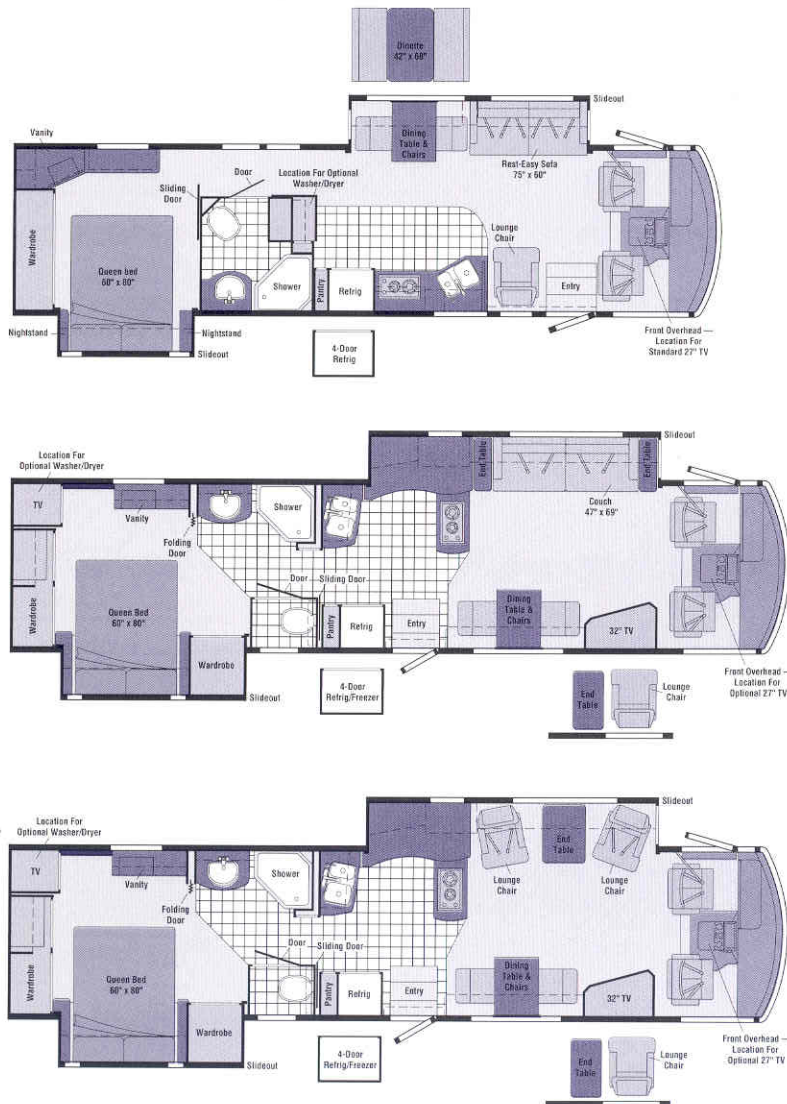
EXTERIORS DESIGNED FOR TRAVEL



It's great outside.

Chieftain's one-piece fiberglass sidewall is amazingly tough—another typical Winnebago Industries design. Stabil-Ride suspension, wide stance and variable ratio steering help ensure a smooth ride. While parked, hydraulic jacks keep the Chieftain stable and level. Also available: an electric awning for instant shade.

FLOORPLANS



INTERIORS

36W Available January 2002

- Sofa/dining table **STOREMORE** Slideout System
- Bedroom area slideout
- Large private bath with vanity and angled shower
- Bedroom desk/vanity area with chest of drawers, tip-out hamper and built-in TV
- **REST EASY** Multi-Position Lounge

39C NEW!

- Sofa/galley **STOREMORE** Slideout System
- Bed/wardrobe slideout
- Entertainment center with 32" TV or available hoop-base lounge chair with end table
- Walk-through bath design with private toilet area

39L NEW!

- Lounge chairs/galley **STOREMORE** Slideout System
- Bed/wardrobe slideout
- Bedroom desk/vanity area
- Entertainment center with 32" TV or moveable hoop-base lounge chair and table



Saratog



Venice Green



SPECIFICATIONS

	36W	39C NEW	39L NEW	39T NEW
Length	36'6"	39'6"	39'6"	39'6"
Exterior Height*	11'9"	11'9"	11'9"	11'9"
Exterior Width ^Δ	8'5.5"	8'5.5"	8'5.5"	8'5.5"
Exterior Storage [°] (cu. ft.)	70†	130	130	130
Interior Height	6'8"	6'8"	6'8"	6'8"
Interior Width	8'0.5"	8'0.5"	8'0.5"	8'0.5"
Fresh Water Capacity w/Heater* (gal.)	80	80	80	80
Holding Tank Capacity - Black/Gray (gal.)	45/67	48/58	48/58	48/58
LP Capacity [◇] (gal.)	28	28	28	28
Fuel Capacity (gal.)	75	75	75	75
GCWR (lbs.)	26,000	26,000	26,000	26,000
GVWR (lbs.)	22,000	22,000	22,000	22,000
GAWR - Front (lbs.)	8,500	8,500	8,500	8,500
GAWR - Rear (lbs.)	15,000	15,000	15,000	15,000
Wheelbase	228"	266"	266"	266"

Standard - S Optional - O

36W 39C 39L 39T

36W 39C 39L 39T


AUTOMOTIVE/CHASSIS

Chassis - Workhorse™ 8.1L Vortec V8 engine, 340 hp, Allison® 1000 Series™ 5-speed overdrive transmission, 145-amp alternator, 4-wheel anti-lock brakes	S	S	S	S
Leveling Jacks hydraulic, manual touch pad, Tire Tool wrench, Trailer Hitch □ 5000-lb. drawbar/500-lb. maximum vertical tongue weight & wiring, Wheels stylized aluminum (4) steel (2)	S	S	S	S

CAB AREA & DRIVER CONVENIENCES

Cab Seats (Leather) w/3-point adjustable seat belts, adjustable armrests, lumbar support, multi-adjustable slide/recline, swivel, Cigarette Lighter/12-Volt Electrical Supply, Compass electronic w/outdoor thermometer, Convenience Tray, Defroster Fans (2) auxiliary 2-speed w/instrument panel switch, Door driver w/power window & lock w/remote, Floor Mats carpet driver & passenger, Map Lights (2), Monitor System rearview w/single camera & 1-way audio, Sony® Shades filtering roller shades, cab windows, Steering Wheel custom w/tilt & power assist, Sunvisors (2), Trim Panels (driver) leveling system controls, power door locks, power window, exterior mirror heat & adjust controls & cupholder, (passenger) ledge w/cupholder, Window (passenger) full slider w/screen, dual-glazed, Windshield Wipers intermittent	S	S	S	S
Cab Seat Pedestal 6-way power assist (driver)	O	O	O	O
Cab Seat passenger w/footrest	O	O	O	O
GPS Mapping System* Alpine®	O	O	O	O
Workstation pull-out, passenger side	O	O	O	O

ENTERTAINMENT

CB Prep w/antenna, antenna lead, 12-volt power supply, Entertainment Center (Exterior) w/Cassette DC receptacle, AC duplex receptacle, AM/FM radio, TV jack, radio antenna, speakers (2), lockable compartment,  (Cab) AM/FM stereo, cassette/CD player, weather band, roof-mounted, flexible rubber antenna, speakers (4), Radio Power Switch main/auxiliary battery, Satellite System Ready, Sound System deluxe, w/QSurround™ amplifier, cube speakers (4), sub-woofers (2), Telephone input & interior jacks, TV 19" Color AC w/remote, bedroom, TV Enhancement Package antenna (amplified), interior jack(s), coax wiring, cable input, antenna check reminder light, exterior antenna jack, VCR stereo w/remote,* Video Selection System	S	S	S	S
Entertainment Center TV 32" color AC stereo w/remote	S	S	S	S

GALLEY

Coffemaker, Faucet single-control w/pull-out sprayer, Light ceiling, fluorescent w/decorative wood frame, Dining Light decorative w/dimmer, Light fluorescent, under cabinet, Microwave/Convection Oven w/Range Fan residential 30," Sharp,* Pantry* slideout w/adjustable shelves, Range Top 2-burner recessed, Seaward,* Range Cover flush-mounted (Corian® countertop material), Refrigerator/Freezer large double-door w/icemaker, Norcold,* Roof Vent powered ventilator fan, Silverware Tray, Sink double-bowl molded Swanstone™ w/Corian® sink covers, Towel Rack, Wall Border, Wastepaper Basket w/pull-out tray, Water Purification System Everpure® w/separate faucet	S	S	S	S
Countertop Glass Partition end of galley	S			
Dishwasher built-in under countertop		O	O	O
Refrigerator/Freezer* 4-door w/icemaker, Norcold	O	O	O	O
Utility Tray tip-out	S	S	S	

BATH

Cabinet lavatory, Cabinet medicine, Faucet (lavatory) single-control, Faucet (shower) single-control w/fixed shower head, Hair Dryer wall-mounted w/night-light, Light shower, Lights makeup, Roof Vent power, Shower, Shower Door textured glass, Shower Skylight, Sink oval, Tissue Holder, Toilet (Porcelain) w/foot-pedal flush & sprayer, Towel Rack 3-rod, mounted to door, Towel Ring	S	S	S	S
Cabinet linen, Magazine Rack, Roof Vent powered ventilator fan, Towel Bar, Wall Border all located in private toilet area	S	S	S	
Mirror frameless w/beveled edge	S			
Shower Package handheld showerhead, fold-down shower seat	O	O	O	O

BEDROOM

Bed queen, Serta,* innerspring, w/underbed storage, Bedspread pillow shams, throw pillow, fabric headboard w/wood trim, Ceiling Molding, Hamper pull-out, Light decorative w/dimmer switch, Lights decorative wall lamp(s), Nightstand, Vanity Cabinet w/drawers & tip-up mirror, Wall Border, Wardrobe Cabinet carpeted, clothes rod, drawers (NA 36W), light, shelf	S	S	S	S
---	---	---	---	---

Compact Multi-disc Changer Sony 10-disc changer w/remote				
DVD (digital video disc) player	0	0	0	0
Entertainment Center (Exterior) w/CD Player DC receptacle, AC duplex receptacle, AM/FM radio, TV jack, radio antenna, speakers (2), lockable compartment	0	0	0	0
Satellite Dish Antenna Winegard® RV digital, digital elevation sensing unit, manual	0	0	0	0
Satellite Dish Antenna Winegard, RV digital, digital elevation sensing unit, power	0	0	0	0
Stereo System (Bedroom)* AM/FM cassette, alarm clock	0	0	0	0
Stereo System (Bedroom)* AM/FM CD player, alarm clock	0	0	0	0
TV 27" Color AC Stereo w/remote, front overhead w/storage area	5	0	0	0

INTERIOR

Clock, Lights ceiling, incandescent w/wall switches, Lights fluorescent lights, recessed, galley, lounge, bath, hallway w/wall switches, Lights halogen, under overheads, Lights reading, Picture, Shades front wraparound, Shades day/night pleated in lounge & bedroom areas, micro-mini blind in galley area, Windows dual-glazed/thermo-insulated, Accessory Package rechargeable flashlight, rechargeable vacuum cleaner	5	5	5	5
Central Vacuum Cleaner	0	0	0	0

CABINERY

Woodgrain Portsmouth Oak stile-and-rail construction w/raised panel inserts on upper & lower doors	5	5	5	5
Woodgrain Salem Cherry stile-and-rail construction w/raised panel inserts on upper & lower doors	0	0	0	0

COUNTERTOPS

Corian® galley, Solid Surface bath, bedroom, dinette	5	5	5	5
--	---	---	---	---

FLOORCOVERING

Carpeting w/pad, Vinyl Tile galley & bath	5	5	5	5
---	---	---	---	---

FURNITURE

Couch (Fabric) w/throw pillows & end tables		5		
Couch (Leather) w/throw pillows & end tables		0		
Lounge Chair (Fabric) hoop-base rocker, recliner w/footrest on passenger side	5			
Lounge Chair (Fabric) hoop-base rocker, recliner w/footrest & end table on passenger side		0	0	0
Lounge Chair (Leather) hoop-base rocker, recliner w/footrest & end table on passenger side		0	0	0
Lounge Chairs* (2) (Fabric) Flexsteel w/end table on driver side			5	
Lounge Chairs* (2) (Leather) Flexsteel w/end table on driver side			0	
RestEasy Multi-Position Lounge (Fabric)		5		
RestEasy Multi-Position Lounge (Leather)		0		
RestEasy Multi-Position Lounge (Fabric) w/throw pillows & Lounge Chair (Fabric) hoop base				5
RestEasy Multi-Position Lounge (Leather) w/throw pillows				0
RestEasy Multi-Position Lounge (Leather) w/dual recliners and throw pillows	0			
Lounge Chair (Leather) hoop base				0
Dinette (Fabric)	0			
Dining table & chairs (2) free standing, (2) folding-table w/extendable self-storing leaf	5	5	5	5

* The height of each model is based on the curb weight of a typically equipped unit on the standard chassis. The actual height of your vehicle may vary by as much as 2" depending on chassis or equipment variations.
 Δ Chieftain floorplans feature a widebody design—over 96" in making your purchase decision, you should be aware that some states restrict access on some or all state roads to 96" in body width. Before making your purchase decision, you should confirm the road usage laws in the states of interest to you. *Not all items available in combination. See dealer for details.
 † Capacities shown are tank manufacturer's listed water capacity (W.C.). Actual filled LP capacity is 80% of listing due to overfilling prevention device on tank. ** See your dealer for complete warranty documentation information.
 □ Actual towing capacity is dependent on your particular loading and towing circumstances which includes the GVWR, GAWR & GCWR as well as adequate trailer brakes. Please refer to your vehicle's operator's manual for further towing information.
 ○ Your motor home's load capacity is designated by weight, not by volume, so you cannot necessarily use all available space when loading your motor home. NA=Not Available.
 Winnebago Industries' continuing program of product improvement makes specifications, equipment, model availability and prices subject to change without notice. Comparisons to other motor homes are based on the most recent information available.
 † Measurements are based on the most recent information available. See your dealer for updated specifications.

Awning* patio, Awning Rails, Door entrance, w/separate screen door, deadbolt lock, Door fuel-fill, locking, Entrance Door Steps double, electric w/doorjamb switch, Exterior Graphic Packages Moss Green Metallic or Medium Titanium Metallic, Ladder, Lights docking lamps, Lights fog lamps, Lights porch light w/interior switch, Light service, driver side, Light under hood, Mirrors electric remote w/defrost, Mudflaps rear, Receptacle AC duplex, Sidewall Skin 1-piece smooth, fiberglass, high-gloss, Storage Compartments smooth valance panels, trunk liner, TriMark KeyOne™ System opens driver door, entrance door, fuel-fill door, gravity water fill door & storage compartments, lights	5	5	5	5
Air Horns roof-mounted		0	0	0
Awning* electric, patio, A&E® OneStep™		0	0	0
Spotlight roof-mounted w/wireless remote		0	0	0

SYSTEMS

Automotive Heater/Air Conditioner, Auxiliary Start Circuit, Batteries (Coach) (3) deep cycle, Battery (Coach) disconnect system, Battery Charge Control automatic dual, Drain 1" water tank, Electrical Distribution System AC & DC breaker panels, Furnace 40,000 BTU, low profile, Generator 7,000 watt, Onan® Marquis Gold™, gas, Generator Prep Kit, Generator/Shoreline Automatic Changeover Switch, Inverter/Charger DC/AC, 2,000 watt w/remote panel, ONEPLACE™ Systems Center wall-mount, battery digital voltmeter, POWERLINE™ energy management display, generator hourmeter gauge, generator start/stop switch, heating/AC thermostat, holding tank levels, LP tank level, solar panel/battery charger light, water heater switch, water heater on light & pilot indicator light, water pump switch, water tank level, Power Cord 50-amp cord, POWERLINE™ Energy Management System, Powerpoint 12-volt, Service Center (Electrical/Water) cable TV input, city water hookup/tank diverter fill, drainage valves, exterior wash station w/pump switch, power cord, sewer hose, telephone input, monitor panel, Solar Panel 10 watt w/battery charger, Tank flushing system, black tank only, Tank holding, heated compartment, Tank LP, permanent mount w/gauge, TRUEAIR™ Central Air Conditioning System, Water Heater 10-gallon electronic ignition, LP gas/110 vac w/Motoraid, Water Heater Winterization Bypass Valve manual, Wash Station exterior, Washer/Dryer Prep, Water Pump demand, Water System Winterizing Valve manual, Water Tank Fill gravity w/locking door, Water Tank Fill pressurized city hookup w/diverter valve	5	5	5	5
Generator 7,000 watt, Onan Marquis Platinum™, gas		0	0	0
Home Comfort Plus Package central air heat pump, auxiliary automotive heater, insulated power ventilator fans, (bath & galley)		0	0	0
Washer/Dryer Combination		0	0	0
Water System Winterizing Kit , automatic		0	0	0

SLIDEOUT

Slideout Room hydraulic powered, front (sofa/dining table) flat-floor slideout, w/slidoor cover, STOREMORE™ , Slideout Room rear (bed) w/slidoor cover		5		
Slideout Room hydraulic powered, front (lounge/galley) flat-floor slideout, w/slidoor cover, STOREMORE™ , Slideout Room rear (bed/wardrobe) w/slidoor cover			5	5

SAFETY

Assist Bar interior, Assist Handle exterior, acrylic, Bumpers front & rear, Detectors/Alarms LP leak, smoke, carbon monoxide, Fire Extinguisher 10 B.C., Ground Fault Interrupter, Light center high-mount stop lamp, Light(s) courtesy w/wall switch(es), Window escape, Windshield laminated safety glass	5	5	5	5
--	---	---	---	---

WARRANTY

12-month/15,000-mile basic warranty, 36-month/36,000-mile warranty on structure,** 10-year limited parts & labor warranty on roof	5	5	5	5
--	---	---	---	---

Not all motor homes are created equal.

As you take a closer look, you'll see that there is much more to the Winnebago Chieftain than a long list of standard features and compelling floorplans. Beneath it all you'll find a SuperStructure™ foundation of strength and durability, and Winnebago Industries' recognized service and warranty support.

We are committed to service.

We back our motor homes with the best after-the-sale service in the industry.

- 12-month/15,000-mile basic limited warranty
- 36-month/36,000-mile warranty on structure
- Standard 10-year limited parts-and-labor roof warranty
- Complimentary 24-hour Roadside Assistance Program
- TripSaver emergency warranty parts shipments
- National Dealer service network



Certified quality.

Recreation Vehicle Dealer Association members annually rate RV manufacturers on the quality of their products, and on their sales and service support. Winnebago Industries has achieved the coveted Quality Circle award every year since its inception, the only major motor home manufacturer to do so.



Learn more about what sets Winnebago Industries apart.

Ask your dealer for this guide. It will help you learn what makes Winnebago Industries motor homes distinctly superior to other brands.



Warning: Joining WIT has been known to cause excessive fun.

Winnebago-Itasca Travelers (WIT) is a club for owners of Winnebago Industries motor homes. WIT is a great way to meet people and offers you:

- Caravans and rallies
- Local and state group activities
- Benefits for RVers



SuperStructure

is the term given to Winnebago Industries' structural motor home design and construction. Rather than a single component, it is the culmination of design integration that incorporates steel and aluminum substructures, composite design laminated floor risers, interlocking joint technology, and Thermo-Panel® floor, roof and sidewalls to form a high-strength, durable vehicle body.



Interlocking joint construction utilizes advanced extruded aluminum structural components to create integrated floor-to-sidewall, and sidewall-to-roof joints. This design effectively distributes the weight of the walls and roof, making a stronger and more durable body than competitor designs that rely on screws to carry the weight.

Laminated risers feature a welded aluminum core for superior strength and provide a stable base for the floor structure and storage compartments.

Storage compartments attach to outrigger assemblies so the weight of stowed items is carried and disbursed throughout the foundation substructure.

Critical steel components are treated using an advanced electrodeposition coating process that provides superior corrosion protection.

The foundation substructure assembly is precision-aligned to maximize strength and cross-coach support as well as durability.

A steel barrier separates occupants from the engine compartment. Believe it or not, less advanced designs actually use wood in this critical application.

Windshields are mounted in steel with non-hardening sealants for superior strength, safety and durability. Some manufacturers actually use a rubber gasket to hold the windshield to a fiberglass cap.

The all steel cab features integral A and B pillars for added strength and stability.

Built to a higher standard.

Chieftain features a crowned, one-piece fiberglass roof backed with a 10-year limited parts-and-labor warranty. Fiberglass offers superior strength, attractiveness and durability over rubber roofs found on many competitive models. Over time, rubber roofs are susceptible to chalking, streaking and degradation, and have less puncture and tear resistance than fiberglass.



One-year-old competitor's rubber roof



One-year-old Winnebago Industries fiberglass roof



©2001 Winnebago Industries, Inc., Forest City, IA 50436. Printed in USA.

Seat belts are your most important hookup. Always buckle up.
Visit us at www.winnebagoind.com