

2017 FLEETWOOD DISCOVERY/DISCOVERY LXE

2017

CLASS A DIESEL



# DISCOVERY/DISCOVERY LXE



REVGROUP



# 21 REASONS WHY FLEETWOOD IS AMERICA'S FAVORITE

Mile after mile, decade after decade, more families trust Fleetwood. The open road is our proof. With more Fleetwood motorhomes on the road today than any other manufacturer\*, our brand prides itself on building dependable products that help families reconnect one journey at a time — over and over again. At Fleetwood, we constantly redefine value because understanding your every need is just the start to delivering peace-of-mind at every turn.



## **F-21 Advantage: Fleetwood 21<sup>st</sup> century engineering, manufacturing, and materials**

Fleetwood RV offers a 21<sup>st</sup> century, industry-leading advantage—a quality construction approach to motorhome engineering, manufacturing and materials. The “F” stands for Fleetwood RV. The “21” stands for 21<sup>st</sup> century materials and construction techniques. F-21 is demonstrated by 21 key proof points that deliver unique advantages to Fleetwood owners and illustrate the quality for which Fleetwood RV is known industry-wide.

\*Based on IHS Automotive, Polk Recreational Vehicles in Operation (RVIO) as of 7/1/13.



The Discovery 37R is shown in Celestial Reflection décor and High-Gloss Autumn Wheat cabinetry.



# DISCOVERY

In every corner of this Class A diesel motorhome, you'll uncover amenities that were never meant for the road. The 2017 Discovery tips the scales in creature comforts, especially in the galley, where an induction cooktop, residential refrigerator and standard dishwasher create a culinary masterpiece. And we didn't leave all of the special ingredients for just the galley. Discover polished porcelain tiles and high-gloss, solid-hardwood cabinetry throughout the coach.

## TOP FEATURES

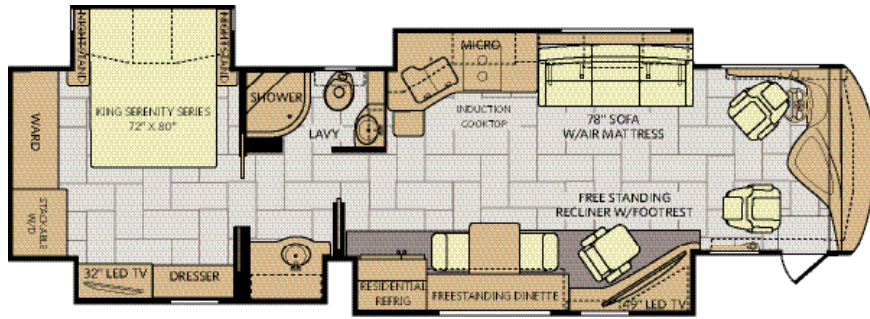
- Power Bridge Chassis® on the Freightliner® XCM Series
- ISB 6.7L 360 HP with 800 ft-lb Torque
- Firefly Integrations Electronic Control System
- High Gloss Solid Hardwood Cabinetry
- Induction Cooktop
- Polished Porcelain Tile Throughout
- Residential Refrigerator
- Dishwasher
- 3<sup>RD</sup> Air Conditioner (39G Only)
- Power Water Hose Reel & Power Cord Reel
- Awning with LED Light Strip & Wind Sensor React
- BOSE™ Soundbar



# DISCOVERY EXTERIORS CHOICES & FLOORPLANS

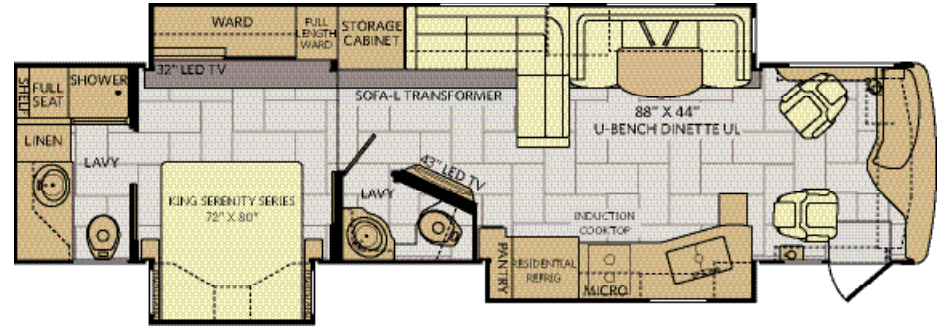
37R

Options: 087, 191, 830



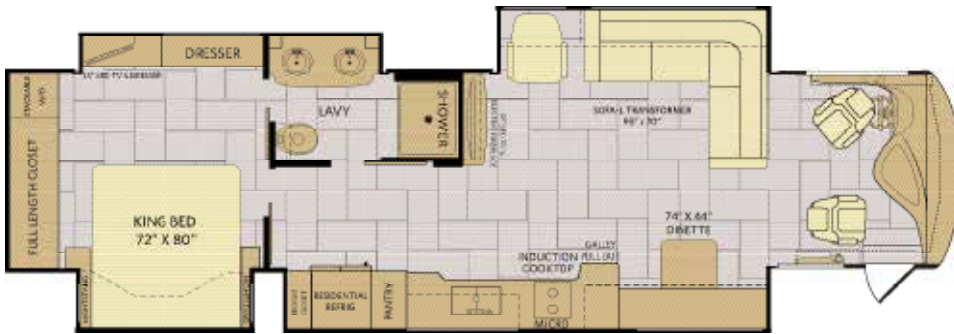
38K

Options: 087, 833



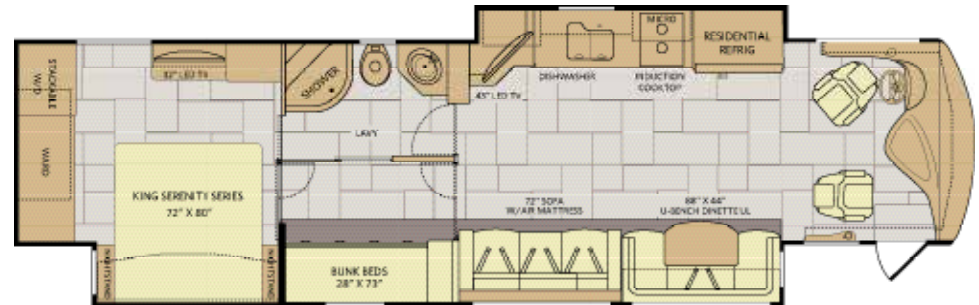
39F

Options: 203, 830



39G

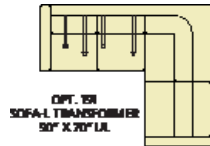
Options: 087, 833



Available Options



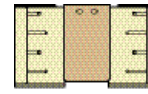
OPT. 087  
FRONT 32"  
LED TV



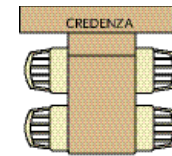
OPT. 191  
SOFA-L TRANSFORMER  
90" X 70" UL



OPTION 203  
95" X 70" SOFA



OPT. 830  
FACING DINETTE



OPT. 833  
FREE-STANDING DINETTE  
WITH CRENZIA

Black Streak



Polar Champagne



Shadow Gray



White Sand





# DISCOVERY STANDARDS & OPTIONS

## INTERIOR THROUGHOUT

- 20,000/25,000 BTU/ H Dual Furnaces (39G)
- 25,000/25,000 BTU/ H Dual Furnaces (37R)
- 25,000/30,000 BTU/ H Dual Furnaces (38K, 39F)
- 84' Interior Ceiling Height
- Auto Generator Start
- Central Vacuum System
- Dedicated Full-Length, Metallic A/C Ducting
- 2 Roof-Mounted, High Efficiency A/C w/Solar Panel & Bedroom Heat Pump (37R, 38K, 39F)
- 3 Roof-Mounted, High Efficiency A/C w/Solar Panel & Bedroom Heat Pump (39G)
- Fan-Tastic Power Roof Vent w/Wall Switch
- Firefly Integrations Electronic Control System
- Flat Interior Ceiling
- Tuff-Pex Plumbing System
- Demand Water Pump w/Filter
- Whole-Coach Water Filtration System
- Deluxe Roller Bearing , Full-Extension Drawer Guides & Transit-ship Locks
- Hardwood Cabinet Face Frames, Doors & Drawers
- Hardwood Crown Molding
- Hardwood Finish Return Air Intake for Furnace
- Manual Day/Night Double Roller Shades
- Satellite Radio (Subscription Required)
- Polished Solid Surface Countertop
- Tile Flooring Throughout
- Passenger Armrest w/Integrated Magazine Rack
- Power Passenger Chair w/Footrest
- Truma - Tank less Water Heater

### OPTIONS

- CSA Package (Canadian Specs)\*\*

## DRIVER CONVENIENCE

- (2) 12V Power Outlet at Dash
- 110V Power Outlet at Dash & Passenger Area
- USB Charger (Driver Side)
- Automotive Warp-Around Dash
- Driver Left-Console w/Lower Storage Bin
- 3-Point Seatbelts at Driver & Front Passenger Seat (w/Adjustable Shoulder Straps)
- Auxiliary Start Circuit Switch
- Battery Disconnect System
- Cruise Control
- Denso High-Output Auto A/C Heater Combo
- Dual Dash Monitors
- Easy-Access Battery Disconnect Switch
- Front Power Roller Shades/Blinds
- Manual Driver & Passenger Roller Shade/Blinds
- Power Entry Step Cover
- Radio Switch Main/Auxiliary Power
- Remote Heated Chrome Power
- Exterior Mirrors w/Turn Signal & Side-View Cameras
- Smart Steering Wheel w/Tilt & Telescoping
- Touch Screen Radio w/Built-in GPS
- Villa Driver/Passenger Soft-touch Captain's Chairs w/Reclining Back & 6-Way Power controls

## SAFETY/CONVENIENCE

- 30" Wide Entry Door
- Carbon Monoxide Detector/Alarm
- Central Electrical Panel
- Energy Management System (EMS) w/Soft Start
- Fire Extinguisher
- Multiple Seatbelt Locations
- Neutral Loss Protection
- Propane Detector/Alarm
- Smoke Detector/Alarm

## LIVING ROOM

- 43" LED HDTV (38K, 39G)
- 49" LED HDTV (37R, 39F)
- TV Antenna w/Signal Booster
- BOSE Sound bar & Blu-Ray DVD Player
- Wall to Wall High Gloss Tile Flooring
- U-Shape Dinette (38K, 39G)
- Facing Dinette w/Credenza (37R, 39F)
- Expandable L-Sofa w/Air Mattress (39F)
- Expandable L-Sofa w/Jack-Knife (38K)
- Sofa w/Air Mattress (Queen) (37R, 39G)
- Euro Chair (37R)

### OPTIONS

- Expandable L-Sofa w/Jack-Knife Footrest (37R)
- Sofa w/Air Mattress (Queen) (39F)
- Booth Facing Dinette (37R, 39F)
- Facing Dinette w/Credenza (38K, 39G)

## GALLEY

- 22 cu ft. Residential Refrigerator w/Two Additional Batteries & 2800 Watt Inverter
- Induction Cooktop
- Adjustable Cabinet Shelf (Select Cabinets)
- Dinette Base Cabinet w/Free Standing Chairs (37R, 39F)
- 2 Galley Pull-Outs (39F)
- Filp-up Top (37R, 38K)

## GALLEY

- Dishwasher
- Galley Faucet w/Pullout Sprayer
- Polished Solid Surface Countertop w/Sink Covers
- Tile Backsplash
- Under-Galley Shelving & Wastebasket
- Window Over Sink (38K, 39F, 39G)



## BEDROOM

- 32" LED HDTV (37R, 38K, 39G)
- 43" LED HDTV (39F)
- Bedsprad w/Decorative Pillows
- King Bed (37R, 39F, 39G)
- King Exclusive Dream Easy Series w/Adjustable Head Section (38K)
- Rear Wardrobe w/Cedar Lining, Carpet Floor & Wire Organizer (37R, 39F, 39G)
- Dual Rear Wardrobe w/Cedar Lining, Hinging Rods (38K)
- Remote Generator Start Switch
- Slide-out Features Overhead Cabinet
- Stackable Washer & Dryer
- Wardrobe Lighting

## BATHROOM

- A/C Venting
- Cabinets Toe Kicks
- Glass Shower Door
- Hardwood Bath Door/Trim
- LED Lighting Over Sink
- Molded Grani-Coat Shower Enclosure w/Skylight & Lower Threshold
- Porcelain Toilet w/Water Saver (37R, 38K, 39G)
- Porcelain Vacuum Flush Toilet (38K, 39F)
- Tile Backsplash
- Lavy Shelf in Rear Bath

## EXTERIOR THROUGHOUT

- 120V/12 AC/DC Converter
- 2800-Watt Pure Sine Wave Inverter w/Remote
- 4-Point Automatic Levelers
- 2nd Roof A/C
- 3rd Roof A/C (39G)
- 50-Amp Service
- 8.0 KW Onan Quiet Diesel Generator
- Aluminum Bus-Style Side Swing Luggage Doors
- Aluminum Extruded slide Ramps
- AM/FM/DVD Sound System
- Power Awnings w/LED Light Strip & Wind Sensor React
- Clear Protective Front Mask
- Roadside DEF Tank
- Dryseal Edge Coating (Water-Wicking Wall Edge Coating)
- Exterior Entertainment Center w/32" LED HDTV and High Output, Splash proof
- Fiberglass Front Quarter Panels
- Fiberglass Front/Rear Caps w/High Mounted Taillights
- Fiberglass Wheel Well Trims
- Five-Point Built System
- Frameless Flush Mount Windows
- Full-Body Paint
- Heat Pump in Rear A/C
- Manual Generator Slide
- Molded Fiberglass Roof
- Power Water Hose Reel



## EXTERIOR THROUGHOUT

- Rear Ladder (37R, 38K, 39G)
- Rear Rockguard
- Remote Keyless Entry
- Seamless Beltline Trim
- Solar Electric Panel
- Tapered Slide-Out Box Tops & Debris Awnings
- Water Pump Switch (Multiple Locations)
- 1st Full Bay 37/90 Slide Trays
- 2nd Full Bay 39/54 Slide Trays (39F)
- Winegard In motion Satellite Dish
- Winegard Stationary Satellite Dish
- King Dome Satellite
- Undercarriage LED Lights
- Roof Vent Rain Covers

## AUTOMOTIVE

- Aluminum Wheels
- Color Rear & Side Vision Camera System
- Fog Lamps
- Large One-piece Bounded Windshield
- Mud Flaps
- Singel-Motor Windshield Wipers w/Wet Arm
- Underhood Utility Light

## BODY STRUCTURE

- Basement storage
- Full Pass Through Storage w/Slide Trays
- Heated Water & Holding Tank Compartments
- Power Bridge Chassis Construction
- Powerframes Precision Welded
- Aluminum Interlocking Frames
- Powerlock System (Interlocking Floors, Walls & Ceiling)
- Quiet Cool Duct A/C
- Radiused & Cambered Entry Door
- Rased Space Frame Foundation
- Solid Bead-Foam Engineered Fit Insulation
- Vacu-Bond Intergrated Walls
- Vacu-Bond Aluminum Framed
- Sidewalls, Roof and Floor Construction
- Full Coverage Heavy Duty Undercoating

## SAFETY/CONVENIENCE

- 20' Sewer Hose
- 4-Wheel ABS Brakes
- Automatic Hydraulic Leveling Jacks
- Automotive Safety Glass
- Daytime Running Lights
- Easy Sweep Flooring @ Entry Step
- Entry Door w/Screen door & Deadbolt Lock
- Six Lighted Entry Assist Handle
- Power Entry Step
- Rear, Front and Side Markers Lights (Select LED)
- Solid Surface Entry-Step w/LED Accent Lights
- Toilet Tank San-T-Flush System
- Tank Sensor Monitoring System
- Utility Compartment w/Exterior Shower

## STORAGE

- Continuous One-Piece Compartment Seals
- Lighted Compartments
- Pass-Through Storage

# DISCOVERY LXE

Fleetwood took its most luxurious Class A motorhome, the Discovery, and packed it with even more premium features to bring you the 2017 Discovery LXE. Featuring more horsepower than ever before, Discovery LXE's 380 HP engine will power your next adventure, while interiors that span 40' or more will create your favorite getaway. A 20' integrated roof-top Girard awning with wind sensor lets you expand your family room to the Great Outdoors.

## TOP FEATURES

- Power Bridge Chassis® on the Freightliner® XCM Series
- ISL9 8.9L 380HP & 1150 ft-lb Torque
- Firefly Integrations Electronic Control System
- High Gloss Solid Hardwood Cabinetry
- Induction Cooktop
- Polished Porcelain Tile Throughout
- Dishwasher
- Bose Soundbar w/Bluetooth Connectivity
- Residential Refrigerator
- 3<sup>RD</sup> Air Conditioner
- Power Water Hose Reel & Power Cord Reel
- 20' Power Girard Integrated Awning w/LED Light Strip & Wind Sensor React



The Discovery LXE 40G is shown in Monarch Bronze décor and High Gloss Nottingham Cherry cabinetry.

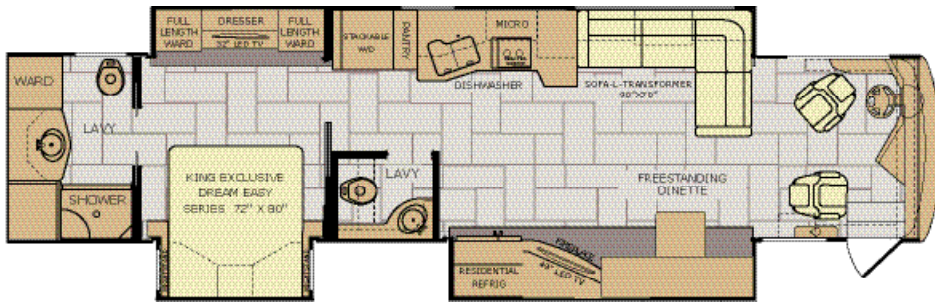




# DISCOVERY LXE EXTERIORS CHOICES & FLOORPLANS

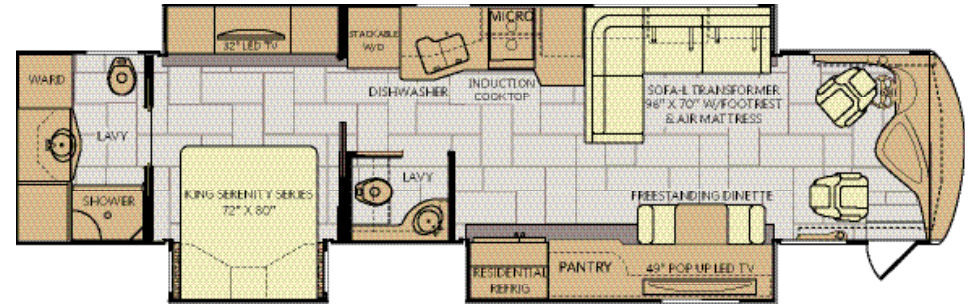
40D

Options: 087, 203, 209



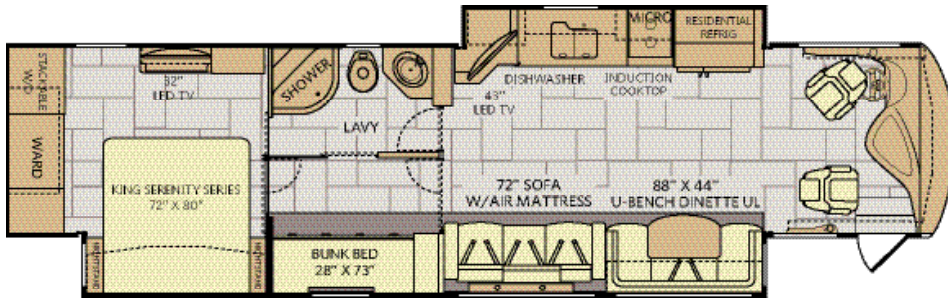
40E

Options: 087



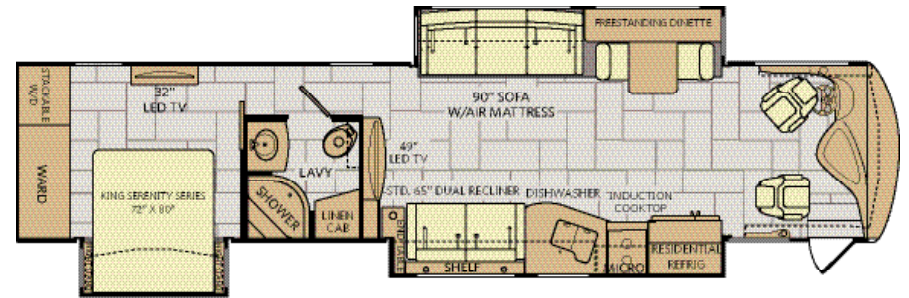
40G

Options: 087, 833



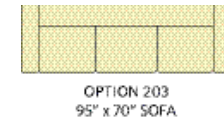
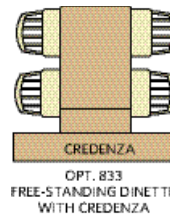
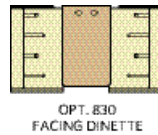
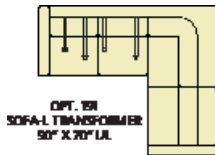
40X

Options: 087, 191, 830



Available Options

OPT. 087  
FRONT 32"  
LED TV



Champagne Valley

Iron Gray

Midnight Mokka

Paradise Blue





# DISCOVERY LXE STANDARDS & OPTIONS

## INTERIOR THROUGHOUT

- 20,000/25,000 BTU/ H Dual Furnaces (40G)
- 20,000/30,000 BTU/ H Dual Furnaces (40X)
- 25,000/30,000 BTU/ H Dual Furnaces (40E, 40D)
- 84" Interior ceiling Height
- Auto Generator Start
- Central Vacuum System
- Dedicated Full-Length, Metallic A/C Ducting
- 3 Roof-Mounted, High Efficiency A/C w/Solar Panel & Bedroom Heat Pump (40G, 40X)
- 3 Roof-Mounted, High Efficiency A/C w/Solar Panel & Bedroom/Living Heat Pump (40D, 40E)
- Fan-Tastic Power Roof Vent w/Wall Switch
- Firefly Integrations Electronic Control System
- Flat Interior Ceiling
- Tuff-Pex Plumbing System
- Demand Water Pump w/Filter
- Whole-Coach Water Filtration System
- Deluxe Roller Bearing, Full-Extension Drawer Guides & Transit-ship Locks
- High Gloss Hardwood Cabinet Face Frames, Doors & Drawers
- High Gloss Hardwood Crown Molding
- High Gloss Hardwood Finish Return Air Intake for Furnace
- Manual Day/Night Double Roller Shades
- Satellite Radio (Subscription Required)
- Polished Solid Surface Countertop
- Tile Flooring Throughout
- Passenger Console w/Integrated Magazine Rack
- Power Passenger Chair w/Footrest
- Truma - Tank less Water Heater

### OPTIONS

- CSA Package (Canadian Specs)\*\*

## DRIVER CONVENIENCE

- (2) 12V Power Outlet at Dash
- 110V Power Outlet at Dash & Passenger Area
- USB Charger (Driver Side)
- Automotive Warp-Around Dash
- Driver Left-Console w/Lower Storage Bin
- 3-Point Seatbelts at Driver & Front Passenger Seat (w/Adjustable Shoulder Straps)
- Auxiliary Start Circuit Switch
- Battery Disconnect System
- Cruise Control
- Denso High-Output Auto A/C Heater Combo
- Dual Dash Monitors
- Easy- Access Battery Disconnect Switch
- Front Power Roller Shades/Blinds
- Manual Driver & Passenger Roller Shade/Blinds
- Power Entry Step Cover
- Radio Switch Main/Auxiliary Power
- Remote Heated Chrome Power Exterior Mirrors w/Turn Signal & Shoulder Cameras
- Smart Steering Wheel w/Tilt & Telescoping
- Touch Screen Radio w/Built-in GPS
- Villa Driver/Passenger Soft-touch Captain's Chairs w/Reclining Back & 6-Way Power controls

## LIVING ROOM

- 43" LED HDTV (40G)
- 49" LED HDTV (40D, 40X)
- 49" Pop-Up TV LIFT (40E)
- TV Antenna w/Signal Booster
- BOSE Sound bar & Blu-Ray DVD Player
- Wall to Wall High Gloss Tile Flooring
- U-Shape Dinette (40G)
- Facing Dinette w/Credenza (40D, 40E, 40X)
- Expandable L-Sofa w/Air Mattress/ Footrest 40E)
- Expandable L-Sofa w/Jack-Knife/ Footrest (40D)
- Sofa w/Dual Footrest (40X)
- Sofa w/Air Mattress (Queen) (40G, 40X)

### OPTIONS

- 32" LED HDTV In Front Overhead
- Expandable L-Sofa w/Jack-Knife (40X)
- Sofa w/Air Mattress (Queen) (40D)
- L-Shape Dinette (40D)
- Booth Facing Dinette (40X)
- Facing Dinette w/Credenza (40G)

## GALLEY

- 22 cu ft. Residential Refrigerator w/ Two Additional Batteries & 2800 Watt Inverter
- Induction Cooktop
- Adjustable Cabinet Shelf (Select Cabinets)
- Dinette Base Cabinet w/Free-Standing Chairs (40D, 40E, 40X)
- Dishwasher
- Galley Faucet w/Pullout Sprayer
- Polished Solid Surface Countertop w/ Sink Covers
- Polished Solid Surface Shelf
- Tile Backsplash
- Under-Galley Shelving & Wastebasket
- Window Over Sink

## BEDROOM

- 32" LED HDTV
- Bedspread w/Decorative Pillows
- King Bed (40G, 40X)
- King Exclusive Dream Easy Series w/ Adjustable Head Section (40D, 40E)
- Rear Wardrobe w/Cedar Lining, Carpet Floor & Wire Organizer (40G, 40X)
- Dual Rear Wardrobe w/Cedar Lining, Hinging Rods (40D, 40E)
- Remote Generator Start Switch
- Slide-out Features Overhead Cabinet
- Stackable Washer & Dryer
- Wardrobe Lighting

## BATHROOM

- A/C Venting
- Cabinets Toe Kicks
- Glass Shower Door
- Hardwood Bath Door/Trim
- LED Lighting Over Sink
- Molded Grani-Coat Shower Enclosure w/Skylight & Lower Threshold
- Porcelain Toilet w/Water Saver
- Porcelain Vacuum Flush Toilet (40D, 40E)
- Solid Surface Shelf in Rear Bath (40E)
- Tile Backsplash

## SAFETY/CONVENIENCE

- 30" Wide Entry Door
- Carbon Monoxide Detector/Alarm
- Central Electrical Panel
- Energy Management System (EMS) w/Soft Start
- Fire Extinguisher
- Multiple Seatbelt Locations
- Neutral Loss Protection
- Propane Detector/Alarm
- Smoke Detector/Alarm

## EXTERIOR THROUGHOUT

- 120V/12 AC/DC Converter
- 2800-Watt Pure Sine Wave Inverter w/Remote
- 4-Point Automatic Levelers
- 3rd Roof A/C
- 50-Amp Service
- 8.0 KW Onan Quiet Diesel Generator
- Aluminum Bus-Style Side Swing Luggage Doors
- Aluminum Extruded slide Ramps
- AM/FM/DVD Sound System
- Power Awning w/LED Light Strip & Wind Sensor React
- Clear Protective Front Mask
- Roadside DEF Tank
- Dryseal Edge Coating (Water-Wicking Wall Edge Coating)
- Exterior Entertainment Center w/32" LED HDTV and High Output, Splash Proof
- Fiberglass Front Quarter Panels
- Fiberglass Front/Rear Caps w/High Mounted Taillights
- Fiberglass Wheel Well Trims
- Five-Point Built System
- Frameless Flush Mount Windows
- Full-Body Paint
- Heat Pump in Rear A/C (40D, 40G, 40X)
- Heat Pump in A/C Front & Rear A/C (40E)
- Manual Generator Slide
- Molded Fiberglass Roof
- Power Water Hose Reel
- Rear Ladder
- Rear Rockguard
- Remote Keyless Entry
- Seamless Beltline Trim
- Solar Electric Panel
- Tapered Slide-Out Box Tops & Debris Awning
- Water Pump Switch (Multiple Locations)

### OPTIONS

- 1st Full Bay 36"/54" Slide Trays (40G, 40X)
- 1st Full Bay 54" Slide Trays (40D, 40E)
- 1st Full Bay 90" Slide Tray (40G, 40X)
- 2nd Full Bay 54" Slide Trays
- King Dome Satelite
- Undercarriage LED Lights
- Window Awning Package
- Winegard In Motion Satellite Dish
- Winegard Stationary Satellite Dish

## AUTOMOTIVE

- Aluminum Wheels
- Color Rear & Side Vision Camera System
- Fog Lamps
- Large One-Piece Bonded Windshield
- Mud Flaps
- Single-Motor Windshield Wipers w/Wet Arm
- Underhood Utility Light



Images shown are from Discovery LXE 40G.

## BODY STRUCTURE

- Basement Storage
- Full Pass Through Storage w/Slide Trays
- Heated Water & Holding Tank Compartments
- Power Bridge Chassis Construction
- Powerframes Precision Welded Aluminum Interlocking Frames
- Powerlock System (Interlocking Floors, Walls & Ceiling)
- Quite Cool Duct A/C
- Radiused & Cambered Entry Door
- Rased Space Frame Foundation
- Solid Bead-Foam Engineered Fit Insulation
- Vacu-Bond Intergrated Walls
- Vacu-Bond Aluminum Framed Sidewalls, Roof and Floor Construction
- Full Coverage Heavy Duty Undercoating

## SAFETY/CONVENIENCE

- 20' Sewer Hose
- 4-Wheel ABS Brakes
- Automatic Hydraulic Leveling Jacks
- Automotive Safety Glass
- Daytime Running Lights
- Easy Sweep Flooring at Entry Step
- Entry Door w/Screen Door & Deadbolt Lock
- Six 6V/Deep-Cycle House Batteries
- Lighted Entry Assist Handle
- Power Entry Step
- Rear, Front and Side Marker Lights (Select LED)
- Solid-Surface Entry-Step w/LED Accent Lights
- Toilet Tank San-T-Flush™ System
- Touch Sensor Tank Monitoring System
- Utility Compartment w/Exterior Shower

## STORAGE

- Continuous One-Piece Compartment Seals
- Lighted Compartments
- Pass-Through Storage

# DÉCOR CHOICES

1 | Sofa 2 | Accent 3 | Bedspread 4 | Countertop 5 | Flooring 6 | Carpet

High Gloss  
Autumn Wheat



High Gloss  
Nottingham Cherry



## Celestial Reflection



## Monarch Bronze



## Time Square





# WEIGHTS & MEASUREMENTS

## CHASSIS

MODEL	DISCOVERY				DISCOVERY LXE			
	37R	38K	39F	39G	40D	40E	40G	40X
Wheelbase (inches)	245"	252"	263"	276"	276"	276"	276"	276"
GWVR (lbs) <sup>1</sup>	36,400	36,400	36,400	36,400	36,400	36,400	36,400	36,400
Front GAWR (lbs) <sup>2</sup>	12,400	12,400	12,400	12,400	12,400	12,400	12,400	12,400
Rear GAWR (lbs) <sup>2</sup>	24,000	24,000	24,000	24,000	24,000	24,000	24,000	24,000
GCWR (lbs) <sup>3</sup>	46,400	46,400	46,400	46,400	46,400	46,400	46,400	46,400
Hitch Rating Weight (lbs) <sup>†</sup>	10,000	10,000	10,000	10,000	10,000	10,000	10,000	10,000
Tongue Weight (lbs) <sup>†</sup>	1,000	1,000	1,000	1,000	1,000	1,000	1,000	1,000
Fuel Capacity (gal)	100	100	100	100	100	100	100	100

### POWER BRIDGE® CHASSIS 360HP - DISCOVERY

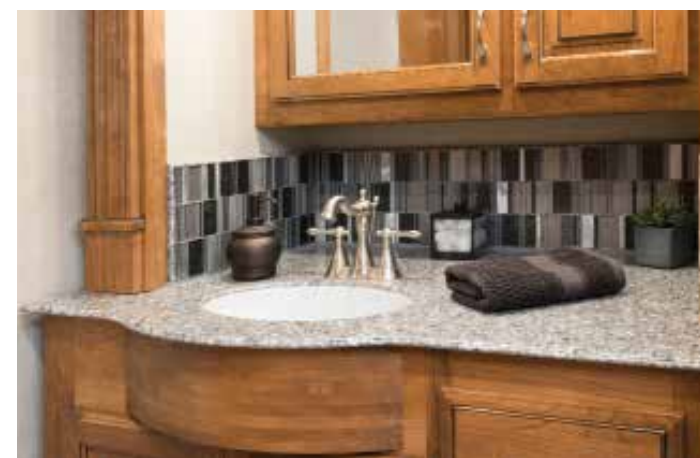
Model: Freightliner® XCM Series  
 Engine: Cummins® ISB 6.7L  
 Transmission: Allison® 3000 MH 6-Speed w/Electronic Shifter  
 Alternator: Delco Remy 160 Amp  
 Torque: 800 lb.-ft. @ 1,800 RPM  
 Horsepower: 360 HP

### 380HP - DISCOVERY LXE

Model: Freightliner® XCM Series  
 Engine: Cummins® ISL9  
 Transmission: Allison® 3000 MH 6-Speed w/Electronic Shifter  
 Alternator: Delco Remy 160 Amp  
 Torque: 1,150 lb.-ft. @ 1,400 RPM  
 Horsepower: 380 HP

## DIMENSIONS & CAPACITIES DISCOVERY

MODEL	DISCOVERY				DISCOVERY LXE			
	37R	38K	39F	39G	40D	40E	40G	40X
Overall Length (inches) <sup>4</sup>	38' 8"	38' 8"	40' 1"	41' 4"	41' 4"	41' 4"	41' 4"	41' 4"
Overall Height (suspension inflated)	12' 10"	12' 10"	12' 10"	12' 10"	12' 10"	12' 10"	12' 10"	12' 10"
Overall Width (maximum) <sup>5, 6</sup>	102"	102"	102"	102"	102"	102"	102"	102"
Interior Height (maximum)	84"	84"	84"	84"	84"	84"	84"	84"
Interior Width (maximum)	96"	96"	96"	96"	96"	96"	96"	96"
Patio Awning Width	14'	10' 8"	19' 6"	19' 6"	20'	20'	20'	20'
Interior Storage (cu. ft.)	197	166	197	197	197	197	166	197
Exterior Storage (cu. ft.)	208	208	208	208	208	208	208	208
Fresh Water Holding Tank (gal)	100	100	100	100	100	100	100	100
Grey Water Holding Tank (gal)	75	75	75	75	75	75	75	75
Black Water Holding Tank (gal)	50	50	50	50	50	50	50	50
Appliance Propane Tank (gal) (WC) <sup>7</sup>	38.7	38.7	38.7	38.7	38.7	38.7	38.7	38.7



Images shown are from the Discovery 37R.

## DISCLAIMERS

1. GVWR (Gross Vehicle Weight Rating) is the maximum permissible weight of this fully loaded motor home. The GVWR is equal to or greater than the sum of the (UVW) unloaded vehicle weight plus the (OCCC) occupant cargo-carrying capacity.
  2. GAWR (Gross Axle Weight Rating) is the maximum permissible loaded weight a specific axle is designed to carry.
  3. GCWR (Gross Combined Weight Rating) is the value specified by the motor home manufacturer as the maximum allowable loaded weight of this motor home with its towed vehicle. Towing and braking capacities may be different. Refer to Fleetwood and chassis manufacturer's manuals for complete information.
  4. Length measured from front bumper to rear bumper (excludes accessories).
  5. Excludes safety equipment and awnings.
  6. Motor homes feature a body width over 96" which will restrict your access to certain roads. Before purchasing, you should research any state and/or province road laws which may affect your usage.
  7. Tank manufacturer's listed water capacity (WC). Actual propane capacity is 80% of water listing as required by the safety code.
- † The chassis manufacturer recommends the installation of a supplemental brake control system to activate the brakes on the vehicle or trailer you are towing. Hitch receiver ratings expressed are maximum for the hitch receiver installed and may require the purchase of additional equipment that is dependent on the weight of the towed load. Consult with hitch receiver manufacturer for further information.
- \* UVW and OCCC are found on the label containing the federal certification tag in each RV.

\*\* All 2017 REV Recreation Group motorhomes include a limited one year/15,000-mile coach warranty and three-year/45,000-mile structural warranty, whichever occurs first, and is fully transferable for the first 12 months.

## FLEETWOOD MOTORHOME ASSOCIATION

As a Fleetwood RV owner, you're invited to become a member of the Fleetwood Motorhome Association (FMA). Becoming a member is the perfect way to meet other Fleetwood owners who love to travel across America and share in the RV lifestyle. Visit the FMA website at [www.fma4fun.org](http://www.fma4fun.org) to learn more and join the fun.

## CONTACT US

To locate a dealer near you, visit our website at [www.fleetwoodrv.com](http://www.fleetwoodrv.com) or call 1-800-322-8216. We can also be contacted at Fleetwood RV Customer Relations, P.O. Box 1007, Decatur, IN 46733.

**IMPORTANT—PLEASE READ:** Product information, photography and illustrations included in this publication were as accurate as possible at the time of printing. For further product information and changes, please visit our website at [www.fleetwoodrv.com](http://www.fleetwoodrv.com) or contact your local Fleetwood RV dealer. Prices, materials, design and specifications are subject to change without notice. All weights, fuel, liquid capacities and dimensions are approximate. Fleetwood RV has designed its recreational vehicles to provide a variety of uses for its customers. Each vehicle features optimal seating, sleeping, storage and fluid capacities. The user is responsible for selecting the proper combination of loads (i.e., occupants, equipment, fluids, cargo, etc.) to ensure that the vehicle's capacities are not exceeded.



*America's favorite motorhomes.*

YOUR LOCAL DEALER