

**GEORGETOWN**  
BY FOREST RIVER

# GT

BY FOREST RIVER



**GT<sub>3</sub>**

**GT<sub>5</sub>**

**GT<sub>7</sub>**

## Construction Layers

### MULTI-LAYERED LAMINATED ROOF SYSTEM

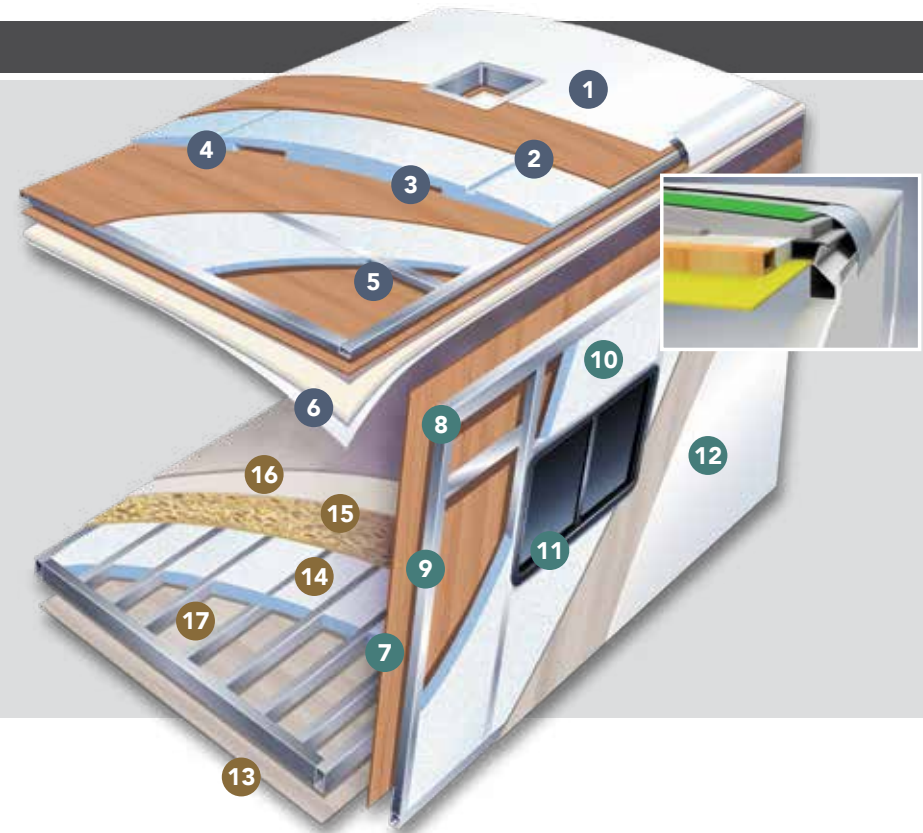
1. Crowned Exterior Fiberglass Roof (Flat Interior Ceiling)
2. 1/4" Decking
3. Block Foam Insulation
4. A/C Ducts
5. Tubular Aluminum Framing
6. Interior Hard Pan Vinyl

### VACUUM-BOND LAMINATED SIDEWALLS

7. Decorative Interior Wall Board
8. Tubular Aluminum Framing
9. EGS Metal Backers Increase Support for Interior Cabinetry
10. Block Foam Insulation
11. Openings Framed in Aluminum
12. Gelcoat Fiberglass Exterior

### VACUUM-BOND LAMINATED FLOOR SYSTEM

13. Darco Barrier
14. Block Foam Insulation
15. Floor Decking
16. Linoleum Flooring Throughout Entire Coach
17. 1" Aluminum Framing



# GT3

A great staycation within the Georgetown series. The GT3 shows off its classy fit and finish with the features Georgetown is recognized for and the floor plans that will suit a small or larger family at a valued price point.



## GT3 Key Features

- Atwood A/C's
- 360 Plus Winegard WIFI
- 115 Watt Merlin Solar Panel
- P2K Bunk System
- Arctic Package
- 5500 Watt NPS Yamaha Generator
- Hydraulic Jacks
- Sony In-Dash Touchscreen Radio
- Computer Workstation
- Morryde 1.5 Tubular Steel Chassis Up-Fit
- Heat Pump

## GT3 Technical Specifications

	CHASSIS	ENGINE	HORSE POWER	TORQUE LB/FT	WHEEL BASE	FUEL TANK	GVWR	GCWR	GAWR FRONT	GAWR REAR	FRESH WATER	GRAY WATER	BLACK WATER	LENGTH	EXT. WIDTH	EXT. HEIGHT	AWNING LENGTH
<b>32A3</b>	Ford F53	7.3L V8	350	468	228"	80 gal	22,000 lbs	26,000 lbs	8,000 lbs	15,000 lbs	52 gal	42 gal	42 gal	34' 7"	100"	12' 9"	17'
<b>33B3</b>	Ford F53	7.3L V8	350	468	228"	80 gal	22,000 lbs	26,000 lbs	8,000 lbs	15,000 lbs	52 gal	42 gal	42 gal	34' 6"	100"	12' 9"	12'

NOTE: Technical Specification definitions on page 4.

## GT3 Popular Options

- Power Theater Seats

# GT5

The sharp, sporty look of this coach will have heads turning. With more standard features in its class, the GT5 offers six exterior options and two interior decors for a truly unique look that will give your friends and family something to talk about.



Also available in Charcoal Partial Paint



34H5



34M5

## GT5 Key Features

- Atwood A/C's
- 360 Plus Winegard WIFI
- 115 Watt Merlin Solar Panel
- P2K Bunk System
- Arctic Package
- 5500 Watt NPS Yamaha Generator
- Hydraulic Jacks
- Sony In-Dash Touchscreen Radio
- Computer Workstation
- Morryde 1.5 Tubular Steel Chassis Up-Fit
- Dream Dinette
- Precision Circuits Control System
- Power Theater Seating w/Heat & Massage (Optional in 36B)
- Heat Pump
- Auto Generator Start
- One Piece Fiberglass Shower



34H5 WITH STONE INTERIOR



36B5 WITH BAMBOO INTERIOR



34H5 WITH STONE INTERIOR



34H5 WITH STONE INTERIOR

## GT5 Technical Specifications

	CHASSIS	ENGINE	HORSE POWER	TORQUE LB/FT	WHEEL BASE	FUEL TANK	GVWR	GCWR	GAWR FRONT	GAWR REAR	FRESH WATER	GRAY WATER	BLACK WATER	LENGTH	EXT. WIDTH	EXT. HEIGHT	AWNING LENGTH
<b>31L5</b>	Ford F53	7.3L V8	350	468	228"	80 gal	22,000 lbs	26,000 lbs	8,000 lbs	15,000 lbs	82 gal	42 gal	42 gal	34' 11"	100"	12' 9"	19'
<b>34H5</b>	Ford F53	7.3L V8	350	468	242"	80 gal	22,000 lbs	26,000 lbs	8,000 lbs	15,000 lbs	82 gal	52 gal	52 gal	37' 10"	100"	12' 9"	17' & 12'
<b>34M5</b>	Ford F53	7.3L V8	350	468	242"	80 gal	22,000 lbs	26,000 lbs	8,000 lbs	15,000 lbs	82 gal	52 gal	52 gal	37' 11"	100"	12' 9"	18'
<b>36B5</b>	Ford F53	7.3L V8	350	468	242"	80 gal	22,000 lbs	26,000 lbs	8,000 lbs	15,000 lbs	82 gal	84 gal	84 gal	37' 11"	100"	12' 9"	12' 6"

NOTE: Technical Specification definitions on page 4.

## GT5 Popular Options

- Full Body Paints
- Washer/Dryer Combo
- 7.0 KW Onan Generator
- Dual Pane Windows



# GT7

While exploring new destinations, you will experience the true richness of the GT7. From the high-end hand crafted true wood cabinetry that shows a glamorous fit and finish, to the three eye-catching full body paints. GT7, where luxury is not an option!



## GT7 Key Features

- Atwood A/C's
- 360 Plus Winegard WIFI
- 115 Watt Merlin Solar Panel
- P2K Bunk System
- Arctic Package
- Hydraulic Jacks
- Sony In-Dash Touchscreen Radio
- Computer Workstation
- Morryde 1.5 Tubular Steel Chassis Up-Fit
- Dream Dinette
- Precision Circuits Control System
- Power Theater Seating
- Residential Stainless Steel Appliance Package
- Designer Cabinetry
- Tilt-A-Bed
- 2,000 Magnum Inverter/Converter
- 7.0 KW Onan Generator
- Four House Batteries
- Solid Surface Countertops



36D7 WITH CHESTNUT INTERIOR



36K7 WITH PEARL INTERIOR



36K7 WITH PEARL INTERIOR

## GT7 Popular Options

- Full Body Paints
- Stackable Washer/Dryer
- Rear Mud Flap
- 18 CU FT Norcold Refrigerator
- Dual Pane Windows

## GT7 Technical Specifications

	CHASSIS	ENGINE	HORSE POWER	TORQUE LB/FT	WHEEL BASE	FUEL TANK	GVWR	GCWR	GAWR FRONT	GAWR REAR	FRESH WATER	GRAY WATER	BLACK WATER	LENGTH	EXT. WIDTH	EXT. HEIGHT	AWNING LENGTH
<b>32J7</b>	Ford F53	7.3L V8	350	468	228"	80 gal	22,000 lbs	26,000 lbs	8,000 lbs	15,000 lbs	72 gal	52 gal	52 gal	35' 0"	102"	12' 11"	19'
<b>36D7</b>	Ford F53	7.3L V8	350	468	252"	80 gal	24,000 lbs	30,000 lbs	9,000 lbs	15,500 lbs	85 gal	52 gal	52 gal	37' 11"	100"	12' 11"	20'
<b>36K7</b>	Ford F53	7.3L V8	350	468	252"	80 gal	24,000 lbs	30,000 lbs	9,000 lbs	15,500 lbs	85 gal	52 gal	52 gal	40' 1"	100"	12' 11"	18'

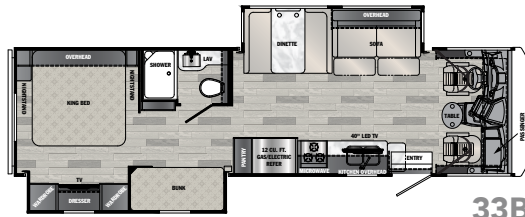
NOTE: Technical Specification definitions on page 4.

# FLOORPLANS

## GT3

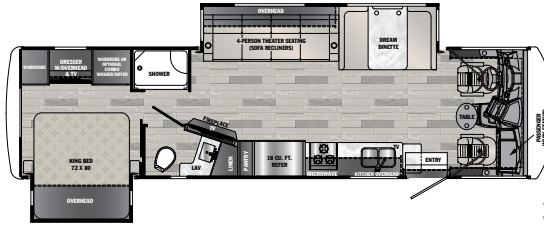


32A3

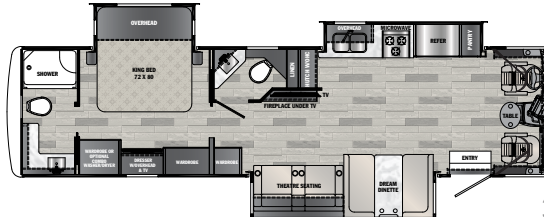


33B3

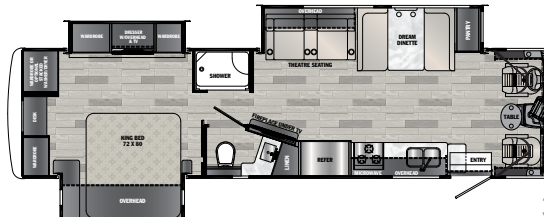
## GT5



31L5



34H5

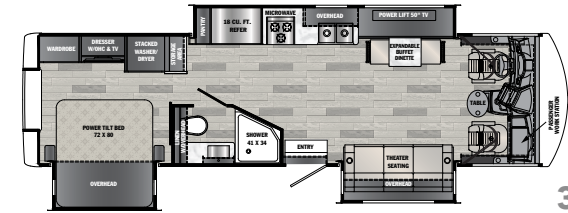


34M5

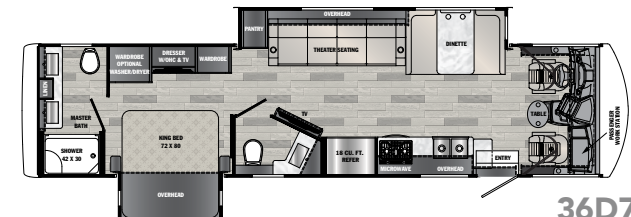


36B5

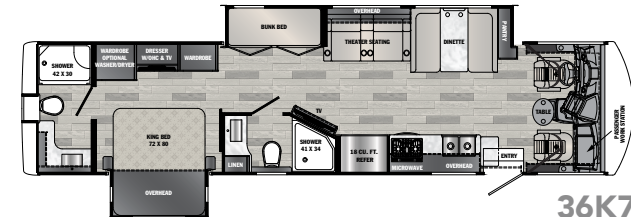
## GT7



32J7



36D7



36K7

## SPECIFICATION DEFINITIONS

**GVWR (Gross Vehicle Weight Rating)** is the maximum permissible weight of the unit when fully loaded. It includes all weights, inclusive of all fluids, occupants, cargo, optional equipment and accessories. For safety and product performance do NOT exceed the GVWR.

**GCWR (Gross Combined Weight Rating)** is the maximum permissible loaded weight of your motor home and any towed trailer or towed vehicle. Actual GCWR of this vehicle may be limited by the sum of the GVWR and the installed hitch receiver maximum capacity rating; see hitch rating label for detail.

**GAWR (Gross Axle Weight Rating)** is the maximum permissible weight, including cargo, fluids, optional equipment and accessories that can be safely supported by each axle.

**UVW (Unloaded Vehicle Weight)\*** is the typical weight of the unit as manufactured at the factory. It includes all weight at the unit's axle(s), including full fuel, all fluids and LP Gas. The UVW does not include cargo, fresh potable water, additional optional equipment or dealer installed accessories.

\*Estimated Average based on standard build optional equipment.

**CCC (Cargo Carrying Capacity)\*\*** is the amount of weight available for fresh potable water, cargo, passengers, additional optional equipment and accessories. CCC is equal to GVWR minus UVW. Available CCC should accommodate fresh potable water (8.3 lbs per gallon). Before filling the fresh water tank, empty the black and gray tanks to provide for more cargo capacity.

\*\* Estimated average based on standard build optional equipment

Each Forest River RV is weighed at the manufacturing facility prior to shipping. A label identifying the unloaded vehicle weight of the actual unit and the cargo carrying capacity is applied to every Forest River RV prior to leaving our facilities.

The load capacity of your unit is designated by weight, not by volume, so you cannot necessarily use all available space when loading your unit.

Actual towing capacity is dependent upon your particular loading and towing circumstances, which includes the GVWR, GAWR and GCWR as well as adequate trailer brakes. Please refer to the Operator's Manual of your vehicle for further towing information.



# GEORGETOWN

BY FOREST RIVER

## Full Body Paint Packages

### GT5



Graphite

Admiral

Ruby

Cobalt

### GT7



Sapphire

Carbon

Eclipse

#### 24/7 EMERGENCY ROADSIDE ASSISTANCE WITH VEHICLE PURCHASE\*

TOWING	WINCH-OUT
JUMP-STARTS	MOBILE MECHANIC
TIRE CHANGES	TECHNICAL
FLUID DELIVERY	SUPPORT
LOCKOUT	DEALER LOCATOR
SERVICE	SERVICES



\*VALID FOR 1 YEAR FROM DATE OF PURCHASE

**FREE MEMBERSHIP**  
to Forest River Owners' Group



[www.forestriverfrog.com](http://www.forestriverfrog.com)



F53 Class A motorhome chassis

#### YOUR GEORGETOWN DEALER

#### CUSTOMER SATISFACTION



[www.ForestRiverBuyLocal.com](http://www.ForestRiverBuyLocal.com)



Learn More  
Scan this barcode using  
a QR Reader on your  
smart phone to learn  
more about Forest River.



A Berkshire Hathaway company.

All information contained in this brochure is believed to be accurate at the time of publication. However, during the model year, it may be necessary to make revisions and Forest River, Inc., reserves the right to make all such changes without notice, including prices, colors, materials, equipment and specifications as well as the addition of new models and the discontinuance of models shown in this brochure. Therefore, please consult with your Forest River, Inc., dealer and confirm the existence of any materials, design or specifications that are material to your purchase decision. 05/21

©2021 Georgetown  
a Division of Forest River, Inc., a Berkshire Hathaway company. All Rights Reserved.

# GEORGETOWN

BY FOREST RIVER

Forest River, Inc.  
Georgetown Division  
902 County Road 1  
Elkhart, IN 46515

For more information, call **(574) 367.3300**.

To see more photos and the latest model standards and options, visit [www.forestriverinc.com/georgetown](http://www.forestriverinc.com/georgetown)